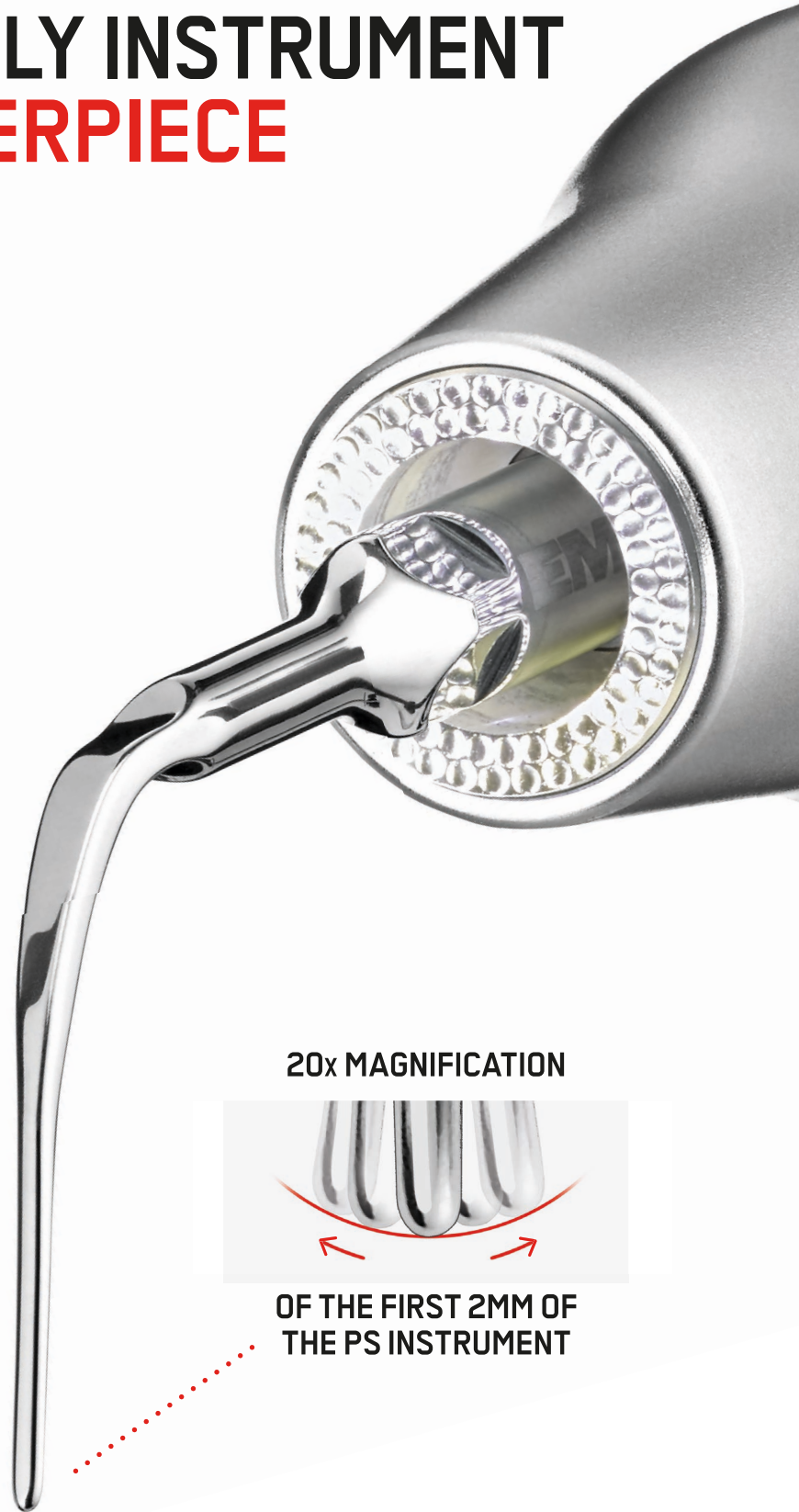


PIEZON® PS

THE ONE AND ONLY INSTRUMENT
A SWISS MASTERPIECE



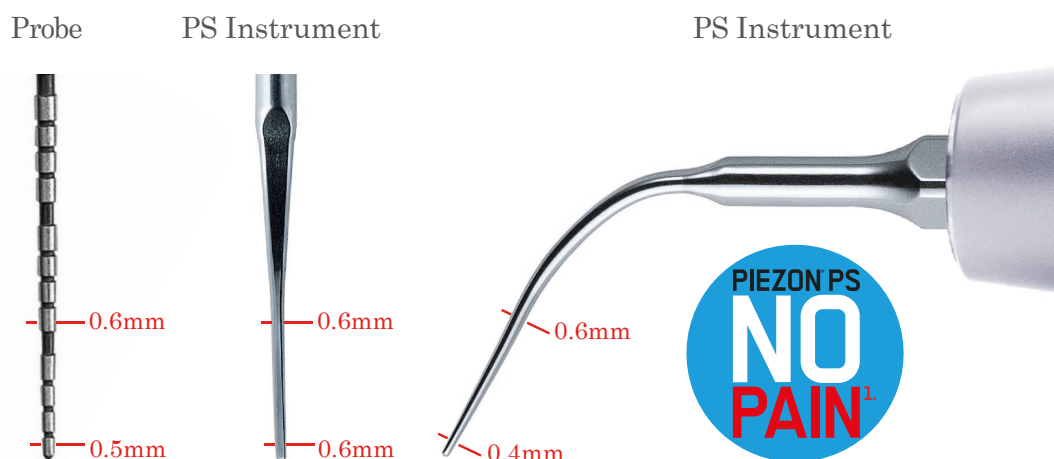
EMS 
MAKE ME SMILE.

THE ONE AND ONLY AND SCALING IS EASY

THE PIEZON® PS NO PAIN¹ INSTRUMENT WORKS PERFECTLY IN 95% OF ALL SITUATIONS.

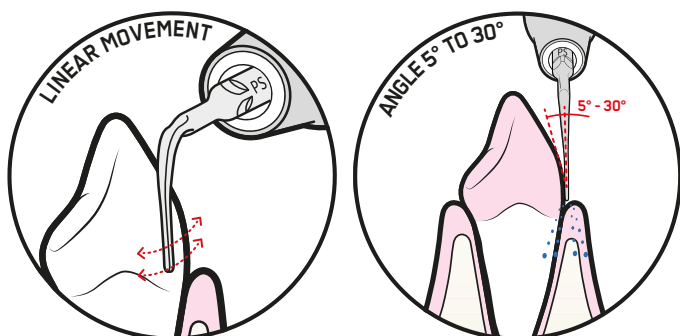
► Supra- & Subgingival scaling and Periodontal debridement - the EMS Perio Slim Instrument, is THE reference for Prevention and Prophylaxis. While others suggest several instruments for a full mouth debridement, EMS has developed the original PIEZON® PS NO PAIN¹ Instrument. The PS Instrument does it all !

Designed to be as slim and as smooth as a periodontal probe, the original PIEZON® PS NO PAIN¹ Instrument is gum-friendly, minimally invasive, maximally preventive, and preserves the epithelium thanks to its perfectly linear movements. To ensure NO PAIN¹ treatment use the first 1-2mm of the instrument.



Your clinical work becomes a lot easier by using only one instrument. Our specially developed PIEZON® PS Training Tool helps you to become a real PIEZON® PS Master. Also, the courses of our Swiss Dental Academy help you to improve your skills.

The PIEZON® PS NO PAIN¹ Instrument can be used sub- and supragingivally, in all quadrants, up to 10mm. The constant efficiency is guaranteed during all its lifetime: +1000 treatments. Its cleaning efficiency and extreme comfort for patients are scientifically proven.



**ACCESS THE
CLINICAL CLAIMS ON
PIEZON® PS INSTRUMENT**



PERFECT SWISS HARMONY

THE RESULT IS NO PAIN¹

► The original PIEZON® NO PAIN¹ system is composed of 3 elements: the PIEZON® PS NO PAIN¹ Instrument, the high-tech PIEZON® Handpiece and the modern NO PAIN¹ Electronic Software.



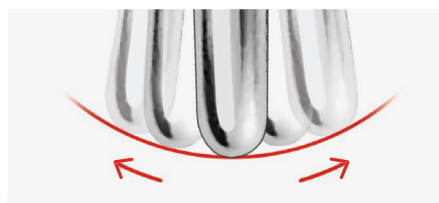
► The PIEZON® system technology was originally invented in Switzerland in 1981 by Pierre Mabile, co-founder of EMS and former owner of French company Satelec. It was redesigned with all the technical expertise from the Valley-de-Joux and in collaboration with Jaeger-LeCoultre (the famous watchmaker), as well as its exclusive suppliers.

► Since then, it has been constantly improved to guarantee the best treatment comfort and efficiency. It uses piezoceramics to convert the smart electronic signal of the NO PAIN¹ module into a mechanical vibrational motion. This activates the PIEZON® PS NO PAIN¹ Instrument in a perfectly linear motion.

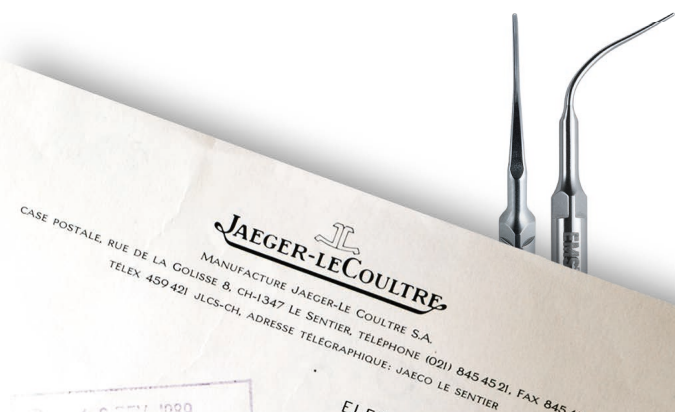
► The PIEZON® NO PAIN¹ feedback technology offers a high patient comfort. The handpiece intuitively registers the calculus by recognizing the higher resistance, the device then automatically increases the power at the tip to effectively remove the calculus.

► Only original EMS PIEZON® instruments and handpieces ensure that the PIEZON® power is used to its full extent, that the tooth anatomy is respected and a comfortable treatment is delivered to the patients.

20x MAGNIFICATION



OF THE FIRST 2MM OF THE PS INSTRUMENT



DISCOVER
THE LINEAR
MOVEMENT



OUR SOLUTIONS FOR ALL SITUATIONS

FOR SPECIAL SITUATIONS SUCH AS VERY HARD CALCULUS OR INTERPROXIMAL AREAS, EMS HAS DEVELOPED DEDICATED AND EFFICIENT INSTRUMENTS.



► The PIEZON® P Instrument is mainly used for the removal of stubborn, hard supragingival and subgingival (up to 4 mm) calculus and concretions in all quadrants. It is the latest evolution of the PIEZON® A Instrument, which is no longer available.

► The PIEZON® PSR and PSL Instruments are recommended for difficult-to-reach distal and mesial interproximal surfaces with superior efficacy and comfort, supragingival and subgingival, up to 8 mm. The PIEZON® PSR & PSL Instruments feature superior efficacy in heavy calculus removal compared to the PIEZON® PS NO PAIN¹ Instrument. They save time, especially during initial periodontal therapy, and are indicated for adult patients only.

► The PIEZON® PI Instrument features a tip coating made of high-tech PolyEther Ether Ketone (PEEK) that safely cleans the sensitive surfaces of implant abutments and restorations. It easily debrides plaque with surgical precision thanks to its linear movements and medical-grade stainless steel. It is ideal for minimally invasive implant maintenance and for maximum patient comfort.

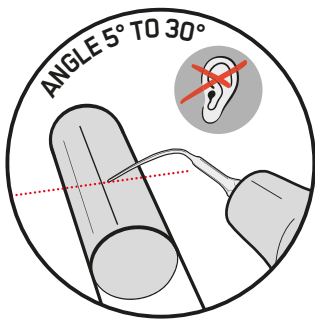
YOUR FAVORITE REFERENCES TO ORDER:

PIEZON PS INSTRUMENT	REF DS-016A
PIEZON P INSTRUMENT	REF DS-011A
PIEZON PSR + PSL INSTRUMENTS	REF FS-461
PIEZON PI INSTRUMENTS	REF DT-065A
FILE HOLDER 120°	REF DS-010A

YOU NEED TO PRACTICE TO BE A MASTER

► Practice your skills with the PIEZON® PS Training Tool! Nothing beats proper training and the application of recommended treatment methods in order to achieve the PIEZON® NO PAIN¹ effect.

► Always use the PIEZON® PS NO PAIN¹ Instrument on the side of the tooth with the first 1-2mm of the instrument to ensure NO PAIN¹ treatment.



► Proper device settings, angulation, adequate pressure and swift back-and-forth movements are key to deliver a minimally invasive and comfortable treatment.

► If you produce disturbing noises, you may be causing pain !

► If you make no noise, all is fine !

CORRECT SEQUENCE OF USAGE:

- 1. CORRECT SETTINGS** – Set your AFPM with NO PAIN¹ settings: minimum 70% of water and maximum 60% power.
- 2. ADAPTATION** – Hold the Original PIEZON® PS NO PAIN¹ Instrument parallel to the tube adapting the lateral side.
- 3. ANGULATION** – Angulate the instrument with a slight tangent (5° - 30°). Only the last 1-2 mm should be in contact with the artificial calculus.
- 4. PRESSURE** – Let the instrument work effortlessly, apply no pressure.
- 5. MOVEMENT** – Make small back-and-forth strokes along the tube. Feel the linear movement.

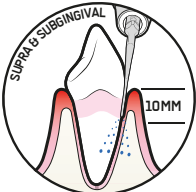
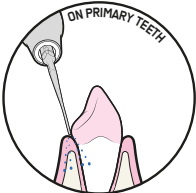
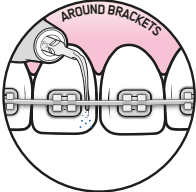
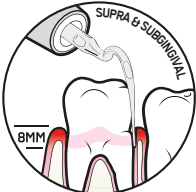
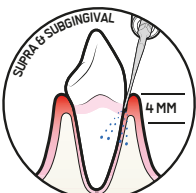
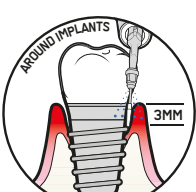
WATCH THE
VIDEO TO
LEARN ABOUT
THE OPTIMUM
USE OF THE
PIEZON® PS
INSTRUMENT



THE OPTIMAL NO PAIN¹ SETTINGS

RECOMMENDATIONS:

- ▶ Only use the lateral sides of the instrument, moving around the tooth.
- ▶ Only use the extremity of the instrument.
- ▶ The last 1-2 mm of the instrument is the most active part.

Instr.	Case	Recommended Power	Recommended Water	Suggestions	
	Supragingival	10% - 100%	70% to 100%	Start at low power and increase if needed.	
	Subgingival → 10mm	10% - 60%			
		Children			10% - 60%
	Orthodontics	10% - 60%			Do not touch the bracket in order to avoid scratches and bond weakening.
	PSL PSR Supra- and subgingival Approximal areas → 8mm	10% - 60%			Caution: this instrument is angled (left or right) and is more powerful than PS. Start at low power and increase if needed.
	P Heavy calculus Supragingival and subgingival → 4mm	10% - 60%			Start at low power and increase if needed.
	PI Implants Supra- and subgingival → 3mm	10% - 60%	Start at low power and increase if needed.		

CHECK YOUR PS INSTRUMENT

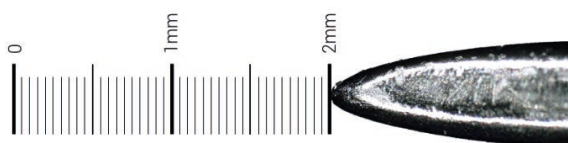


- ▶ Always check the wear of your PIEZON® PS NO PAIN¹ Instrument to ensure maximum comfort for your patients during treatment.
- ▶ You must change your PIEZON® PS Instrument if 2 mm of the tip are worn.
- ▶ By using an instrument that is worn, you will damage the handpiece's sonotrode and therefore will need to buy a new handpiece.

NEW



WHEN USED!



REPLACE!

CHECK IT
ORIGINAL EMS SWISS INSTRUMENTS

PIEZON LED

GUIDED
BIOFILM
THERAPY®

DS-011A P

DS-016A PS

**WARNING: AFTER 2 MM OF WEAR, DO NOT USE
YOUR PIEZON® PS INSTRUMENT ANY LONGER!!**

USE THE ORIGINAL ONLY NEVER BUY A COPY TIP

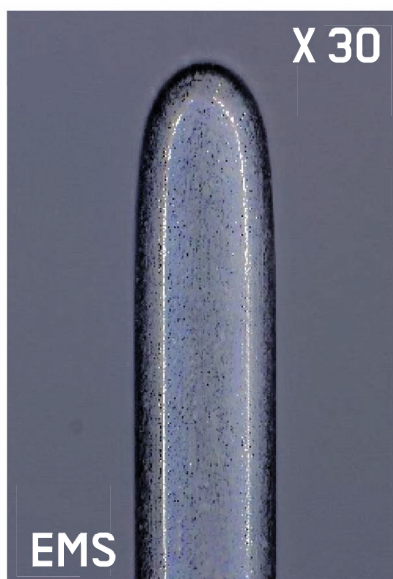
"COMPATIBLE" IS NOTHING MORE THAN A COPY!

► Cheap copies that claim to be “compatible” with EMS PIEZON® systems have been on the market for a long time. They put your treatments and your equipment at risk!

► "Compatible" tips cannot be compared to the original PIEZON® PS NO PAIN¹ Instrument from EMS. These copies do not correspond to any EMS quality standard and do not match the precision of EMS Micrometric Swiss Manufacturing. The result is a tip surface that does not even come close to the original PIEZON® PS NO PAIN¹ Instrument. Instead, they generate irregular movement.

► With the original PIEZON® PS NO PAIN¹ Instrument, nothing rotates, nothing oscillates in circles, ellipses, figures of eight or otherwise.

That also means that nothing bends affecting the tooth or the gum. No copy tip can match the original PIEZON® PS NO PAIN¹ Instrument.

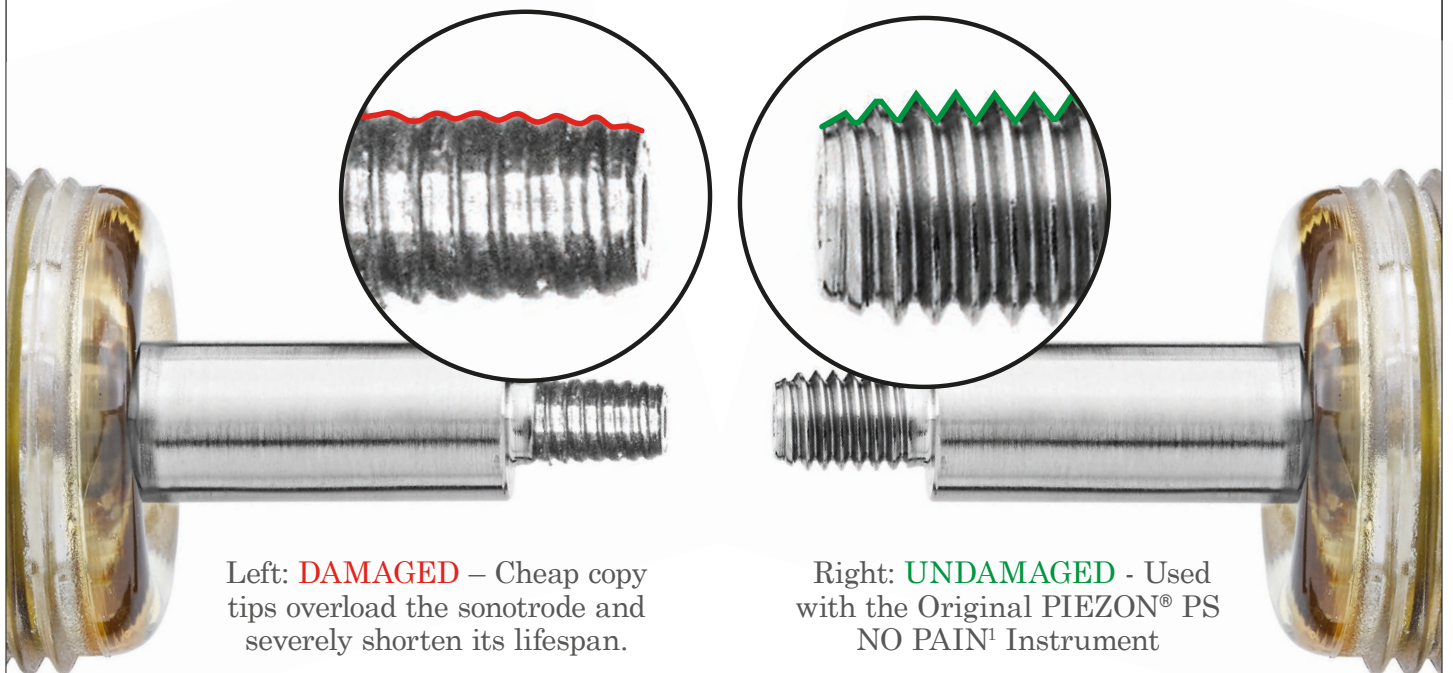


**THE PS INSTRUMENT'S SMOOTH SURFACE IS A KEY
PARAMETER IN THE PIEZON® NO PAIN¹ TRILOGY.
NO SIMILARLY-LOOKING TIPS OFFER THE SAME SURFACE CONDITION.**

A CHEAP COPY CAN DO A LOT OF DAMAGE

► Protect your equipment. Rely only on the original PIEZON® PS NO PAIN¹ Instrument and EMS original equipment. With so-called “compatible”, fake or copy tips, you risk ruining your premium EMS components as well.

Only the original EMS products are approved and guaranteed for use with EMS units to practice the revolutionary Guided Biofilm Therapy. Why buy worthless copy tips if one treatment with the original costs only 10 Cents?



Left: **DAMAGED** – Cheap copy tips overload the sonotrode and severely shorten its lifespan.

Right: **UNDAMAGED** - Used with the Original PIEZON® PS NO PAIN¹ Instrument

► Investing in Swiss quality pays off: While most copy tips can only perform 100 to 200 scaling treatments, the PIEZON® PS NO PAIN¹ Instrument lasts more than 1000 treatments, thus reducing the treatment cost to a few cents per patient. How much is your patient worth to you?

► The sonotrode of the Original PIEZON® Handpiece is made of premium titanium. This is not the case with cheap copies, they have the same effect as a thread cutter and damage the valuable handpiece: loss of warranty!

**PROTECT THE TEETH OF YOUR PATIENTS!
DO NOT TAKE RISKS WITH COPY TIPS!**

THE BIG MISTAKE OF BUYING CHEAP



BUYING CHEAP MAY TURN OUT TO BE VERY COSTLY

There is scarcely anything in the world
that some man cannot make a little worse
and sell a little more cheaply.

The person who buys on price alone
is this man's lawful prey.

It's unwise to pay too much,
but It's worse to pay too little.

When you pay too much,
you lose a little money - that is all.

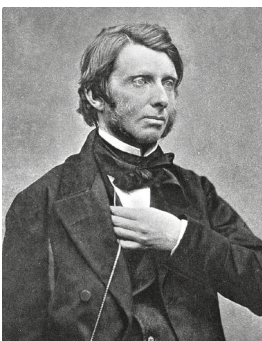
When you pay too little,
you sometimes lose everything,
because the thing you bought
was incapable of doing the thing
it was bought to do.

The common law of business balance prohibits
paying a little and getting a lot - it can't be done.

If you deal with the lowest bidder,
it is well to add something for the risk you run.

And if you do that you will have enough
to pay for something better.

John Ruskin (1819-1900)



ONLY BUY THE ORIGINALS!!

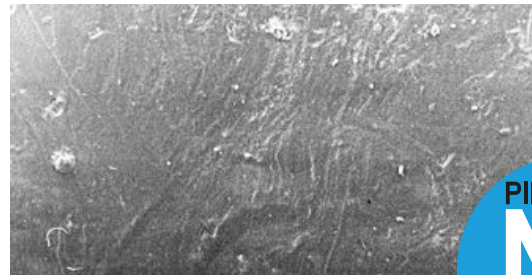
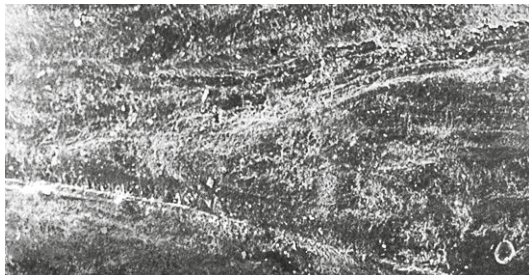
WELLNESS FOR PATIENTS, USE ORIGINALS ONLY!

PROTECT YOUR PATIENTS

► To perform a painless¹ treatment without damaging the tooth, rely only on the original PIEZON® PS NO PAIN¹ Instrument and AIRFLOW® PLUS Powder by EMS Switzerland. With so-called “compatible”, i.e. fake tips and powders or copies, you risk to ruin your patients’ teeth and gums.

► Only the original EMS products are approved and guaranteed for use in EMS units to practice the revolutionary Guided Biofilm Therapy.

► Low-cost copy instruments will offer you uncontrolled movements, low quality materials and tip breakage. The patient's comfort is inevitably compromised. The PIEZON® NO PAIN¹ technology offers foremost patient comfort.



On the left: **ROUGH** – Tooth surface treated with instrument X
On the right: **SMOOTH** - Tooth surface treated with the original PIEZON method and Swiss EMS instruments



AIRFLOW®: BEWARE OF SO-CALLED "COMPATIBLE" POWDERS

► Many providers claim that their imitation powders are more affordable and work fine with EMS equipment or devices. In fact, the opposite is true. These powders easily perforate EMS AIRFLOW® handpieces and damage the interior of the EMS AIRFLOW® devices.

► EMS emphatically warns against the use of non-approved powders from imitators, copycats or even counterfeiters. Beware! They do not comply with our strict quality criteria. It will be your patients who will have to pay the price for these "cost-cutting" solutions.

► Can you imagine the harm that these powders can do to your patients’ teeth? EMS strongly recommends that dental practitioners only treat their patients with EMS powders.

► Treat your patients with the clinical GBT protocol only ! You will win patients in recalls with GBT. With copied methods or materials, you will lose them.



Watch how our AIRFLOW® Handpiece is destroyed in only 2 minutes with a fake powder. How do you think this will look in the mouth of your patients ?



THE BEST CLINICAL

08 RECALL

HEALTHY PATIENT = HAPPY PATIENT

- ▶ Schedule recall frequency according to risk assessment
- ▶ Ask your patient if he or she liked the treatment

07 CHECK

MAKE YOUR PATIENT SMILE

- ▶ Do a final check for remaining biofilm
- ▶ Ensure calculus is fully removed
 - ▶ Accurately diagnose caries
 - ▶ Protect with fluoride
 - ▶ No polishing anymore

06 PIEZON® PS

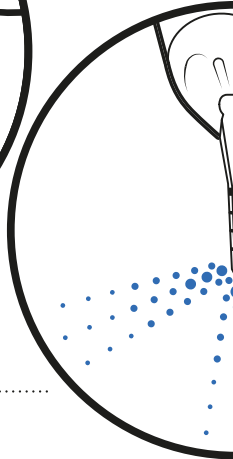
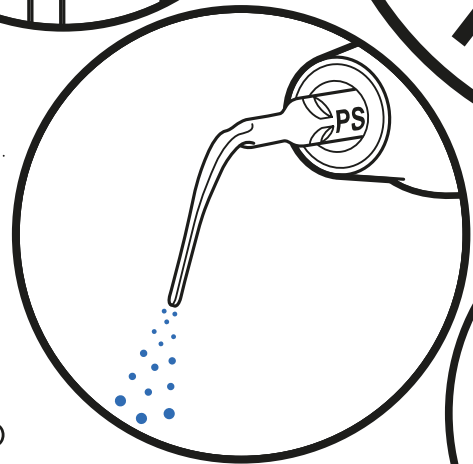
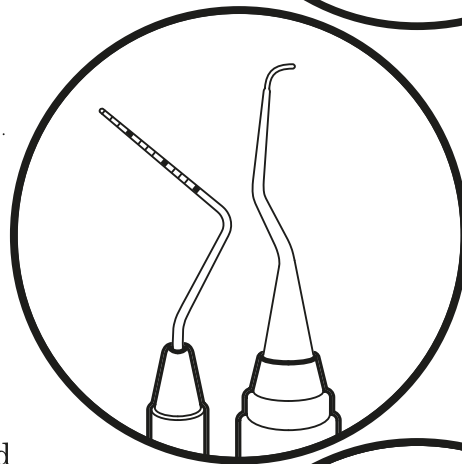
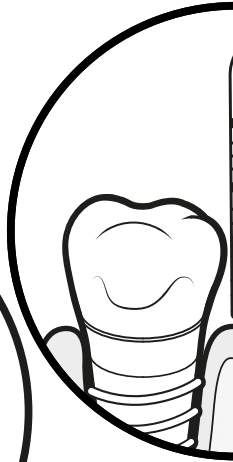
REMOVE REMAINING CALCULUS

- ▶ Use the minimally invasive EMS PIEZON® PS Instrument supra- and subgingivally up to 10 mm
- ▶ Clean > 10 mm pockets with mini curette
 - ▶ Use EMS PIEZON® PI MAX Instrument around implants up to 3 mm subgingivally and on restorations

05 PERIOFLOW®

REMOVE BIOFILM IN >4 TO 9 MM POCKETS

- ▶ Use AIRFLOW® PLUS Powder on natural teeth in deep pockets and root furcations and on implants
- ▶ Use new and slimmer PERIOFLOW® Nozzle



▶ The PIEZON® technology is a cornerstone of this GBT Protocol. Clinicians who were initially used to the exclusive efficiency and compliance when both are combined. Minimally invasive, the treatment delivers the highest level

PROTOCOL EVER!



01 ASSESSMENT AND INFECTION CONTROL

ASSESS EVERY CLINICAL CASE AND IMPLEMENT HYGIENE MEASURES

- ▶ Start by rinsing with BacterX[®] Pro mouthwash
- ▶ Assess teeth, gingiva and periodontal tissues
- ▶ Assess implants and peri-implant tissues

02 DISCLOSE

MAKE BIOFILM VISIBLE

- ▶ Highlight to patients the disclosed biofilm and their problematic areas with EMS Biofilm Discloser
- ▶ The color will guide biofilm removal
 - ▶ Once biofilm is removed, calculus is easier to detect

03 MOTIVATE

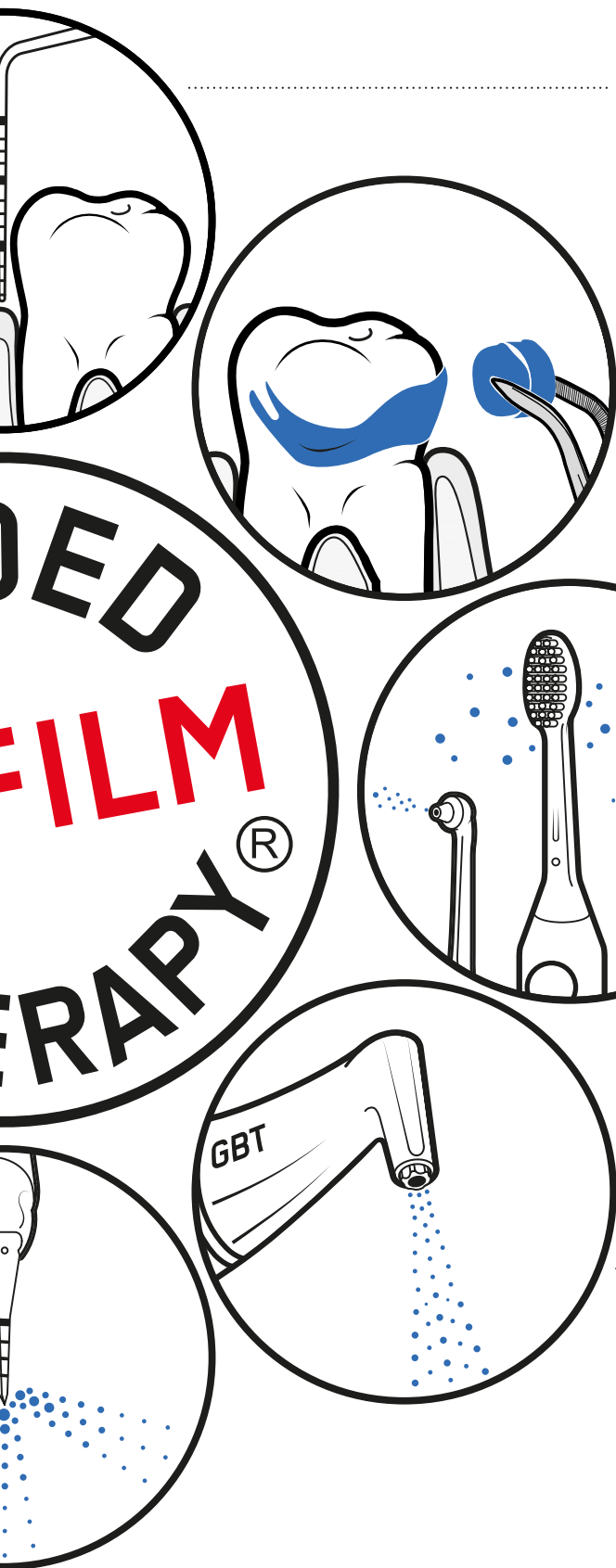
RAISE AWARENESS AND TEACH

- ▶ Emphasize the importance of prevention
- ▶ Instruct your patients in oral hygiene
- ▶ EMS recommends interdental brushes or dental floss as well as electric or manual toothbrushes and AIRFLOW[®] erythritol toothpaste for daily home care

04 AIRFLOW[®] MAX

REMOVE BIOFILM, STAINS AND EARLY CALCULUS

- ▶ Use AIRFLOW[®] MAX for natural teeth, restorations and implants
- ▶ Remove biofilm supra- and subgingivally up to 4 mm using AIRFLOW[®] PLUS 14 µm Powder
 - ▶ Also remove biofilm from gingiva, tongue and palate



...sive use of hand instruments and discover GBT and EMS PIEZON[®] Technology are amazed by the results, the
...l of comfort, safety and efficiency.

A GAME CHANGER

“I’ve just had a routine scaling with my hygienist and I cannot believe how different it felt. When I have the treatment it’s usually quite sensitive on my lower front teeth but today it was almost like she wasn’t touching them at all. I didn’t feel a thing!”

**HARRIS CHARLOTTE,
PATIENT**

“With the EMS devices, we can motivate our patients in terms of prophylaxis. Through a pleasant feeling in the mouth – WELLNESS factor. Removal of stains – BEAUTY factor. 100% plaque removal – HEALTH factor.”

**MICHAELA GRUL
DENTIST**

WE ALL LOVE GBT!



“The devices of the company EMS helped us very much to simplify the procedure protocol of our “prophylaxis sessions”, to make it more gentle on substance and more patient-friendly (less pain). After more than 3 years, prophylaxis has become a technically and economically very important part of our dental practice thanks also to the scientific and technical competence (e.g. NO PAIN with PS tip, PLUS Powder) of EMS.”

**DR. NADINE STRAFELA-BASTENDORF,
DENTIST**

“PIEZON® PS is really the most complete instrument for hard calculus removal. Its slim design allows for universal utilization supra- and subgingivally in the least invasive way and with the highest comfort for the patient.”

**CELSO DA COSTA
HEAD OF SDA & RDH – CH**

“The pressure required to remove deposit is very light, which made scaling less strenuous resulting in less operator fatigue”

**FAYE DONALD
RDH – UK**

**“I FEEL
GOOD”**

“I really enjoyed GBT. 1st time no pain during ultrasonics. Will happily come every 3 months if the same treatment is followed”

**ALISSON BENON
PATIENT**

“I’m so happy with GBT, I could not accept any other teeth cleaning method anymore. Thank's to GBT I see my dentist regularly and gladly for my prophylaxis. And each time I leave the office, I'm happy with my clean and brilliant white smile! To me prophylaxis with GBT has become a great experience and I dearly recommend it!”

SABINE PAVICIC, PATIENT

**READ MORE
TESTIMONIALS**



YOUR PATIENTS ASK FOR **WELLNESS** AND NOT FOR PAIN



GBT

E.M.S.
Electro Medical Systems S.A.
Ch. de la Vuarpillière 31
1260 Nyon - Switzerland
+41229944700
EMS-DENTAL.COM

1. The NO PAIN treatment requires all four of the following:

- The PIEZON® NO PAIN module integrated into the AIRFLOW® Prophylaxis Master, providing dynamic power regulation that detects and adjusts for calculus
- The original PIEZON® handpiece
- The original PIEZON® PS Instrument
- A clinician trained by the Swiss Dental Academy

EMS 
MAKE ME SMILE.