



presidential

July - September 2024

Q3 Specials



presidential
dental | medical | veterinary



Luke Williams
0421 493 876
NSW/ACT/VIC



Lee O'Bryan
0427 758 650
Greater Sydney



Gezanne d'Assonville
0423 886 473
Queensland



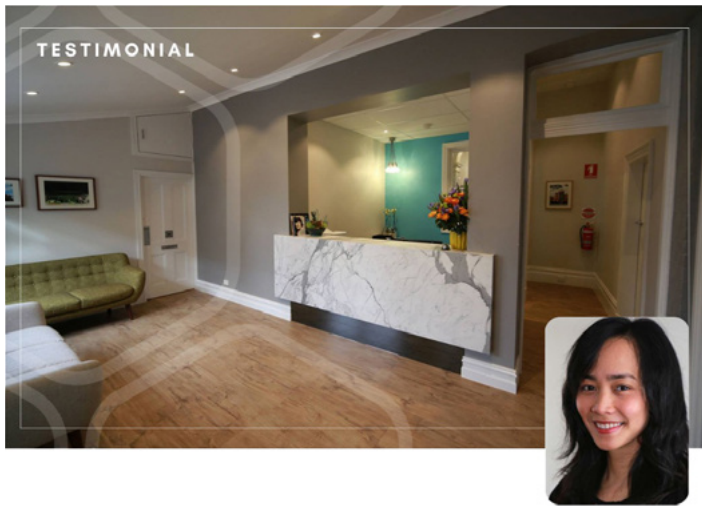
Michelle De Blasis
0422 391 596
Victoria/Tasmania

 **1800 PRESIDENTAL**
(1800 773 743)

 presidential.com.au

 info@presidential.com.au

 /PresidentialAustralia



"Michelle De Blasis is the rep who we dealt with. She is professional and super efficient.

It made buying our A-dec chair a smooth operation, even with some changes such as refurbishing an existing chair and relocation. To put things into perspectives, a competitor company only got back to us regarding our A-dec chair purchase enquiry a few weeks after our chair (sold by Michelle of Presidential) was installed! Totally happy."

Dr Cindy Nguyen



"Incredible service from the very start by Michelle and Presidential Team. Michelle is exceptionally professional and organised and had all our orders in a timely manner. The servicing and installation team led by Lars and Darcy were fantastic at liaising with the builders directly and had everything installed and good to go without any hassle.

Highly recommend!"

Dr Shrey Surya



"I have had amazing service and quality workmanship from the whole service installation and sales team at Presidential!!! I had a compressor and suction break down and was unable to work, two technicians worked to get me up and running with dedication, knowledge, and great service!! They were amazing and I am very grateful and happy!! It's nice to know as dentists that patients can turn to us; and we too can turn to a team like this for excellent care!! Michelle from the sales team is very dedicated and committed to her job and definitely cares!!! I totally recommend them to every dentist in Australia!!!"

Dr Nicola Stephen



"I wholeheartedly recommend Presidential as a dental supplier, and I cannot speak highly enough of Lee's exceptional professionalism, honesty, promptness and patience. Her expertise, dedication and unwavering support have been instrumental. I am grateful for her invaluable assistance and the outstanding service she has provided. Presidential and Lee have undoubtedly exceeded my expectations, and I am confident in their ability to deliver exceptional products and services to all their customers.

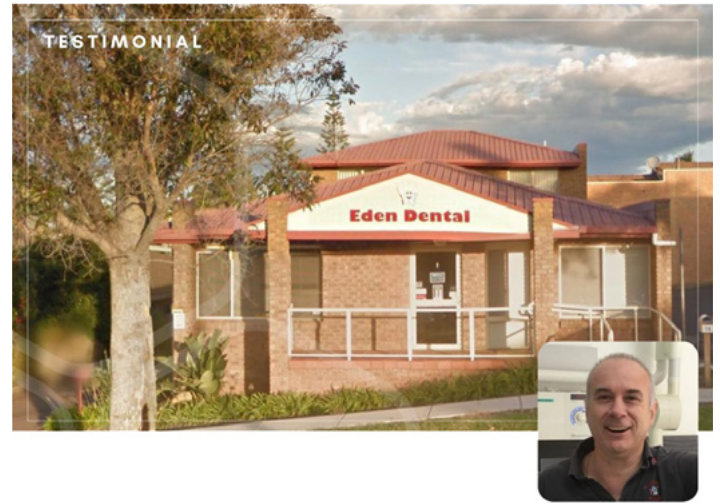
Thank you, Presidential, and a special thank you to Lee for your remarkable support!"

Dr Ben Lee



"We are using new Lisa VA-B and are very happy with the performance of the sterilizer and the customer service of Luke and Presidential Team."

Dental Embassy



"Luke Williams and his team at Presidential are a pleasure to deal with. From purchase to delivery and after sales support their customer service is next to none. I would highly recommend them to anyone looking to purchase equipment for their surgery."

Dr Gabriel Maratheffis



"I have been working with Presidential and A-dec for a number of years.

Presidential is always quick to get back to me, provides fantastic pricing and stays in regular contact. Presidential's service is always fantastic - from install to maintenance. My A-dec 500 chairs are completely reliable and provide outstanding comfort for my patients. If you are looking for new equipment contact Presidential and they will look after you!"

Dr Mehdi Rahimi, Chatswood



"Our surgery has been involved with many service companies over the years and Presidential has been the stand out from all the companies we have used before. The standard of service, prompt response and excellent sales service from Presidential is unprecedented. Thanks to Presidential Team!"

Dr Jason Pireh, Kellyville

A-dec 500 PRO - Traditional

- A-dec 500 chair with Lever Headrest
- Sewn Upholstery - ST JOHN colour
- Traditional delivery system with fibre-optics module, 2 x fibre-optics tubings, NLZ Electric Motor, DS7 7-Inch Touchpad, Standard Size Tray and Tray Holder
- Newtron Scaler built-in kit, with 3x scaler tips
- Analogue Scaler Connection Kit
- 551STA Assistant Suction and CP5 Instrumentation
- Suction Tip Adaptor
- Cuspidor and Support Centre
- EP Valve and Adaptor
- Radius-Style LED dental light
- 482 monitor mount
- Neovo Medical Grade Screen - 22"
- HDMI Cable 15m
- 521/522/NBR Doctor and Assistant Stools

Sydney Showroom

Available January 2024

SAVE
\$25,858

RRP \$105,613
SPECIAL PRICE:
\$79,755



Job 54080

*Image for illustration purposes only

A-dec 500 - Continental

- A-dec 500 - Continental
- Sewn Upholstery - FUCHSIA
- Continental delivery system with fibre-optics module, 2x fibre-optics tubings, NLZ Electric Motor, Deluxe Plus Touchpad, Standard Size Tray and Tray Holder
- Newtron Scaler built-in, with 3x scaler tips
- Assistant Suction and Instrumentation
- Cuspidor and Support Centre
- Neovo Medical Grade Screen - 22"
- 482 monitor mount
- Radius-Style LED dental light
- 521/522/NBR Doctor and Assistant Stools
- EP Valve and adaptor

Brisbane Showroom

Available January 2024

SAVE
\$29,698

RRP \$98,994
SPECIAL PRICE:
\$69,296



Job 44018

*Image for illustration purposes only

A-dec 500 - Continental

- A-dec 500 - Continental
- Sewn Upholstery - SKY
- Continental delivery system with fibre-optics module, 2x fibre-optics tubings, NLZ Electric Motor, Deluxe Plus Touchpad, Standard Size Tray and Tray Holder
- Newtron Scaler built-in, with 3x scaler tips
- Assistant Suction and Instrumentation
- Cuspidor and Support Centre
- Neovo Medical Grade Screen - 22"
- 482 monitor mount
- Radius-Style LED dental light
- 521/522/NBR Doctor and Assistant Stools
- EP Valve and adaptor

Sydney Showroom

Available January 2024

SAVE
\$29,698

RRP \$98,994
SPECIAL PRICE:
\$69,296



Job 44025

*Image for illustration purposes only

A-dec 500 - Continental

- A-dec 500 - Continental
- Sewn Upholstery - PARROT
- Continental delivery system with fibre-optics module, 2x fibre-optics tubings, NLZ Electric Motor, Deluxe Plus Touchpad, Standard Size Tray and Tray Holder
- Newtron Scaler built-in, with 3x scaler tips
- Assistant Suction and Instrumentation
- Cuspidor and Support Centre
- Neovo Medical Grade Screen - 22"
- 482 monitor mount
- Radius-Style LED dental light
- 521/522/NBR Doctor and Assistant Stools
- EP Valve and adaptor

Newcastle Showroom

Available January 2024

SAVE
\$29,698

RRP \$98,994
SPECIAL PRICE:
\$69,296



Job 44020

*Image for illustration purposes only

PLEASE CALL 1800 773 743
TO BOOK YOUR SHOWROOM APPOINTMENT
AT THE NEWCASTLE OR SYDNEY FACILITIES

DEPOSIT ONLY!
RESERVE NOW,
PAY LATER.

A-dec 400 - Traditional

- A-dec 400 Chair with Lever Headrest
- SEWN Upholstery - APRICOT colour
- Traditional Delivery System with 2 x fibre-optic tubing
- Floorbox
- NLZ Electric motor with fibre-optic tubing, Deluxe Touchpad
- Large Size Tray and Holder
- Satelec Newtron Scaler built-in kit, with 1x scaler handpieces and 3x tips
- 551 Assistant Suction and Instrumentation
- 461C Spittoon and Support Centre
- A-dec LED dental light, chair-mounted
- 381 Monitor Mount and Neovo Medical Grade 22" Screen
- Dr and Assistant Stools
- EP Valve and Adaptor

Newcastle Showroom

Available Feb 2024

SAVE \$23,248

RRP \$77,494
SPECIAL PRICE:

\$54,246

*Image for illustration purposes only



Job 44021

A-dec 300 PRO - Continental

- A-dec 300 chair with Knob Headrest
- Sewn Upholstery - PARROT colour
- Traditional delivery system with fibre-optics module, 2 x fibre-optics tubings, NLZ Electric Motor, CP5i 5-Inch Touchpad, Standard Size Tray and Tray Holder
- Newtron Scaler built-in kit, with 3x scaler tips
- Analogue Scaler Connection Kit
- 551STA Assistant Suction and CP5 Instrumentation
- Suction Tip Adaptor
- Cuspidor and Support Centre
- EP Valve and Adaptor
- Radius-Style LED dental light
- 482 monitor mount
- Neovo Medical Grade Screen - 22"
- HDMI Cable 15m
- 421/422 Doctor and Assistant Stools

Sydney Showroom

Available Jan 2025

SAVE \$19,999

RRP \$79,998
SPECIAL PRICE:

\$59,999

*Image for illustration purposes only



Job 56855

A-dec 300 Radius - Traditional

- A-dec 300 Radius chair with Knob headrest
- Seamless/FORMED Upholstery - SKY BLUE colour
- Traditional delivery system with fibre-optics module, Fibre-optic high speed line, Slow speed line with fibre-optic NLZ electric motor, Deluxe touchpad, Standard size tray and holder
- Satelec Newtron scaler built-in kit with 3x scaler tips
- Assistant Suction and Instrumentation
- EP valve and adaptor
- Cuspidor and Support centre
- Neovo Medical Grade Screen - 22"
- 381 Monitor mount
- 572L Radius-style LED dental light
- 421/422 Doctor and Assistant stools

Sydney Showroom

Available Feb 2024

SAVE \$20,234

RRP \$67,446
SPECIAL PRICE:

\$47,212

*Image for illustration purposes only



Job 44022

A-dec 300 Pedestal - Traditional

- A-dec 300 Chair with Knob Headrest
- Seamless/FORMED Upholstery - SKY BLUE colour
- Traditional Delivery System with 1 x fibre-optic tubing
- Floorbox
- NLZ Electric Motor with fibre-optic tubing, Deluxe Touchpad,
- Standard Size Tray and Holder
- Satelec Newtron Scaler built-in kit, with 1x scaler handpiece and 3 x tips
- 353 Assistant Suction and Instrumentation
- 363 Cuspidor and Support Centre
- A-dec LED dental light, chair-mounted
- 381 Monitor Mount and Neovo Medical Grade 22" Screen
- Dr and Assistant Stools
- EP valve and adaptor

Brisbane Showroom

Available Feb 2024

SAVE \$19,050

RRP \$63,498
SPECIAL PRICE:

\$44,448

*Image for illustration purposes only



Job 44016

PLEASE CALL 1800 773 743
TO BOOK YOUR SHOWROOM APPOINTMENT
AT THE NEWCASTLE OR SYDNEY FACILITIES

DEPOSIT ONLY!
RESERVE NOW,
PAY LATER.

THERE'S NEVER BEEN A BETTER TIME TO EXPERIENCE & SAVE ON A-DEC



A-DEC 400

\$45,239

Save up to **\$24,892!!**

PACKAGE INCLUDES:

- A-dec 400 chair with standard headrest
- Sewn Upholstery FUSCHIA
- Knob headrest
- A-dec 300 Traditional delivery
- Without Spittoon
- 521/522 Stools
- NLZ electric motor
- 551 Assistants instrumentation
- A-dec 500 LED light



A-dec 300 Radius – Traditional

- A-dec 300 Radius chair with Knob headrest
- Seamless/FORMED Upholstery – SKY BLUE colour
- Traditional delivery system with fibre-optics module, Fibre-optic high speed line, Slow speed line with fibre-optic NLZ electric motor, Deluxe touchpad, Standard size tray and holder
- Satelec Newtron scaler built-in kit with 3x scaler tips
- Assistant Suction and Instrumentation
- EP valve and adaptor
- Cuspidor and Support centre
- Neovo Medical Grade Screen – 22"
- 381 Monitor mount
- 572L Radius-style LED dental light
- 421/422 Doctor and Assistant stools

**PURCHASE
A-DEC 300
AT 2022 PRICES!
- WHILE STOCKS
LAST!**



**SAVE
\$14,339**

RRP \$57,596
SPECIAL PRICE:

\$43,197

**Image for illustration purposes only*

**ORDER
NOW FOR NEXT
SHOWROOM
PACKAGE
RELEASE**

PLEASE CALL 1800 773 743
TO BOOK YOUR SHOWROOM APPOINTMENT
AT THE NEWCASTLE OR SYDNEY FACILITIES

MASSIVE STOCK CLEARANCE SALE!

*Prices slashed on existing stock – while stock lasts. *All Clearance items must be paid in full to secure the order.
 *Clearance offers can not be combined with any other package offers. *Some items are display stock from our showroom. These come with full warranty term starting from date of sale to customer.

PLANT EQUIPMENT



AC400 Compressor
 \$12,037 **SAVE \$5,150!!**

IMAGING EQUIPMENT



Vatech EZRAY Air W 600
 \$6,000 **SAVE \$1,200!!**



Vatech VSP
 \$9,000 **SAVE \$1,890!!**



ScanX Edge
 \$7,530 **SAVE \$3,633!!**



ScanX Duo Touch
 \$15,000 **SAVE \$5,449!!**

HANDPIECE OILERS



Assistina TWIN
 \$2,978 **SAVE \$1,091!!**

HANDPIECES



WE-56
 \$313.20 **SAVE \$208.80!!**



TG-98 LN
 \$976.80 **SAVE \$651.20!!**



RK-97 L
 \$1,618.80 **SAVE \$1,079.20**



TK-98 L
 \$1,480.80 **SAVE \$987.20!!**



WP-64 M
 \$430.20 **SAVE \$286.80!!**



WK-56 LTS
 \$1,102.80 **SAVE \$735.20!!**



WK-56 LT
 \$1,102.80 **SAVE \$735.20!!**



WG-99 A
 \$1,039.80 **SAVE \$693.20!!**



WE-56 LED G
 \$975.60 **SAVE \$650.40!!**

Ask us about stock A-dec Upholstery sets at massive discounts!

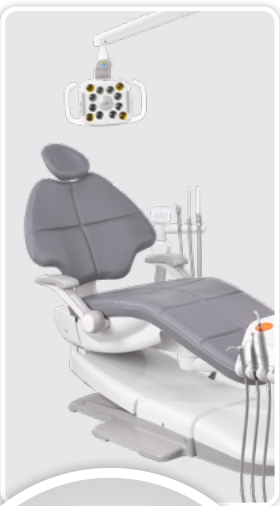


FOR THE FIRST TIME



A-DEC CHAIR AND DÜRR IMAGING PACKAGES NOW AVAILABLE!

OFFER 1



Buy an A-dec chair package* and get

\$10,000 OFF

A Dürr integrated VistaCam iX HD Smart Camera and VistaIntra X-Ray



OFFER 2

INTRO PACKAGE
\$29,990

INCLUDES

- 311B Pro Compatible Chair
- Formed Upholstery
- 332 Pro delivery with CP5 Touchpad
- 3-position Control Block
- 351/S/3 Assistant's instrumentation
- 372 LED Light



OFFER 3

SIMPLIFIED PACKAGE
\$38,750

INCLUDES

- 311B Pro Compatible Chair
- Formed Upholstery
- 332 Pro delivery with CP5i Touchpad
- 4-position Control Block with electric motor
- 551STA Assistant's instrumentation
- 372 LED Light

TERMS AND CONDITIONS: *Package must include chair, upholstery, configured delivery head with NLZ electric motor and standard tray holder 551STA assistants instrumentation, A-dec 500 LED light, scaler & stool set. Above offers cannot be combined. Offers cannot be used with any other A-dec chair promotion. Offers end 30 September 2024. All prices include GST. JAD2400028/Dealer

Hygiene is in our DNA

THE HYGOCLAVE 50 AND 40 SERIES



The **Hygoclave 50 and 40 series** offers dental practices a professional Class B solution that combines impressive performance with a well thought-out operating concept for maximum efficiency and exceptional user friendliness. It is designed to cope effortlessly with tough day-to-day working environments.


 NOW AVAILABLE WITH A **MONEY-BACK GUARANTEE**
Conditions Apply¹



Image for illustrative purposes only.

OFFER 1

SAVE \$11,510 ON A HYGOCLAVE 50 PACKAGE

When you purchase any A-dec 500 chair package²



Hygoclave 50 + Printer + VistaSoft Monitor Software

OFFER 2

HYGOCLAVE 50 SERIES PACKAGE

WAS \$18,170 | NOW \$14,995 | SAVE \$3,175



Hygoclave 50 + Printer + VistaSoft Monitor Software

OFFER 3

HYGOCLAVE 40 PACKAGES

17L WAS \$15,140 | NOW \$11,595 | SAVE \$3,545

20L WAS \$16,150 | NOW \$12,995 | SAVE \$3,155



Hygoclave 40 + Printer

TERMS AND CONDITIONS: 1. Contact Presidential for further details. 2. Chair package must include Chair, Upholstery, Configured delivery system, Assistant's delivery and Light. Not valid for A-dec 400 or 300 packages. Offer cannot be combined with any other A-dec Chair or Dürr Hygoclave promotional offer. Offers end 30 June 2024. All prices include GST.



VistaSystem Savings!

Your Complete Intra and Extra-oral Imaging Solution

The Dürr VistaSystem offers an imaging solution that's not just about clarity, it's about delivering certainty with every scan.



**OFFER
1**

BUY AN
A-DEC CHAIR
PACKAGE*
SAVE \$10,000
off Dürr Integrated
VistaCam iX HD
Smart Camera and
VistaIntra X-Ray



**OFFER
3**

VISTACAM iX
SAVE \$1,000
off any benchtop
VistaCam iX HD
Smart or iX camera

Brilliant images and
excellent camera diagnosis

• One camera, many options • Excellent image quality • Software analysis for detection of caries lesions and visualisation of plaque through fluorescence • Diagnostic aid for detection of proximal caries, without radiation exposure • Multi-user capability.

**OFFER
2**

PURCHASE
AN OPG OR
CBCT SYSTEM
SAVE \$4,000
on VistaScan Mini View 2.0
Image Plate Scanner



Vistascan Mini has been known for its unparalleled image quality for the past 20 years. The unit keeps evolving, now with a new design and AI image processing features, helping you streamline your intra-oral X-ray process.

**OFFER
4**

VISTA INTRA DC:
X-RAY GENERATOR
WAS \$7495
NOW \$6995
SAVE \$500



• Simple operation and accurate positioning • Versatile arm lengths to suit your surgery • Reliable with long service life • Adjustable mA and kV • 0.4 mm Focal Spot.

TERMS AND CONDITIONS: *Package must include Chair, upholstery, configured delivery system with NLZ electric motor and standard tray holder, 500 LED light, scaler and stool set. Offer cannot be combined with any other chair promotion. Offer ends 30 September, 2024. Prices Inc GST. JAD2400029

Lisa

Promotion Package*

Traceability kit includes:
Consumable Kit
Label printer
Label printer
QR Bar code reader



CODE: PLUS_Discount LISA

SAVE over \$5,000 with a Lisa steriliser package from Presidential!



**Free
Traceability
Kit**



**Synea Fusion & Vision
Promotion**



**BUY 2
GET 1
FREE!!***

**BUY 3
GET 2
FREE!!***

**ASK US
FOR A
QUOTE &
SAVE!!**

**Can Mix & Match, FREE item is equal to the lowest priced item.*

 <p>TK-97 L REF 30017000 21 W Ø 10 mm</p>	 <p>TK-98 L REF 30019000 24 W Ø 11,5 mm</p>	 <p>TK-94 L REF 30016000 14 W Ø 9 mm</p>	 <p>WK-93 LT REF 30024000 1:4,5 Ø 9,1 mm</p>	 <p>WK-99 LT REF 30023000 1:5 Ø 9,5 mm</p>	 <p>WK-86 LT REF 30027000 3:1 Ø 9,5 mm</p>	 <p>NEW PRODUCT WK-900 LT REF 30418000 1:4 Ø 10,7 mm</p>
 <p>WK-66 LT REF 30026000 2:1 Ø 9,5 mm</p>	 <p>WK-56 LT REF 30025000 1:1 Ø 9,5 mm</p>	 <p>HK-43 LT REF 30028000 1:1</p>	 <p>TG-97 L REF 30004000 18 W Ø 10 mm</p>	 <p>TG-98 L REF 30001000 21 W Ø 11,5 mm</p>	 <p>NEW PRODUCT WG-900 LT REF 30459000 1:4 Ø 10,7 mm</p>	
 <p>WG-99 LT REF 30007000 1:5 Ø 9,5 mm</p>	 <p>WG-66 LT REF 30011000 2:1 Ø 9,5 mm</p>	 <p>WG-56 LT REF 30009000 1:1 Ø 9,5 mm</p>	 <p>WG-67 LT REF 30084000 2:1</p>	 <p>HG-43 A REF 30013000 ● 1:1</p>		



Get up to **\$5,000** worth of **FREE EXTRAS** with the Surgic Pro2 Complete Set!

Purchase the Surgic Pro2 complete set and choose either an additional micromotor and cable or two free surgical handpieces.



PROMO CODE **NSKQ32024**

Surgic Pro2 Optic Complete Set with X-SG20L Optic Handpiece

Optic	Model	Order Code	RRP
✓	Surgic Pro2 OPT	Y1500511	\$8,726

Features:

- Control unit
- SGL80M Optic micromotor
- X-SG20L Optic handpiece (20:1 reduction)
- Foot control wireless
- Irrigation tube (pack of 3)
- Other accessories

Surgic Pro2 Non-optic Complete Set with SG20 Non-optic Handpiece

Optic	Model	Order Code	RRP
✗	Surgic Pro2 NON-OPT	Y1500512	\$7,479

Features:

- Control unit
- SG80M Non-optic micromotor
- X-SG20 handpiece (20:1 reduction)
- Foot control wireless
- Irrigation tube (pack of 3)
- Other accessories

FREE extra MicroMotor OR **2 FREE Surgical Handpieces**



*SGL80M or SG80m Micromotor, any 2 Contra-Angle and Straight Surgical Handpieces



Surgical Handpieces

Surgical Handpieces for Every Application

Our range of surgical handpieces is designed to suit every surgical application, from dental implants to surgical extractions.

X-SG20L



NSK Ti-Max X-SG20L Titanium Surgical Optic Handpiece 20:1 Reduction

Optic	Model	Order Code	RRP	30% OFF
✓	X-SG20L	C1003	\$2,720	\$2,176

SGS-ES



NSK SGS-ES Surgical Non-Optic Micro Surgery 1:1 Straight Handpiece for Surgical Burs (2.35mm)

Optic	Model	Order Code	RRP	30% OFF
✗	SGS-ES	H264	\$1,520	\$1,216

SG20



NSK Surgical Non-Optic S-Max SG20 Stainless Steel Implant Handpiece 20:1 Reduction

Optic	Model	Order Code	RRP	30% OFF
✗	SG20	C1010	\$1,657	\$1,325

SGS-E2S



NSK SGS-E2S Surgical Non-Optic Micro Surgery Handpiece Straight 1:2 Increasing

Optic	Model	Order Code	RRP	30% OFF
✗	SGS-E2S	H266	\$1,782	\$1,425

Z-SG45L



NSK Ti-Max Z-SG45L Titanium Surgical Optic 45 Degrees Handpiece 1:3 Speed Increasing

Optic	Model	Order Code	RRP	30% OFF
✓	Z-SG45L	C1107	\$2,221	\$1,776

SGA-ES



NSK SGA-ES Surgical Non-Optic Micro Surgery 1:1 Handpiece 20 Degrees Angled

Optic	Model	Order Code	RRP	30% OFF
✗	SGA-ES	H263	\$2,107	\$1,685

X-SG65L



NSK Ti-Max X-SG65L Titanium Surgical Optic Straight Handpiece 1:1 Speed Ratio

Optic	Model	Order Code	RRP	30% OFF
✓	X-SG65L	H1009	\$2,371	\$1,896

SGA-E2S



NSK SGA-E2S Surgical Non-Optic Micro Surgery 1:2 Handpiece 20 Degrees Angled

Optic	Model	Order Code	RRP	30% OFF
✗	SGA-E2S	H265	\$2,472	\$1,977

30% OFF Surgical Handpieces

New Ti-Max Z High-Speeds

Experience the power with the **NEW Ti-Max Z990/ Z890** air turbine handpieces.

With up to 44W of power, the most powerful handpiece in the current market!

BUY 2 Ti-Max Z990 / Z890 / Z Micro and **GET 1 FREE**

Ti-Max Z2 Series



NSK Ti-Max Z990L Titanium High Speed Handpiece Optic Standard Head for NSK Coupling

Optic	Model	Order Code	RRP
✓	Z990L	PA23730001	\$1,981



NSK Ti-Max Z890L Titanium High Speed Handpiece Optic Miniature Head for NSK Coupling

Optic	Model	Order Code	RRP
✓	Z890L	PA23720001	\$1,981

ZMicro



NSK Ti-Max Z Micro Titanium High Speed Handpiece Optic Micro Head for NSK Coupling

Optic	Model	Order Code	RRP
✓	ZMicro	PA2357	\$1,381

TRY BEFORE YOU BUY

Contact us for a **FREE TRIAL** of The **NEW Ti-Max Z990 / Z890** or **Z Micro**

FX Handpieces

Ergonomic. Functional. Reliable

BUY 4 FX Handpieces and **GET 1 FREE**



- Non-optic
- 1:1 Direct Drive
- Push Button CA burs

Optic	Model	Order Code	RRP
✗	FX25m	C1052001	\$462



- Non-optic
- 1:1 Direct Drive
- Latch Type CA burs

Optic	Model	Order Code	RRP
	FX22	C1129091	\$279



- Non-optic
- 4:1 Direct Drive
- Push Button CA burs

Optic	Model	Order Code	RRP
✗	FX15m	C1053001	\$679



- Non-optic
- 16:1 Reduction
- Rotational files

Optic	Model	Order Code	RRP
✗	FX75m	C1055001	\$788



- Non-optic
- 4:1 Reduction
- Screw in cups

Optic	Model	Order Code	RRP
✗	FX57m	C1054001	\$508



- Non-optic
- 1:1 Direct Drive
- HP Burs

Optic	Model	Order Code	RRP
✗	FX65m	H1014001	\$461

iCare

Get longevity out of your handpieces with the iCare, and increase your work flow with 2 FREE additional S-Max handpieces.

Choose any Air Turbine or Contra-angle in optic or non optic, any connection!

iCare C2

NSK iCare C2 Standard System Complete. 2 rotation ports and 2 non-rotation ports.



Model	Order Code	RRP	25% OFF
iCare C2 Type	Y1002787	\$5,489	\$4,665

iCare C3

NSK iCare C3 Standard System Complete. 3 rotation ports and 1 non-rotation port.



Model	Order Code	RRP	25% OFF
iCare C3 Type	Y1002788	\$5,863	\$4,983

25% OFF plus **2 free S-Max Handpieces**



*Any High-Speed or Contra-Angle from the S-Max Range

Economical & Durable

S-Max Series*



- Optic
- Miniature Head
- 23W

Optic	Model	Order Code	RRP	30% OFF
✓	M800L	P1253	\$1,381	\$1,104



- Optic
- Standard Head
- 26W

Optic	Model	Order Code	RRP	30% OFF
✓	M900L	P1254	\$1,381	\$1,104



- Optic
- Pediatric Head
- 9W

Optic	Model	Order Code	RRP	30% OFF
✓	S-Max Pico	P1140	\$1,381	\$1,104



- Optic
- 1:5 Speed Increasing
- FG Burs

Optic	Model	Order Code	RRP	30% OFF
✓	M95L	C1023	\$1,763	\$1,410



- Optic
- 1:1 Direct Drive
- CA Burs

Optic	Model	Order Code	RRP	30% OFF
✓	M25L	C1024	\$1,353	\$1,082



- Non-optic
- 1:1 Direct Drive
- CA Burs

Optic	Model	Order Code	RRP	30% OFF
✗	M25	C1027	\$949	\$759

*High Speed connections available for KaVo, W&H, Sirona promo priced at \$1,272.

30% OFF S-Max Handpieces

▲ Oral Hygiene

Air Polishing

Prophy-Mate NEO



- Supra-gingival Cleaning
- For use with FlashPearl Powder

Model	Order Code	RRP	30% OFF
PMNG-PTL-P	Y135029	\$1,696	\$1,356

Perio-Mate



- Subgingival cleaning and BioFilm Removal
- For use with Perio-Mate Powder

Model	Order Code	RRP	30% OFF
PER-PTL-P	Y1002654	\$1,696	\$1,356

Other connections available for KaVo, W&H, Sirona promo priced at \$1,357.

30% OFF plus **FREE box of powder**

Varios Combi Pro

Ultrasonic Scaling & Air Polishing

Model	Order Code	RRP	25% OFF
VCP Basic Set	Y1004194	\$7,856	\$6,678



25% OFF

Ask us about our Bundle Offer!

▲ Portable Solutions

Portable Solutions that do not require integration.

Varios 970

NSK Varios 970 Non Optic Ultrasonic Scaler with Handpiece, 3 Tips and Irrigation (230V).



NLZ Electric Micromotor with Endodontic Function*

NSK NLZ E S230 ENDO Set Control & Main Unit, AC Adaptor, NLZ Motor/ Cord/Bracket.

*Does not include handpiece



Model	Order Code	RRP	30% OFF
Varios 970	Y1001175	\$3,743	\$2,994

Model	Order Code	RRP	30% OFF
NLZ-E	Y1500361	\$5,942	\$4,743

30% OFF

Mobile Dentistry

Embark on Your Mobile Dentistry Journey with NSK VIVAace and Dentalone Units!

Both units are easily transportable and feature a convenient "plug & play" design. Equipped with suction, a 3-way syringe, a multifunctional micromotor, and a Varios ultrasonic scaler, these units empower you to perform a wide range of clinical procedures anytime, anywhere

VIVAace Complete Set

Model	Order Code	RRP	25% OFF
VIVAace Complete Set	Y1004228	\$21,060	\$17,901

VIVA ace complete set includes:

- VIVA ace Basic Set
- VIVA ace Motor Kit
- VIVA ace Scaler Kit

Features:

- Mobile and compact
- VA 170 Lux Ultrasonic Scaler
- Water tank for spray
- Suction
- Electric NLX Nano brushless micro-motor with LED light
- Endodontic function
- Multi-function syringe
- Dual foot controls
- Height adjustable console



Dentalone

Model	Order Code	RRP	25% OFF
Dentalone Complete Set	S9070	\$23,755	\$20,191

Dentalone complete set includes:

- Brushless NLX nano micro-motor with LED light
- Integrated multi function ultrasonic scaler
- Varios 170 with LED light
- Syringe with air/water/spray with LED light
- Cannula for saliva
- Water tank for spray
- Tank for vacuum
- Built in compressor
- Built in suction pump
- Variable foot-control



25% OFF

All prices as listed. Valid until 30 September 2024. Not to be used in conjunction with any other NSK promotions. All prices are as quoted in AUD and include GST.

Setup your new surgery with Presidential and SAVE!!

BUNDLE 1

- 2 x Melag PRO LINE 23B+
- MelaTherm 10
- MelaTherm accessories:
Flex Baskets 2 and 3,
Small parts container,
upright instrument compact
- Meladem 53



Receive
\$2,500 off RRP
with this
bundle!!

BUNDLE 2

- 2 x Melag 44B+ Evolution
- MelaTherm 10 Evolution
- MelaTherm accessories:
Flex Baskets 2 and 3,
Small parts container,
upright instrument compact
- Meladem 53



Receive
\$3,500 off RRP
with this
bundle!!

Ask us about special pricing on MelaSTORE, MelaTRACE and MelaSEAL!

Contact us today to see how much you can save
on your new Steri Room Equipment Package!

Enbio Pro & Enbio S



Enbio sterilisers are up to 6 times smaller and 3 times lighter than a typical class-B / vacuum autoclave. But when it comes to work efficiency, they keep up the pace.

Superfast sterilisation

Up to 4 times faster cycle time than the typical autoclave.

Perfectly dry pouches in no time

Enbio S sterilises a load of wrapped instruments in just 15 minutes (Enbio Pro – 18 minutes).

Emergency sterilisation

In case of emergency, you can sterilise unwrapped instruments for immediate use in just 7 minutes.

Simple

Enbio is so simple to install and operate that it takes longer to explain how simple it is.

Inaudibly silent

Enbio autoclaves work unbelievably silent. Wherever you use it, nobody will notice it's working.

Enbio Magic Filter: forget about water

Imagine a race car covering a long distance on a teaspoon of fuel. Enbio autoclaves are like that. With Enbio Magic Filter as a standard equipment, they can run up to 1000 processes on just 1 litre of demineralised water. No tap or sink required.

Enbio S. Speedmaster.

Enbio S is compact to fit even a cramped space. Unbelievably short process times will save your procedure in emergency, or allow sterilisation of the instruments as you go, between patients.

Enbio PRO. Small foot. Big space.

Enbio PRO is an ideal solution as a basic workhorse in a small practice. Superfast sterilisation and room to hold most of the instruments, including popular implant cassettes.



SPECIAL PRICING VALID UNTIL 30TH APRIL 2024!

Enbio Standard \$4,500 SAVE \$557.44!

Enbio Pro \$5,500 SAVE \$569.94!



New Surgery Setup Vatech Imaging deals!

vatech

1) Buy Green CBCT range, get FREE Intraoral X-ray package worth \$ 16,400



Green X 12/16/18™

+

FREE!



EzSensor HD™

&



EzRay Air™ Wall

or



VSP

VSP Phosphor Plate Scanner

2) Buy A9 or Smart Plus, get FREE Intraoral X-ray package worth \$ 13,000



vatech A9™

or



Smart Plus™

+

FREE!



EzSensor Classic™

&



EzRay Air™ Wall

or



VSP

VSP Phosphor Plate Scanner

Setting up a **New Practice?**
We've got you!

Get Full Digital Solution
with **vatech**!



vatech australasia

TRADE UP.

Want to Know
the **VALUE** of
your old OPG ?



vatech australasia

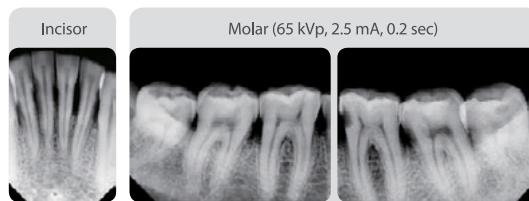
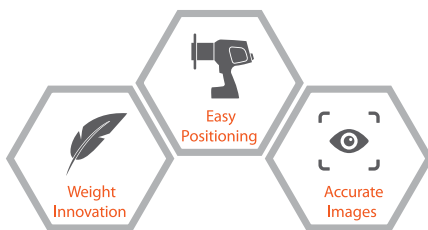
Contact **Presidential**
for details:
1800 773 743

Vatech EzRay Air Portable

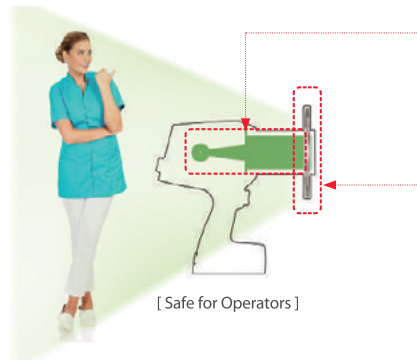
vatech

WEIGHT INNOVATION WITH CNT (CARBON NANO TECHNOLOGY)

The world's first dental application of Carbon Nano Technology. The EzRay Air Portable is a lightweight portable x-ray device that is designed for easy handling and stable positioning, delivering optimal image quality for your intra-oral x-ray images.



DOUBLE SCATTER SHIELD DESIGN FOR OPERATOR SAFETY



INTERNAL SHIELDING

The internal radiation shielding is perfectly designed to protect the operator from radiation leakage.

EXTERNAL BACKSCATTER SHIELDING

Exposure to radiation results from the beam interacting with the surface of the patient, causing radiation to bounce off as radiation scatters in different directions. The backscatter shield significantly reduces the amount of radiation being reflected.



LOWER COOLDOWN TIMES, FASTER WORKFLOW

The EzRay Air Portable's unique carbon-nano technology efficiencies, which are not available in traditional x-ray generation methods, means there is a 75% reduction in cool-down time between shots, when compared to leading competitor's devices. This allows users to spend less time waiting for their x-ray to be ready and more time diagnosing and treating the patient.

NO WARMUP TIME

With no initial start-up delay for conventional x-ray sources to warm up, the EzRay Air Portable's Carbon Nano Technology optimizes workflow by allowing for quicker exposure after you initially turn on the device.

BUY EzRay Air Portable + EzSensor Classic OR EzSensor HD, RECEIVE 20% OFF + receive a FREE Carry bag!

EzRay Air™ Portable + EzSensor HD™ = 20% OFF + FREE carry bag

Vatech EzScan

vatech

EXPAND YOUR DIGITAL WORKFLOW

CALL US FOR SPECIAL PRICING!



SIMPLE AND INTUITIVE INTERFACE FOR AN IMPROVED SCANNING EXPERIENCE

- Clear and intuitive interface for ease of use
- Essential functionality for many treatment plans



CASE SHARING

- EzScan Cloud is an easy-to-use file-sharing module for sharing digital impressions with the lab of your choice.



QUICK SCAN TIME FOR WORKFLOW EFFICIENCY

- Full arch scans in under 1 minute from start to finish



OPEN PLATFORM WITH NO CONTINUED FEES

- Easy to export to your treatment planning software or to send it to the lab of your choice
- Maximize your ROI with no continued fees

Remarkable
clinical
vision

New C50 Full HD Camera

FULL HD

Clear and detailed images

- A more **confident** final diagnostic
- Increased case **acceptance**

VISION MODE

Transcript of natural colors

- **Straight forward** patient education
- Great for comparing teeth stain and **sharing it with patient**

AUTO FOCUS

Gain of time & better image clarity

- **Ease of use** for the clinician
- Improved **patient comfort**



- **Easier** clinical evaluation
- **Enhanced communication** between clinician and patient

- **User-friendly** product for an improved procedure
- **Quick switch** : from one mode to another **in a second**

MACRO VISION

More visibility of fissures & caries

DEPTH OF FIELD

5 modes* available in **ONE** camera

caries detection workflow



About ACTEON®'s caries detection workflow

With ACTEON®'s caries detection product portfolio, you can implement an efficient caries detection and treatment workflow. It also helps you communicate more successfully with your patients and increase confidence.

SPECIAL INTRODUCTORY Ref# S_C50_0001- C50 with Diagnostic Aid RRP \$5,118.00
C50 OFFERS AVAILABLE Ref# S_C50_0002 C50 W/O Diagnostic Aid RRP \$4,895.00

pspix2

By your side, to care for everyone

X-MIND® prime has been engineered to ACTEON® place its 20 years of expertise at your service and those of your patients.

The first simple and intuitive personal imaging plate scanner provides outstanding images and was designed to free practitioners from constraints.

Whatever your patient's morphology or pathology, the PSPIX®² adapts to your needs. As your personal assistant or in collaborative mode, experience high productivity without compromising on quality.

This trustworthy assistant will provide you with clear and accurate results, empowering you to focus on what matters most: your patient.

- **Striking Contrast** for a more reliable diagnosis
- **The Smallest Scanner** on the market
- **The Fastest Scanner** on the market
- **The most intuitive** scanner
- **Thin and flexible imaging plates** of various sizes for adaptability and outstanding patient comfort.



RRP \$12,585.00

sopix series



SMART DOSE

The ACE® technology protects the image from over exposure for an optimal quality without any effort.



SMART FLOW

Our sensors adapt to all clinical cases, all morphologies and all software, to provide you and your patients greater comfort.



SMART TECHNOLOGY

Our latest generation of digital sensors provide a sharp X-ray image for an easy reading of the different dental tissues.

Save up to 25%

x-mind prime 2

Easy Acquisition Effective Workflow

- X-MIND® prime has been engineered to make your daily operations faster and more efficient.
- Its effortless and lightweight wall mounting solution, allows to quickly install it almost everywhere, ensuring the maximum accessibility in any context, for both standing or sitting patients.
- Its clean and neat user interface with finely designed workflows is intended to fulfill your daily tasks with the minimum number of steps, to take you straight to the result.
- Easy. Effective. Simply X-MIND® prime.



FAQ...

What's the maximum FOV size available on X-MIND Prime Version 2?

The maximum FOV size available on X-MIND Prime 2 is 12x10 cm (hxØ).

What's the highest resolution available on 3D images for X-MIND prime Version 2?

The highest resolution available on 3D images for X-MIND prime 2 is 72.5 µm.

Is it the highest resolution applicable to all the available FOVs?

The highest resolution of 72.5 µm is applicable only on 5x5 FOVs, for all the other 3D acquisition modalities the reference voxel size is 145 µm.

Is the 72.5 µm of voxel size a technical specification hardware or software based?

The voxel size is a technical specification hardware based.

BUY Prime OPG or CBCT Get 1 x X-Mind Unity Wall Mt X-Ray FREE
Ask us about our Special Trade in Offer

Expand your surgical expertise

Highly powerful, reliable and versatile, Piezotome® Cube drastically improves the experience of implant and bone surgery procedures.

Give value to your treatments

The Cube's unmatched performance combined with the practitioner's clinical expertise facilitates accurate, faster, atraumatic and more predictable bone treatments.

Give the best to your patients

Provide compassionate clinical care with effective, predictable outcomes and enhanced healing with significantly less swelling, bleeding, pain and complications.

- Socket preservation⁹
 - Safe for soft tissues
 - Recommended for immediate implant placement
 - No force needed
 - 50% less pain & swelling²
 - 98% less analgesics intake¹
- 1, 2, 9 References available on file



PIEZOTOME

CUBE



Ask Presidential for a demonstration

Servotome II A New Impulse In Electrosurgery

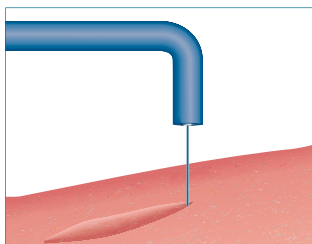
2 YEARS WARRANTY



Experience the benefits of electrosurgery

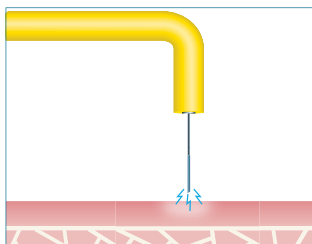
Electrosection

Vaporizing the tissue with the active electrode makes it possible to cut quickly without damaging the edges of the incision.



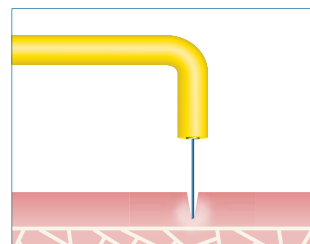
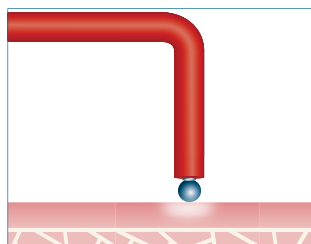
Fulguration

Makes it possible to surface coagulate gingival tissue while protecting the underlying layer.



Coagulation

Concentrating energy at the surface of a massive electrode makes it possible to diffuse the heat to the surrounding tissue and produce instantaneous hemostasis.



SOFTLY Amalgamator



Softly is very stable, extremely quiet, and very easy to clean and maintain. To guarantee totally safe operation, Softly is deactivated when you open the front cover to access the capsule. Softly is made entirely of injection-molded ABS material. It complies with all electrical and mechanical safety standards.

Contact your preferred Acteon dealer for Special Amalgamator Pricing

Acteon Ultrasonic Cleaners

- HYGIENIC Aluminum control panel
- SILENT PEHD cover
- Stainless steel Structure / 2 years guarantee
- Waterproof switch
- ULTRASONICS CLEANER 5L** - 280x180x260mm
- Usable volume 3.2L (PH500N)
- ULTRASONICS CLEANER 5L WITH HEATER**
20-60°C, 280x180x260mm
- Usable volume 3.2L with Heater (PH500CN)



Contact Presidential for Special Ultrasonic Cleaner Pricing 1800 773 743



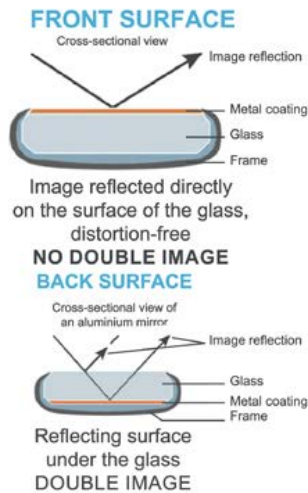
EXPASYL™ EXACT

An EXACT solution for atraumatic gingival retraction

- Atraumatic and wider sulcular opening
- Time saving 1 to 3 minutes
- No risk of damage to the epithelial attachment
- No pain for the patient
- No bleeding/Perfect hemostasis

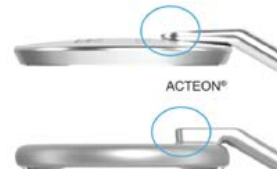


The quality of the diagnosis depends on the quality of the mirror used



Flat and ergonomic soldering

More comfortable for the patient while retracting the cheek



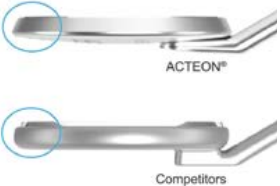
Satined finition

Prevent light reflection in the eyes
Avoid eye fatigue



Optimal crimping

The frame suits the mirror
No sharp edges
No blood and dirt retention



Ris<Kontrol® air/water dental syringe

- Flexible:** More flexible tips and very easy to bend with no shape-memory; keeping the ideal curve
- Dry Air:** Two separate tubes guide air and water from the syringe to the end of the tip, ensuring totally dry air.
- Ecological:** Tips made from entirely recyclable food-quality plastic. Environmentally-friendly – pollution free in the case of combustion
- Safe:** Protection for the patient, the practitioner and assistants. Reduced risk of direct or cross-contamination. No risk of ingestion: safety locking device
- Universal:** Adec, Planmeca, DCI, Kavo, Sirona, Belmont, Morita S12
- Variety of flavours:** Classic White (no scent), Classic Blue (no scent), White - Mint, Mandarin - Orange, Black - Liquorice, Green - Aniseed, Purple - Blackcurrant



A-dec ICX Water Bottle Tablets



20% OFF

0.7L (box of 50 tablets)

Save \$21.60!

\$86.50

2.0L (box of 50 tablets)

Save \$32.20!

\$128.80

(while stocks last)

Bio Hygiene - Free Trial!



Free Trial

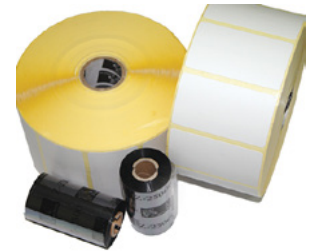
Bevisto Cryl 5L - Dental Chair Cleaner

20% OFF

\$77.40

(while stocks last)

W&H LisaSafe Consumables Pack



RRP \$190

\$82.30

SAVE \$107.70!

Helix Tests



SAVE \$54.50!

RRP \$363.40

Per 250 strips

\$308.90

(while stocks last)

Riskontrol Disposable Syringe Tips



20% OFF

Your choice of flavours - Mandarin or Mint

\$75.70

Save \$18.92 per box of 250
(while stocks last)

Clearview RA Masks



- 5 flavours
- Large Adult, Adult & Paediatric sizes

Save \$10.90 each!

\$98.00 EA

(while stocks last)

ICX Renew



20% OFF

Shock + Refresh Waterline Treatment

1 Application

\$23.45

Save \$5.85

1 Box - 9 Applications

\$203.80

Save \$50.91

A-dec Triplex Tips



20% OFF

23-0872-01
Pack of 5

Save \$19.95!

\$79.85

23-0872-02
Pack of 25

Save \$94.60!

\$378.40

ASK US FOR BULK DISCOUNTS AVAILABLE ON NEW SURGERY SETUP ORDERS!

Download our Consumables Catalogue, and email your consumables shopping list to orders@presidential.com.au



Synea Fusion & Vision Promotion



**BUY 2
GET 1
FREE!!***

**BUY 3
GET 2
FREE!!***

**ASK US
FOR A
QUOTE &
SAVE!!**

*Can Mix & Match, FREE item is equal to the lowest priced item.

30% OFF S-Max Handpieces



30% OFF **M800L** P1253 **\$1,104**



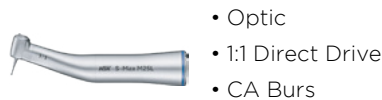
30% OFF **M900L** P1254 **\$1,104**



30% OFF **S-Max Pico** P1140 **\$1,104**



30% OFF **M95L** C1023 **\$1,410**



30% OFF **M25L** C1024 **\$1,082**

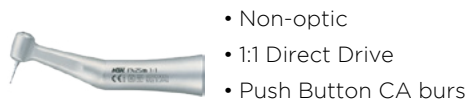


30% OFF **M25** C1027 **\$759**

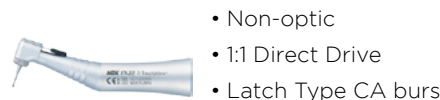
* High Speed connections available for KaVo, W&H, Sirona promo priced at \$1,272.

BUY 4 FX Handpieces and GET 1 FREE

BUY 2 Ti-Max Z990 / Z890 / Z Micro and GET 1 FREE



FX25m C1052001 **\$462**



FX22 C1129091 **\$279**



Z990L PA23730001 **\$1,981**

Call us for a quote on your required handpiece models today!



Luke Williams
0421 493 876
NSW/ACT/VIC



Lee O'Bryan
0427 758 650
Greater Sydney



Gezanne d'Assonville
0423 886 473
Queensland



Michelle De Blasis
0422 391 596
Victoria/Tasmania

