



presidential

2022 Q3

Specials

July - September 2022

**ORDER
NOW, PAY
LATER!***

**Instant asset
write-off up
to \$150K!**

**Save
\$9,155
on qualifying
chair
packages***



presidential
dental | medical | veterinary



Luke Williams
0421 493 876
NSW/ACT/VIC



Lee O'Bryan
0427 758 650
Greater Sydney



Gezanne d'Assonville
0423 886 473
Queensland

W&H Handpiece Specials



Minimum 30% off RRP on Synea Vision & Fusion Handpieces

**Buy 3-5
handpieces
and earn an
additional 10% off
the promo price!**

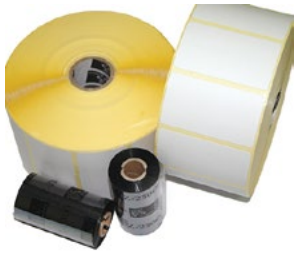
**Purchase 5+,
get an extra
15% off the
promotion price!**

Forever young.
synea ^{years} 20



Multiflex and NSK connections
also available as a special order

W&H LisaSafe Consumables Pack



RRP \$145

\$82.30

SAVE \$62!

Clearview RA Masks



- 5 flavours
- Large Adult, Adult & Paediatric sizes

SPECIAL PRICING!

\$108.90^{EA} (while stocks last)

A-dec ICX Water Bottle Tablets



20% OFF

0.7L (box of 50 tablets)

Save \$19.60!

\$78.40

2.0L (box of 50 tablets)

Save \$29.20!

\$116.80

(while stocks last)

ASK YOUR EQUIPMENT SPECIALIST ABOUT A DISCOUNTED SURGERY SETUP CONSUMABLES PACKAGE WITH YOUR NEW EQUIPMENT

Durr Suction Cannulas



BUY 1 PACK & GET 50% OFF 2ND PACK

Riskontrol Disposable Syringe Tips



20% OFF

Your choice of flavours - Mandarin or Mint

\$67.35

Save \$16.80 per box of 250 (while stocks last)

Helix Tests



20% OFF

Per 250 strips

Save \$69.20!

\$276.90

(while stocks last)

A-dec Triplex Tips



20% OFF

23-0872-01
Pack of 5

\$80.65
SAVE \$20.15!

23-0872-02
Pack of 25

\$343.20
SAVE \$88.80!

Bio Hygiene - Free Trial!



Free Trial

Bevisto Cryl 5L - Dental Chair Cleaner

20% OFF

\$77.40

(while stocks last)

Download our Consumables Catalogue, and email your consumables shopping list to orders@presidental.com.au



A-dec 500 - Traditional

- A-dec 500 chair with Lever Headrest
- Sewn Upholstery - CAMPFIRE colour
- Traditional delivery system with fibre-optics module, 2 x fibre-optics tubings, NLZ Electric Motor, Deluxe Plus Touchpad, Standard Size Tray and Holder
- Newtron Scaler built-in kit, with 3x scaler tips
- USB Powered Hub
- Assistant Suction and Instrumentation
- Cuspidor and Support Centre
- Neovo Medical Grade Screen - 22"
- 482 monitor mount
- Radius-Style LED dental light
- 521/522/NBR Doctor and Assistant Stools
- W&H Rotoquick high speed coupling

SAVE
\$19,966

RRP \$80,310
SPECIAL PRICE:

\$60,344



**Image for illustration purposes only*

A-dec 500 - Continental

- A-dec 500 chair with Lever Headrest
- Sewn Upholstery - PARROT colour
- Continental delivery system with fibre-optics module, 2 x fibre-optics tubings, NLZ Electric Motor, Deluxe Plus Touchpad, Standard Size Tray and holder
- Safelec Newtron Scaler built-in kit (non-LED)
- Assistant Suction and Instrumentation
- Cuspidor and Support Centre
- Neovo Medical Grade Monitor
- 482 Monitor Mount
- Radius-style LED Dental Light
- 521/522 Doctor & Assistant Stools
- EP Valve & adaptor
- Sopro 717 Camera & Chair-integrated dock

SAVE
\$25,637

RRP \$94,485
SPECIAL PRICE:

\$68,812



**Image for illustration purposes only*

A-dec 500 - Traditional

- A-dec 500 chair with Lever Headrest
- Sewn Upholstery - EBONY colour
- Traditional delivery system with fibre-optics module, 2 x fibre-optics tubings, NLZ Electric Motor, Deluxe Plus Touchpad, Large Size Tray and Holder
- Newtron Scaler built-in kit, with 3x scaler tips
- USB Powered Hub
- Assistant Suction and Instrumentation
- Cuspidor and Support Centre
- Neovo Medical Grade Screen - 22"
- 482 monitor mount
- Radius-Style LED dental light
- 521/522/NBR Doctor and Assistant Stools
- W&H Rotoquick high speed coupling
- EP valve & adaptor
- Sopro 717 First Camera and Chair-integrated Mini-dock

SAVE
\$25,615

RRP \$93,342
SPECIAL PRICE:

\$67,727



**Image for illustration purposes only*

A-dec 400 - Traditional

- A-dec 400 chair with Lever headrest
- Sewn Upholstery - GRANITE colour
- Traditional delivery system with fibre-optics module, 1 x fibre-optics tubings, NLZ Electric Motor, Deluxe Touchpad, Standard Size Tray and Holder
- Newtron Scaler built-in kit, with 3x scaler tips
- Assistant Suction and Instrumentation
- Cuspidor and Support Centre
- Neovo Medical Grade Screen - 22"
- 482 monitor mount
- Radius-Style LED dental light
- 421/422 Doctor and Assistant Stools
- EP valve & adaptor
- W&H Rotoquick Highspeed Coupling
- Sopro 717 First Camera and Chair-integrated Mini-dock

SAVE
\$21,108

RRP \$74,500
SPECIAL PRICE:

\$53,391



**Image for illustration purposes only*

ORDER NOW FOR NEXT SHOWROOM PACKAGE RELEASE - JAN 2022

PLEASE CALL 1800 773 743 TO BOOK YOUR SHOWROOM APPOINTMENT AT THE NEWCASTLE OR SYDNEY FACILITIES

A-dec 400 - Traditional

- A-dec 400 chair with Lever headrest
- Sewn Upholstery - SORBET colour
- Traditional delivery system with fibre-optics module, 2 x fibre-optics tubings, NLZ Electric Motor, Deluxe Touchpad, Standard Size Tray and Holder
- EMS No Pain Scaler built-in kit, with 3x scaler tips
- Assistant Suction and Instrumentation
- Cuspidor and Support Centre
- Neovo Medical Grade Screen - 22"
- 381 monitor mount
- Radius-Style LED dental light
- 421/422 Doctor and Assistant Stools



SAVE \$15,955

RRP \$63,822
SPECIAL PRICE:

\$47,866

**Image for illustration purposes only*

A-dec 300 Radius - Traditional

- A-dec 300 Radius chair with Knob headrest
- Seamless/FORMED Upholstery - SKY BLUE colour
- Traditional delivery system with fibre-optics module, Fibre-optic high speed line, Slow speed line with fibre-optic NLZ electric motor, Deluxe touchpad, Standard size tray and holder
- Satelec Newtron scaler built-in kit with 3x scaler tips
- Assistant Suction and Instrumentation
- EP valve and adaptor
- Cuspidor and Support centre
- Neovo Medical Grade Screen - 22"
- 381 Monitor mount
- 572L Radius-style LED dental light
- 421/422 Doctor and Assistant stools



SAVE \$14,339

RRP \$57,596
SPECIAL PRICE:

\$43,197

**Image for illustration purposes only*

A-dec 300 - Pedestal

- A-dec 300 Chair with Knob Headrest
- Seamless/FORMED Upholstery - SKY BLUE colour
- Traditional Delivery System with 1 x fibre-optic tubing
- Floorbox
- NLZ Electric Motor with fibre-optic tubing, Deluxe Touchpad,
- Standard Size Tray and Holder
- Satelec Newtron Scaler built-in kit, with 1x scaler handpiece and 3 x tips
- 353 Assistant Suction and Instrumentation
- 363 Cuspidor and Support Centre
- A-dec LED dental light, chair-mounted
- 381 Monitor Mount and Neovo Medical Grade 22" Screen
- Dr and Assistant Stools



SAVE \$13,572

RRP \$54,289
SPECIAL PRICE:

\$40,717

**Image for illustration purposes only*

A-dec 300 - Pedestal

- A-dec 300 Chair with Knob Headrest
- Seamless/FORMED Upholstery - SKY BLUE colour
- Traditional Delivery System with 1 x fibre-optic tubing
- Floorbox
- NLZ Electric Motor with fibre-optic tubing, Deluxe Touchpad,
- Standard Size Tray and Holder
- Satelec Newtron Scaler built-in kit, with 1x scaler handpiece and 3 x tips
- 353 Assistant Suction and Instrumentation
- 363 Cuspidor and Support Centre
- A-dec LED dental light, chair-mounted
- 381 Monitor Mount and Neovo Medical Grade 22" Screen
- Dr and Assistant Stools



SAVE \$13,572

RRP \$54,289
SPECIAL PRICE:

\$40,717

**Image for illustration purposes only*

ORDER NOW FOR NEXT SHOWROOM PACKAGE RELEASE - JAN 2022

PLEASE CALL 1800 773 743 TO BOOK YOUR SHOWROOM APPOINTMENT AT THE NEWCASTLE OR SYDNEY FACILITIES

MelaTherm 10

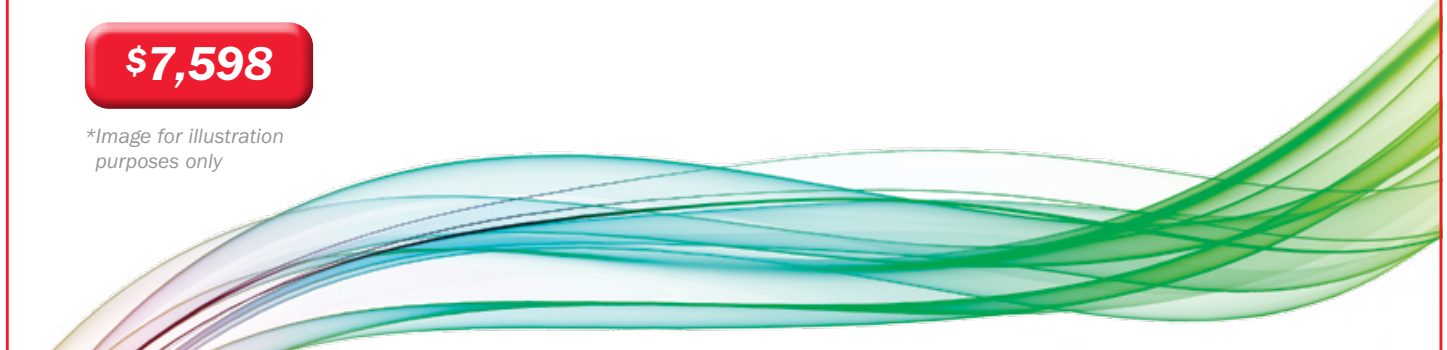
SAVE
\$11,397

RRP \$18,995
SPECIAL PRICE:

\$7,598

**Image for illustration purposes only*

MELAG
competence in hygiene



Already included **ACTIVE DRYING**
Important for instrument protection

Already included **INTEGRATED DOCUMENTATION**
Either via a CF card or network at no extra price

Already included **INTEGRATED METERING MODULE**
For economical metering of the fluid process agents and thorough cleaning at no extra cost

Already included **INTEGRATED PROCESS AGENT INTAKE**
For the space-saving, ergonomic storage of agents



The elegant design assists the time-saving treatment. Instruments for up to 40 patients can be cleaned, disinfected and dried in a single treatment procedure.

PLEASE CALL 1800 773 743
TO BOOK YOUR SHOWROOM APPOINTMENT
AT THE NEWCASTLE OR SYDNEY FACILITIES

**ASK US ABOUT
ADDITIONAL
SHOWROOM
EQUIPMENT OFFERS
- MASSIVE SAVINGS
ON OFFER!**

X-Mind® Prime Pan

2D Wall-mounted version 110-240V SKU: W1200001

OrthoPantoTomograph (OPG), with one CCD Pan 2D sensor for panoramic imaging.

- 24 adult and child panoramic programs
- Innovative wall-mounted system
- Face-to-face positioning
- Lightest unit on the market
- Installation under an hour by one single technician



1 x Ref W1200001 X-Mind Prime Pan PLUS Wall Switch at no/charge PLUS Extra 2 year Warranty

\$27,500

SAVE \$5,932

**Image for illustration purposes only*



X-Mind® Prime Pan 3D

3D Wall-mounted version 110-240V SKU: W1200005

3D Wall-mounted version 110-240V + WS + Monitor OrthoPantoTomograph (OPG), with one CMOS sensor used for Pan and 3D.

- 54 adult and child 2D and 3D programs
- Delivered with AIS 3D app and powerful treatment planning tools
- 4 FOV : 50x50, 85x50, 85x93 and 120x100 mm
- Innovative wall-mounted system
- Face-to-face positioning
- Installation under an hour by one single technician



1 x Ref W1200005 X-Mind Prime Pan/CBCT PLUS Wall Switch at no/charge PLUS Extra 2 year Warranty

\$67,690

SAVE \$18,489

**Image for illustration purposes only*



PLEASE CALL 1800 773 743
TO BOOK YOUR SHOWROOM APPOINTMENT
AT THE NEWCASTLE OR SYDNEY FACILITIES

**ASK US ABOUT
ADDITIONAL
SHOWROOM
EQUIPMENT OFFERS
- MASSIVE SAVINGS
ON OFFER!**

Which solution is right for you?



**NEW
A-dec
500**
A legend
redefined



**A-dec
400**
Accessible.
Strong.
Style



**A-dec
300**
Smart.
Sensible.
Simple

With A-dec 300, 400, 500 chairs* receive a FREE Sopro 717 intra-oral camera. SAVE \$8,800!

Optional Upgrade to SoproLIFE or SoproCARE intra-oral camera for just \$2,000!

*Subject to qualifying chair package configurations

A-DEC STOOLS SPECIAL

400 series stools \$3,150 when ordering a qualifying chair package



500 series stools \$4,250 when ordering a qualifying chair package

Conditions: *Qualifying chair packages that include chair, upholstery, doctor's delivery system, assistant suction arm, dental light and stools. Chair package images are for illustration purposes only. All FREE products values are calculated at RRP including GST. FREE product offers cannot be used in conjunction with any other offer.

A-dec 360™

MAINTENANCE

Third Hand HVE Holder

- A hands-free solution for extra-oral aerosol capture
- Allows access to within 1" of oral cavity
- Flexible arm for easy positioning



BONUS OFFER

Aerosol Cannula
(Pack of 4)
DUR-0700-058-50

Dental Water Line Digital Water Tester

- Instant Chairside solution for dental waterline monitoring
- Monitor your Dental Unit Water and Surgery Surfaces
- Rapid, Reliable and Easy to Use



CALL PRESIDENTAL FOR A WATER TEST TODAY!

ICX Renew

Fast-acting ICX Renew liquid shock treatment removes odor and foul-tasting bacteria in dental unit waterlines. Just mix the two solutions together into an empty water bottle, run through the lines, and soak overnight. After completing the shock treatment, flush the lines with water and resume your regular use.

- Penetrates and removes the buildup of odor and foul-tasting bacteria
- Blue color lets you know the solution is hard at work in the waterlines
- Non-corrosive and gentle on equipment
- Will not corrode or clog waterlines
- Odorless formula



BUY 5 BOXES of ICX tablets with ICX Renew and GET 10% off

SAVE \$23.10

Aerosol Cannula

- An easy solution for maximum aerosol absorption
- Twice the uptake of aerosol compared to conventional suction cannulas
- Reduces germ-laden aerosol directly in the patient's mouth – up to 100%!



BUY 1 PACK GET 50% OFF SECOND PACK

Aerosol Cannula (Pack of 4)
DUR-0700-058-50,
Universal Cannula Protect (Pack of 5) DUR-0700-059-50,
Universal Cannula (Pack of 5) DUR-0700-055-50

PSPPIX²

- Easy to use
- Small foot print
- Covers 10 surgeries
- Superior image quality



\$11,999
SAVE \$2,176!

Sensors U-Sense

- Instant display in only 3 seconds
- Rounded corners
- "Shake & Wake up" quick start activation - HD version



SAVE 15%

Intra oral cameras

- Improve Communication
- Increase Treatment Acceptance
- Educate your patients

SOPRO CARE



SOPRO LIFE



FREE DOCK
WITH EACH CAMERA

SOPRO CARE \$6,999
SOPRO LIFE \$6,999

SAVE \$5,021!

X-Mind Unity

- Integrates digital sensors
- Easy installation
- Proven reliability
- Dosage tracking

X M I N D
unity



\$7,011
SAVE \$779

X-Mind DC

- Safe exposure levels
- High quality images
- Easy to navigate and position

X M I N D DC



\$5,643
SAVE \$627



**DIGITAL IMAGING
SOLUTIONS**



A-dec 200

Proven • Efficient • Smooth

\$26,901

SAVE \$2,989

Package Includes:

- Chair with Seamless upholstery
- Support centre with cuspidor
- Delivery System with integrated deluxe touchpad
- Assistants instrumentation and touchpad
- NEW 300 LED light

A-dec 200 is a great value package, complete with new features for added accessibility and comfort.

All from the people who build the most dependable dental equipment in the world, A-dec.



A hands-free solution for extra-oral aerosol capture.

A-dec® Third-Hand HVE Holder

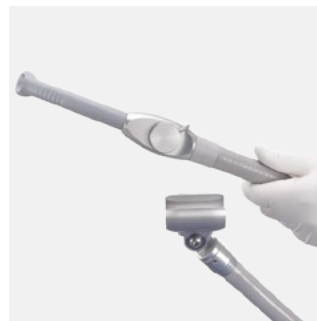
Efficiency and safety come together in a practical solution for aerosol capture. The **A-dec Third-Hand HVE Holder** makes it easier to practice two-handed dentistry while maintaining essential aerosol control. The flexible arm securely positions the HVE tip to within 1" of the oral cavity—delivering precise, effortless aerosol capture while keeping hands free for scalers and instruments. It's a simple, affordable way to bring more functionality to your surgery.



Glide bar clamp attaches securely to your A-dec chair with no special tools needed.



Flexible design accommodates patients of all sizes, for easy entry and exit from chair.



From hands-free to hands-on: Simply lift the HVE out of the holder for direct control.



Easily adjusts for right- or left-handed clinicians, and four-handed procedures.

PRODUCT FEATURES

- Provides hands-free aerosol capture with existing 15mm or 11mm HVE
- Allows access to within 1" of oral cavity
- Flexible arm for easy positioning
- Radius design for right- and left-handed users
- Accommodates patients of all sizes
- Fits most A-dec dental chairs
- Fast and easy to install



**BUY
A-DEC 3RD
HAND, GET
FREE DURR
CANULA
4
PACK!**

**BUY
CANISTER &
GET 50% OFF
REFILLS!**



The Durr Hygiene - FD-366 range has been tested against a wide array of viruses including:

- ✓ **Coronavirus (SARS-CoV-2)**
- ✓ **Vacciniavirus**
- ✓ **Adenovirus**
- ✓ **Murine Norovirus**
- ✓ **Poliovirus**
- ✓ **HBV**
- ✓ **HCV**
- ✓ **HIV**

Maximize Aerosol Capture with the Durr Suction Cannula range

Durr Aerosol Cannula

Rotatable protective shield

Particularly effective – up to 2x more aerosol uptake

Safe protection against infection

Reduces germ-laden aerosol directly in the mouth of the patient – with up to 100% reduction possible!



The protective shield on the cannula tip can be freely rotated. This enables particularly effective suction of spray powder.

**BUY 1 GET
50% OFF
2ND PACK!**



* 1. Receive 20% off the Durr Suction Cannula Range (Durr Aerosol Cannula, Durr Universal Cannula, and Durr Universal Protect Cannula). When you purchase Durr FD-366 Sensitive Wipes in the same transaction, receive an additional 10% off to Durr Suction Cannula Range (Durr Aerosol Cannula, Durr Universal Cannula, and Durr Universal Protect Cannula). This offer cannot be used in conjunction with any other offers or promotions. Offer ends 31st March 2021.



LISA

LISA TRACEABILITY PACKAGE

- › Lisa 22 I
- › LisaSafe label printer RT200
- › Consumable kit for LisaSafe printer
- › Barcode scanner

\$ 16,789.00
save up to **\$ 2,335.00**

FREE
LISASAFE PRINTER/
SCANNER KIT WITH
LISA AUTOCLAVE!
SAVE
\$2,335!



EliSense

Cycle status information, temperature information and all information to optimize both workflow and output at a glance.



EliTrace

With EliTrace you will not only know exactly which cycles have been carried out at what time and date, but also which instruments were sterilized within this cycle.



W&H Steri App

W&H Steri App is an advanced smartphone and tablet application that allows to control and monitor the status of the autoclaves in your dental clinic. Moreover, the app is able to scan and track dental instruments.



2 in 1

ULTRASONIC SCALING × POWDER MAINTENANCE



For oral hygiene specialists.

Varios Combi Pro

COMPLETE ORAL CARE

Call your
Presidential
equipment
specialist
for a demo!



Varios Combi Pro BUNDLE PACK



1 Varios Combi Pro Basic Set comprising:

- PROPHY-Handpiece with 60° Nozzle
- PROPHY-Hose
- PROPHY-CHAMBER
- FLASHpearl (5 pieces x 15g sachets)
- Maintenance kit
- VA2LUX-Handpiece
- VA2LUX-Hose
- 3 Scaling tips
- Sterilisation case
- Irrigation bottle (400mL)
- Foot control

+



1 Varios Combi Pro Perio Set comprising:

- PERIO-CHAMBER
- PERIO-Hose
- PERIO-Handpiece
- Perio-Mate Nozzle tip
- Perio-Mate Nozzle tip remover
- Perio-Mate powder



+ 1 EXTRA
Varios2 VA2-LUX-HP Scaler
Optic Handpiece



+ 1 EXTRA
Perio Handpiece



+ 2 EXTRA
Proply Handpieces



+ 1 EXTRA
Perio Mate Disposable Nozzle
Tip (Pack of 40)



+ 1 EXTRA
Box of FLASHpearl
(4 bottles)



+ 1 EXTRA
Box of Perio Mate
Powder (2 bottles)



**BUY
BUNDLE
GET FREE
iCart**

+ FREE
iCart Duo for VCP
with Water Bottle Set

MODEL	ORDER CODE	SALE PRICE	SAVE
Varios Combi Pro Bundle offer	VCP BUNDLPKG	\$12,751	\$1,230
Varios Combi Pro iCart	S9090V	FREE	\$2,535

**Total
Savings
\$3,765**

Varios Combi Pro

Varios Combi Pro Basic Set

- PROPHY-Handpiece with 60° Nozzle
- PROPHY-Hose
- PROPHY-CHAMBER
- FLASHpearl (5 pieces x 15g sachets)
- Maintenance kit
- VA2LUX-Handpiece
- VA2LUX-Hose
- 3 Scaling tips
- Sterilisation case
- Irrigation bottle (400mL)
- Foot control

MODEL	ORDER CODE	SALE PRICE	SAVE
Varios Combi Pro Basic Set	Y1004194	\$6,285 <small>RRP-\$7,856</small>	\$1,571



Varios Combi Pro Perio Set

Additional to the Basic set, the Perio Set allows safe subgingival treatment for a range of procedures.

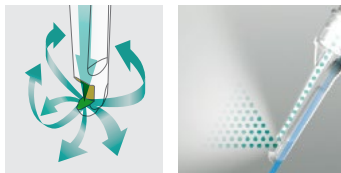
Varios Combi Pro Perio Set

- PERIO-CHAMBER
- PERIO-Hose
- PERIO-Handpiece
- Perio-Mate Nozzle tip
- Perio-Mate Nozzle tip remover
- Perio-Mate powder

MODEL	ORDER CODE	SALE PRICE	SAVE
Varios Combi Pro Perio Set	Y1003042	\$2,413 <small>RRP-\$2,839</small>	\$426



The powder spray gently cleans subgingival areas



Gentle on soft tissue

Separating powder and water during application prevents periodontal damage. Powder flow is directed in all directions to remove subgingival plaque.

Automatic spray force adjustment

Connecting the subgingival chamber automatically lowers the spray pressure to 20% of the supragingival level to guarantee safe operation during subgingival application.



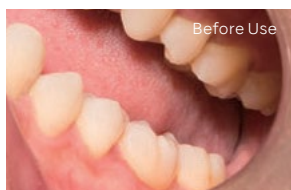
Safe plastic nozzle

Because the nozzle tip is flexible, it can follow tooth contours and is easy to insert into pockets thereby minimising patient discomfort. The material is semi-transparent to help with visibility. The nozzle tips are sterile and individually packaged so they are ready to use.

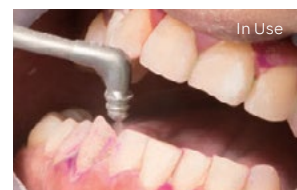
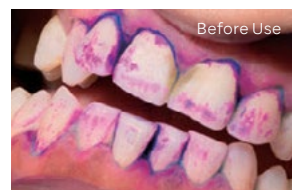
Wide range of applications

Applications range from quick biofilm removal to cleaning around dental implants and periodontal pockets. With the nozzle tip removed, clinicians can remove plaque from subgingival pockets of up to 3 mm.

Biofilm removal inside periodontal pockets



Interdental and gingival margin plaque removal



High Speed Handpieces

S-Max and Ti-Max Series



MODEL **Ti-Max Z800L**
ORDER CODE P1110

- Optic
- 23W Power
- Miniature head

RRP	BUY 1
\$1,981	\$1,684
BUY 2	BUY 3
\$1,585	\$1,486



MODEL **Ti-Max Z900L**
ORDER CODE P1111

- Optic
- 26W Power
- Standard head

RRP	BUY 1
\$1,981	\$1,684
BUY 2	BUY 3
\$1,585	\$1,486



MODEL **S-Max M800L**
ORDER CODE P1253

- Optic
- 23W Power
- Miniature head

RRP	BUY 1
\$1,381	\$1,174
BUY 2	BUY 3
\$1,105	\$1,036



MODEL **S-Max M900L**
ORDER CODE P1254

- Optic
- 26W Power
- Standard head

RRP	BUY 1
\$1,381	\$1,174
BUY 2	BUY 3
\$1,105	\$1,036



MODEL **Ti-Max X450L**
ORDER CODE P1078

- Optic
- Rear-exhausted 45° head
- 21W Power

RRP	BUY 1
\$1,677	\$1,425
BUY 2	BUY 3
\$1,342	\$1,258



MODEL **S-Max Pico**
ORDER CODE P1140

- Optic
- 8W Power
- Ultra Mini Head

RRP	BUY 1
\$1,381	\$1,174
BUY 2	BUY 3
\$1,105	\$1,036



Contra Angle Handpieces

S-Max and Ti-Max Series



MODEL **Ti-Max Z95L**
ORDER CODE C1034SW

- Optic
- 1:5 Speed Increasing
- Switch Spray function
- For FG Burs

RRP	BUY 1
\$2,121	\$1,803
BUY 2	BUY 3
\$1,697	\$1,591



MODEL **Ti-Max Z45L**
ORDER CODE C1064

- Optic
- 1:4.2 Speed Increasing
- Switch Spray function
- 45° Head
- For FG burs

RRP	BUY 1
\$2,263	\$1,924
BUY 2	BUY 3
\$1,810	\$1,697



MODEL **Ti-Max Z85L**
ORDER CODE C1062

- Optic
- 1:5 Speed Increasing
- Single Spray
- For FG Burs

RRP	BUY 1
\$2,221	\$1,803
BUY 2	BUY 3
\$1,697	\$1,591



MODEL **Ti-Max Z25L**
ORDER CODE C1038

- Optic
- 1:1 Direct Drive
- Single spray
- For CA burs (ø2.35)

RRP	BUY 1
\$1,491	\$1,267
BUY 2	BUY 3
\$1,193	\$1,118



MODEL **Ti-Max Z24L**
ORDER CODE C1126001

- Optic
- 1:1 Direct Drive
- Single spray
- For CA burs (ø2.35)

RRP	BUY 1
\$1,491	\$1,267
BUY 2	BUY 3
\$1,193	\$1,118



MODEL **S-Max M95L**
ORDER CODE C1023

- Optic
- 1:5 Increasing
- Quattro Spray
- For FG burs (ø1.6)

RRP	BUY 1
\$1,763	\$1,499
BUY 2	BUY 3
\$1,410	\$1,322



MODEL **S-Max M25L**
ORDER CODE C1024

- Optic
- 1:1 Direct Drive
- Single Spray
- For CA burs

RRP	BUY 1
\$1,353	\$1,150
BUY 2	BUY 3
\$1,082	\$1,015



MODEL **S-Max M15L**
ORDER CODE C1025

- Optic
- 4:1 Reducing
- Single Spray
- For CA burs

RRP	BUY 1
\$1,647	\$1,400
BUY 2	BUY 3
\$1,318	\$1,235

Non-optic options available. Other connections offered for KaVo, Sirona, W&H, Bien Air.

Guaranteed protection. Certified excellence.

The industry leader in infection control for 30 years.

Our proprietary, best-in-class Clean Head System prevents contaminants from entering the handpiece, while our advanced Non-Retraction Valve protects against cross-contamination. NSK sets the standard for safety and protection with the world's most technologically advanced, award-winning handpiece design.



Ti-Max Nano Handpieces



MODEL **nano95LS**
ORDER CODE C1099

- 1:5 Increasing
- Optic
- Quattro spray
- For FG burs (ø1.6)
- Max speed: 200,000 min⁻¹

RRP	BUY 1
\$1,909	\$1,623
BUY 2	BUY 3
\$1,527	\$1,432



MODEL **nano25LS**
ORDER CODE C1100

- 1:1 Direct Drive
- Optic
- Single spray
- For FG burs (ø2.35)
- Max speed: 40,000 min⁻¹

RRP	BUY 1
\$1,342	\$1,141
BUY 2	BUY 3
\$1,074	\$1,007



MODEL **nano15LS**
ORDER CODE C1101

- 4:1 Reduction
- Optic
- Single spray
- For FG burs (ø2.35)
- Max speed: 10,000 min⁻¹

RRP	BUY 1
\$1,907	\$1,621
BUY 2	BUY 3
\$1,526	\$1,430

A totally new installation style only from NSK



Specification comparison

		Our existing model	NLZ • NLZ E
Motor specs	Number of rotations	2,000-40,000 min ⁻¹	100-40,000 min⁻¹
	Max torque	3.4 Ncm	4.2 Ncm
Corresponding model to endodontic mode		-	○ (NLZ E)

120%
High Torque

NLZ-E

Electric Micromotor

PORTABLE SYSTEM WITH ENDO FUNCTION

+ FREE NLZ Endo Handpiece

- Easily convert air driven handpieces to electric with the all new NLZ-E.
- Correctly transmit reciprocating actions for a smooth endodontic treatment.
- New NLZ Endo 6:1 reciprocating handpiece.
- Endo torque calibration function – This function measures the 'no-load' current values and corrects the torque accordingly, resulting in greatly enhance safety in endodontic treatment.
- Contra-Check Function helps detect abnormalities caused by deterioration of the contra-angle handpiece and insufficient maintenance before use.

MODEL	ORDER CODE	RRP	PROMO
NLZ-E 230 Portable	Y1500361	\$5,501	
NLZ Endo Handpiece Non-optic	C1130	\$893	FREE



NLZ E

FREE
with purchase of NLZ-E System



MODEL	ORDER CODE	RRP	PROMO
NLZ S230 Portable	Y1500360	\$4,753	
FX57m Handpiece Optic	C1054001	\$508	FREE

FREE
with purchase of NLZ System



iCare C2/C3

Handpiece oiling and maintenance system

- Pre-set solution volume based on handpiece type
- Thorough cleaning and lubrication with simple operation
- Chuck cleaning and lubricating function
- Purging mode removes excess oil
- Integrated 1.2 litre oil tank reduces burden of refill

MODEL	ORDER CODE	SALE PRICE	SAVE
iCare C2	Y1002787	\$4,117 <small>RRP-\$5,489</small>	\$1,372
<ul style="list-style-type: none"> • Standard System Complete • 2 rotation ports • 2 non-rotation ports • 230V • Requires 2 adaptors 			
iCare C3	Y1002788	\$4,397 <small>RRP-\$5,863</small>	\$1,466
<ul style="list-style-type: none"> • Standard System Complete • 3 rotation ports • 1 non-rotation port • 230V • Requires 3 adaptors 			



Pana Spray offer

Buy 1 box of 6,
get 1 box of 6
Pana Spray Plus FREE



Pana Spray Plus

Cleaning and lubrication

- For high and low speed handpieces, and air motors
- 500 mL • Alcohol-contained lubricant • Pack of 6 cans



MODEL	ORDER CODE	SALE PRICE	SAVE
Pana Spray Plus Pack	Y900630	\$269 <small>RRP-\$538</small>	\$269

MOBILE DENTISTRY

VIVA ace

Mobile Dentistry System

Purchase the VIVAace Mobile Dentistry Unit and get a M95L Redband handpiece, a M25L Blueband handpiece and a iso-E-Lux transillumination diagnostic probe FREE!

MODEL	ORDER CODE	RRP
VIVA ace complete set	Y1004228	\$21,060

S-Max M95L Handpiece

- Optic • 1.5 Increasing • Quattro spray • FG Burs

MODEL	ORDER CODE	RRP	PROMO
S-Max M95L	C1023	\$1,632	FREE



S-Max M25L Handpiece

- Optic • 1.1 Direct Drive • Single spray • CA Burs

MODEL	ORDER CODE	RRP	PROMO
S-Max M25L	C1024	\$1,632	FREE



iso E-Lux Probe

- E-Type Optic Motor Connection • Glass Fiber Optics • Stainless Steel Body

MODEL	ORDER CODE	RRP	PROMO
iso E-Lux Probe	Z1265	\$880	FREE



I routinely use my VIVA ace in providing dental services for my patients in Aged Care Facilities or who are housebound. It is lightweight, quiet and is literally Plug and Play. I love it. //



Dr Mark Wotherspoon
BDSc (UWA), Principal Dentist -
Dentist To Your Door, CSU -Adjunct
Senior Lecturer, Dr Mark's Hygienic -
Inventor

VIVA ace
MOBILE DENTISTRY SYSTEM

Bonida Intra-Oral Cameras



ALPHA HD with Measuring Aid
BHA18-100

- High definition camera
- Robust metal connection point
- USB connection
- Measuring aid feature

Alpha HD Dual Camera with Measuring Aid
BDA18-100

- Additional resolution with dual camera lens

Clarovision Wireless Camera
CLARO-1

- Wireless intra-oral camera
- Robust metal connection point
- USB connection

Clarovision Wireless Camera with Plaque Detection
CLARO-2

- Additional white & blue LEDs for Plaque Detection mode

CALL US
FOR A PRICE!
1800 773 743

Preva Intra-Oral X-rays

Preva Intra-Oral X-ray
PE7015

- High definition – 0.4mm focal point
- Robust reputation for reliability
- Short, Standard and Long arm options
- Single Stud and Dual Stud wall plate options available
- Optional Preva Plus – allows integration with ClearVision™ sensor



EXTRAORAL RADIOLOGY

X MIND prime 3D

X-MIND® PRIME PAN 3D

3D Wall-mounted version 110-240V
SKU: W1200005

3D Wall-mounted version 110-240V
+ WS + Monitor
OrthoPantoTomograph (OPG),
with one CMOS sensor used for Pan and 3D.

- 54 adult and child 2D and 3D programs
- Delivered with AIS 3D app and powerful treatment planning tools
- 4 FOV : 50x50, 85x50, 85x93 and 120x100 mm
- Innovative wall-mounted system
- Face-to-face positioning
- Installation under an hour by one single technician

**2+2 YEARS
EXTENDED
WARRANTY**



X MIND prime 2D

X-MIND® PRIME PAN

2D Wall-mounted version 110-240V
SKU: W1200001

OrthoPantoTomograph (OPG),
with one CCD Pan 2D sensor for
panoramic imaging.

- 24 adult and child panoramic programs
- Innovative wall-mounted system
- Face-to-face positioning
- Lightest unit on the market
- Installation under an hour by one single technician



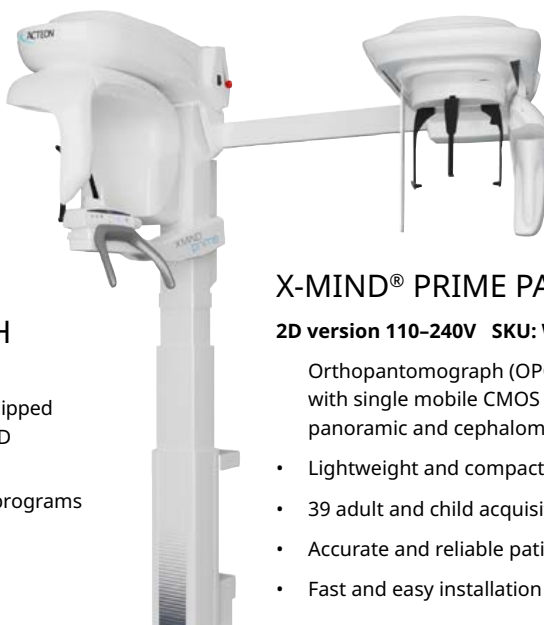
X-MIND® PRIME PAN 3DCEPH

3D version 110-240V SKU: W1200010

Orthopantomograph (OPG), 110-240V equipped
with a CMOS PAN/3D panel and a CMOS 2D
CEPH sensor.

- 69 adult and child 2D PAN/CEPH and 3D programs
- Delivered with AIS 3D app and powerful treatment planning tools 5 FOV : 50x50, 85x50, 85x93 and 120x100 mm
- Accurate and reliable patient positioning
- Fast and easy installation
- Software preinstalled.

**2+2 YEARS
EXTENDED
WARRANTY**



X-MIND® PRIME PAN

2D version 110-240V SKU: W1200009

Orthopantomograph (OPG), 110-240V
with single mobile CMOS sensor for
panoramic and cephalometric imaging.

- Lightweight and compact installation
- 39 adult and child acquisition programs
- Accurate and reliable patient positioning
- Fast and easy installation



ACTEON® Imaging Suite (AIS) Software, for visualization and analysis of 2D and 3D acquisitions and treatment planning. Includes five licenses for 3D app standard, the 3D viewer and implant planning application. Compatible with all 2D and 3D imaging products of the group. Installation and user e-manuals, 2 years standard warranty. Not included: Light.

Purchase any Prime 3D CBCT and you will receive free online CBCT Licensing Course plus Receive 5 Radiology Reports from O-Rad FREE Bonus package valued at \$1,400.00

PIEZOELECTRIC SURGERY IS POWERFUL ENOUGH TO CARRY OUT EXTRACTIONS AT THE SAME SPEED¹ AS ROTARY INSTRUMENTS!

- Socket preservation⁹
- Safe for soft tissues
- Recommended for immediate implant placement
- No force needed
- 50% less pain & swelling²
- 98% less analgesics intake¹

1, 2, 9 References available on file



SAVE
15%

PIEZOTOME

CUBE



For a Free Trial please contact Presidential on 1800 773 743

SOFTLY

Amalgamator

Softly is very stable, extremely quiet, and very easy to clean and maintain. To guarantee totally safe operation, Softly is deactivated when you open the front cover to access the capsule. Softly is made entirely of injection-molded ABS material. It complies with all electrical and mechanical safety standards.



Microprocessor controlled for precise repeatability.

Acteon Ultrasonic Cleaners

- HYGIENIC Aluminum control panel
- SILENT PEHD cover
- Stainless steel Structure / 2 years guarantee
- Waterproof switch
- ULTRASONICS CLEANER 5L** - 280x180x260mm
- Usable volume 3.2L (PH500N)
- ULTRASONICS CLEANER 5L WITH HEATER**
20-60°C, 280x180x260mm
- Usable volume 3.2L with Heater (PH500CN)



Prophy MAX

Combine device with Ultrasonics & Air polisher

Includes Prophy Pen Handpiece, wrench, 250g mint powder, 250g lemon powder, Newtron Handpiece & double footswitch.

Built-in heating system for water - better patient comfort

Transparent drum to hold the powder - easy refilling and perfect visual control

Autoclavable handpiece - easy sterilization

Titanium nozzle - avoids clogging



For a Free Trial please contact Presidential on 1800 773 743

Servotome II A New Impulse In Electrosurgery

SAVE
20%

High frequency Electrosurge F57230 for orthodontics, periodontics & other oral surgery

Perform oral surgery on soft tissue quickly, precisely and safely

Due to the technology evolution associated with the conductive bracelet, 30 watts is sufficient to perform all dental incision and coagulation procedures providing greater safety.

Controlled power

Reliable and reproducible setting

Safer with maximal efficacy

Delivered with a single footswitch, a box with 10 electrodes, a conductive bracelet.



Ris|Kontrol® air/water dental syringe



Riskontrol® tips can be used for all procedures in any workflow/

With the Coronavirus pandemic, hygiene is the most important element for dental practices.

Adopt RISKONTROL® to deliver a good clinical protection:

- 20 times less risk of cross-contamination¹
- Protection for patients, practitioners and assistants
- Universal: adapts to any air/water syringe*
- Dry air – 2 separate water/air tubes leading to better bonding results

1 - Data on file * Only use with Riskontrol Adapters

Ask us about
Promo Pricing
1800 773 743



NEWTRON

P5XS B. LED

Newtron® P5XS B.LED Ref#F62105 with a non-disconnectable footswitch, a power supply, a Newtron® SLIM B.LED handpiece cord, a Newtron SLIM B.LED handpiece with a blue ring, a Newtron® SLIM B.LED white LED ring, a F.L.A.G™ for B.LED (5x 1.5ml) dental plaque discloser, an autoclavable universal wrench, 3 tips (N°1, N°1S, N°H3) and a 300ml tank



NEWTRON® (Satelec) Handpieces

- 1. NEWTRON handpiece** Autoclavable Handpiece: GII 2-Tone (Grey) NEWTRON OEM Ref# **F12281**
- 2. NEWTRON® SLIM B.LED** handpiece with blue LED ring; Compatible with NEWTRON B.LED and NEWTRON XS B.LED devices for use with FLAG fluorescent liquid assistance guide Ref# **F12900**
- 3. NEWTRON Slim B.LED** Handpiece with white LED ring for NEWTRON B.LED, XS B.LED Ref# **F12905**

NEWTRON® Tips - superior ultrasonics for all your procedures

NEWTRON® tips conserve teeth and meet all clinical requirements. NEWTRON tips were thought by dentists for dentists. They will offer you specific solutions, comfort and visibility.

Over 80 different tips, with exclusive and patented designs, alloys and coatings that won't damage the surfaces treated.



PROPHYLAXIS



PERIODONTICS



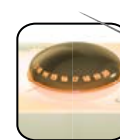
IMPLANT CARE



ENDODONTICS



PROSTHESIS & ESTHETICS



Normal screw thread with SATELEC® tips



Worn screw thread with brand X tips



Broken screw thread with brand X tips

Using non genuine tips may cost you a lot more...

The potential imperfections in compatibility of brand "X" tips, both physical and electronic, may cause risks and prematurely wear equipment.

RISKS FOR PATIENT

- Undesired damage to patient's tissues (enamel, cementum etc.)
- Breakage of tip - leading to possible inhalation of tip fragment by the patient

RISKS FOR EQUIPMENT

- Damage of handpiece due to overheating, consequently leading to shorter product life
- Damage to thread of handpiece

LOSS OF EFFICIENCY

- Tip wear alters its efficiency - where a loss of only 2mm equals 50% decrease in efficiency resulting in prolonged treatment time

EXPASYL™ EXACT

An EXACT solution for atraumatic gingival retraction

- Atraumatic and wider sulcular opening
- Time saving 1 to 3 minutes
- No risk of damage to the epithelial attachment
- No pain for the patient
- No bleeding/Perfect hemostasis

For a Free 5 Pack Sample contact Presidential

One sample pack per practice (Only While Stocks Last)



**Mono Dose
Mono Patient!**
Now in Capsules...

MINILED SUPERCHARGED



Wavelength: 420 - 480 nm

Power: 2,000mW/cm²
Li-Ion battery

Handpieces: anodized aluminium

Delivered with a Mini LED handpiece, a battery, a battery charger, a power supply cord with european plug, a Ø7.5mm opalescent guide and an oval light shield

MINILED ORTHO 2



Wavelength: 420 - 480 nm

Power: 3,000mW/cm²
Li-Ion battery

Handpieces: anodized aluminium

Delivered with a handpiece, a Ø5.5mm opalescent guide, a power supply + 4 plugs, a battery, a battery charger and an oval light shield

**SAVE
30%**
on all Acteon Curing Lights

MINILED STANDARD



Wavelength: 420 - 480 nm

Power: 1,250mW/cm²
Li-Ion battery

Handpieces: anodized aluminium

Delivered with a Mini LED handpiece, a battery, a battery charger, a power supply cord with european plug, a Ø7.5mm opalescent guide and an oval light shield



vatech

Q3 specials



Buy a Vatech
Insight OPG
and receive
50% off
Vatech EzRay Air*
intra-oral x-ray unit



Buy a Vatech
CBCT unit
and receive a
FREE
Vatech EzRay Air*
intra-oral x-ray unit



* Terms and conditions apply

Vatech VSP Phosphor Plate Scanner

Digital scanner with image boards, ergonomically designed, compact and easy to use. It provides high quality images necessary for an accurate and efficient intraoral diagnosis, even in the doctor's office. The device has a built-in 4-inch touchscreen display and allows optimal preview of images. The boards are available in four sizes, thin and flexible, with 100% optimised active display surfaces, allowing reuse over time and maintaining a high quality image. Ethernet cable connection that allows fast image transfer from scanner to PC. Dimensions: 233x141x191 mm, weight 3.3kg. 24 month warranty.

INTRODUCTORY OFFER - ONLY \$8,800!



Vatech 3D Intra-Oral Scanner

EXPAND YOUR DIGITAL WORKFLOW

Quick Scan Time for Workflow Efficiency

- Full arch scans in under 2 minutes from start to finish

Simple and Intuitive Interface for an Improved Scanning Experience

- Clear and intuitive interface for ease of use
- Essential functionality for many treatment plans

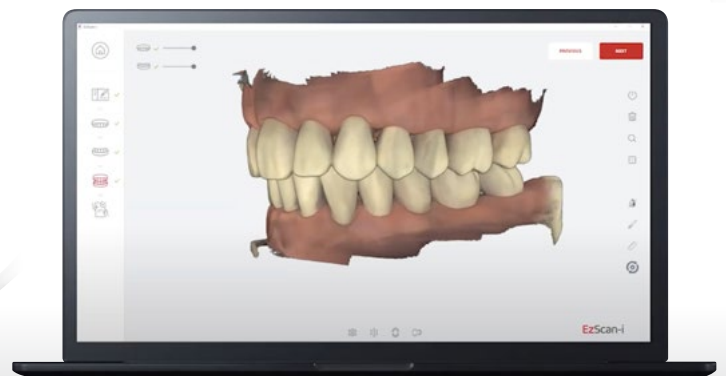
Case Sharing

- EzScan Cloud is an easy-to-use file-sharing module for sharing digital impressions with the lab of your choice

Open Platform with No Continued Fees

- Easy to export to your treatment planning software or to send it to the lab of your choice.
- Maximize your ROI with no continued fees.

EZSCAN AVAILABLE - FROM \$15,950!



Vatech EzSensor Classic

- Ultra-Slim for Easy Positioning
- Patient Oriented Design
- Trustworthy Image

ULTRA-SLIM FOR EASY POSITIONING

Slim, CMOS ensures that patients are as comfortable as possible.

PATIENT ORIENTED DESIGN

Rounded corner design allows maximum comfortable placement against soft tissue.

TRUSTWORTHY IMAGE

EzSensor Classic provides the image for accurate diagnosis and treatment planning.



Vatech EzSensor Soft

vatech

- The Smallest Pixel provides consistently higher resolution and clearer images for accurate diagnosis and treatment planning.
- Drop Resistant – Durable Sensor Materials

PAIN RELIEF & EASY POSITIONING

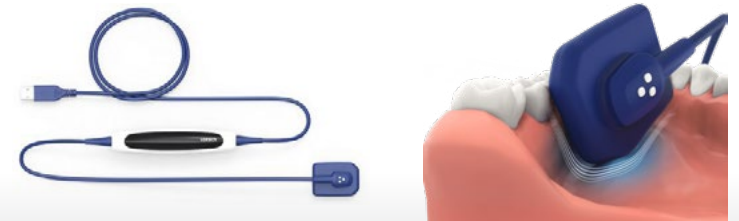
Compared to rigid Intra-oral sensor, the level of pain has been decreased by 40%.

THE SMALLEST PIXEL

It provides consistently higher resolution and clearer images for accurate diagnosis and treatment planning.

DROP RESISTANT – DURABLE SENSOR MATERIALS

The EzSensor Soft's rubberlike exterior can withstand external impact if the sensor is dropped; reducing the risk of damage.



Vatech EzRay Air Portable

- It all starts with weight innovation
- Double scatter shield in one
- Smart angulation for optimal results
- One dial for all function

WEIGHT INNOVATION: 1.4 KG

EzRay Air Portable Type, a light portable X-ray with 1.4kg, makes stable condition for positioning the device. It satisfies all primary dental diagnostic needs by creating stable and clear images at all times.

ESSENTIAL SAFETY: DOUBLE PROTECTION DESIGN Internal Shielding

The internal radiation shielding is perfectly designed to protect the operator from leakage radiation.

External Backscatter Shielding

The backscatter shield significantly reduces the operator's radiation dose.



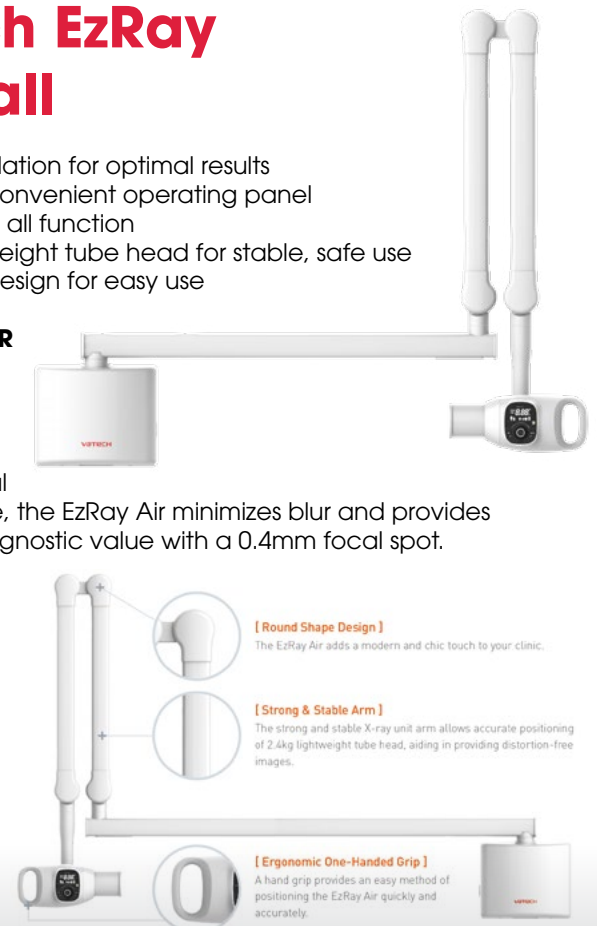
Vatech EzRay Air Wall

- Smart angulation for optimal results
- Intuitive & convenient operating panel
- One dial for all function
- 2.4kg lightweight tube head for stable, safe use
- Compact design for easy use

SECURE CLEAR IMAGES WITH A 0.4MM FOCAL SPOT

Regardless of which intraoral sensor you use, the EzRay Air minimizes blur and provides additional diagnostic value with a 0.4mm focal spot.

ERGONOMIC DESIGN FOR SAFETY AND EFFICIENCY



Vatech 2D PaX-i

- Superior image quality
- Two dedicated sensors
- Modern compact design

THE ADVANCED IMAGING SOLUTION FOR ACCURATE DENTAL DIAGNOSIS

The PaX-i provides the most precise and high quality panoramic images by combining image processing and accumulated experience in dental imaging from Vatech.

This will increase your diagnostic accuracy for improved treatment planning and patient satisfaction.



vatech



100% BUY BACK WHEN UPGRADING TO VATECH GREEN CT WITHIN 5 YEARS!!

Vatech PaX-i Insight

BEYOND 2D, DEPTH ADDED PANORAMA

Insight Pan

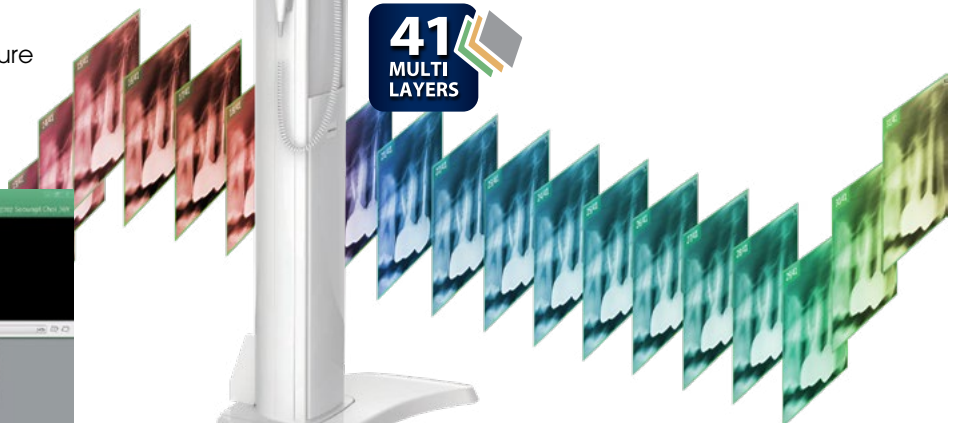
- The next evolutionary step forward in panoramic imaging with Insight Pan

Rapid Ceph

- 1.9 second acquisition time produces superb image quality
- Reduced motion artifacts and faster workflow

User Friendly Ezdent-I Software

- Powerful diagnostic value with Insight feature
- Complete solution for consultation
- Easy to learn, easy to use



Vatech 3D PaX-i3D Green

**THE NEW DIGITAL ENVIRONMENT
IT'S YOUR PRIDE, GREEN INNOVATION**

PaX-i3D Green produces superb diagnostic images, which will be a source of pride for any dental practice, and improves the health and safety of your patients.

Experience excellent image quality with VATECH's advanced technology.

vatech



Vatech 3D Green 18

GREEN INNOVATION FOR THE NEXT GENERATION

Green18 is an advanced 4-in-1 digital X-ray imaging system that incorporates PANO, CEPH (Optional), CBCT and MODEL Scan.

It provides high quality images with lower radiation by combining imaging processing and accumulated experience in dental imaging from VATECH. This will improve your diagnostic accuracy with increased treatment planning and patient satisfaction.

Vatech 3D Green 21

- Powerful dental diagnostic value with 3D images
- The optimal solution for ent diagnosis
- Professional diagnostic value with panoramic images

RASING THE BAR FOR EXCELLENCE VATECH'S NEW PREMIUM SOLUTION

Multi-modality CBCT, most comprehensive set of FOV sizes collimated from 21x19 down to 8x8, to provide a whole array of diagnostic tools to the discerning clinicians.



Minimum 30% off RRP on Synea Vision & Fusion Handpieces

Buy 3-5 handpieces and earn an additional 10% off the promo price!

Purchase 5+, get an extra 15% off the promotion price!

Multiflex and NSK connections also available as a special order

Forever young.
synea ^{years} 20



Ti-Max Z

BUY 1 GET 15% OFF

BUY 2 GET 20% OFF

BUY 3 GET 25% OFF



S-Max M



NSK Ti-Max Z range

	MODEL		ORDER CODE	RRP
Optic	Ti-Max Z900L	High speed turbine	P1111	\$1,981
Optic	Ti-Max Z800L	High speed turbine	P1110	\$1,981
Optic	Ti-Max Z95L	1:5 Increasing	C1034SW	\$2,121
Optic	Ti-Max Z85L	1:5 Increasing	C1062	\$2,221
Optic	Ti-Max Z45L	1:4.2 Increasing	C1064	\$2,263
Optic	Ti-Max Z25L	1:1 Direct Drive	C1038	\$1,491

NSK S-Max M range

	MODEL		ORDER CODE	RRP
Optic	S-Max M900L	High speed turbine	P1254	\$1,381
Optic	S-Max M800L	High speed turbine	P1253	\$1,381
Optic	S-Max M95L	1:5 Increasing	C1023	\$1,763
Optic	S-Max M25L	1:1 Direct Drive	C1024	\$1,353
Optic	S-Max M15L	4:1 Reducing	C1025	\$1,647

Call us for a quote on your required handpiece models today!



Luke Williams
0421 493 876
NSW/ACT/VIC



Lee O'Bryan
0427 758 650
Greater Sydney



Gezanne d'Assonville
0423 886 473
Queensland

