



presidential

EQUIPMENT

Edition 1



presidential
dental | medical | veterinary



1800 PRESIDENTAL
(1800 773 743)



info@presidential.com.au



presidential.com.au



/PresidentialAustralia

Message from the Director

Dear Doctor and Team,

Presidental is a service-based company focussed on assisting Dental, Medical and Veterinary clinics. Over the 31 years I have been servicing equipment, I know that it is important to have quality new equipment alternatives once equipment is no longer economical to repair. We service a range of equipment brands, however we believe A-dec to be the most reliable equipment on the market, and the best value for money. For this reason, we are proud to be NSW/ACT's A-dec exclusive equipment dealer.

Whilst the past 31 years have shaped who Presidental is today, the last few years have seen some exciting milestones and presented significant opportunities to grow.

We have listened to our growing customer-base, and invested heavily into the areas that are most valued by you. We hear clients say that they value reliable and responsive service, along with creative solutions to streamline expenses and minimise equipment downtime.

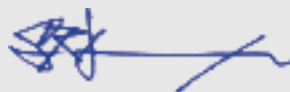
Recently both our Technical and Customer Service teams have doubled in size. We now have 12 full-time technicians, and a network of partner technicians in regional areas. We have also appointed an Operations Manager who has a proven track-record in increasing efficiency, maintaining quality, and ensuring growth of the business.

Unlike other equipment dealers, Presidental is committed to growing our team to ensure that we maintain our quality and reliable service. This is the difference between sales companies, and service companies. Sales companies want to increase their sales. Service companies are committed to sustainable growth, so that we can not only assist you now, but also well into the future.

We recently developed a new preventative maintenance offering called "Pres-Essential". Many fast growing multi-site clinics are now experiencing the benefits of streamlined equipment maintenance costs and improved cashflow with less risk.

We have exciting plans for 2019 and you can be confident that Presidental is continually looking at ways to add additional value and, to delight our customers. Put us to the test! Call us today and experience the Presidental difference!

Scott Donoghoe



Director, Presidental Pty Ltd



***Please note that to the best of our knowledge the prices listed are correct at the time of printing. Prices are subject to change, according to supplier increases.*

****Some products displayed may be representative of equipment with multiple models. Images are for illustrative purposes only and may differ slightly from specific models being offered.*

NEW X-MIND TRIUM



1.
**FULL 360°
ROTATION**
for the highest quality
acquisition.

2.
**75 µm
RESOLUTION**
for precise details.

3.
4 F.O.V.
to select the scanning area
for examination to
minimise radiation
exposure to
patients

4.
**ARTEFACTS
REDUCTION FILTER**
for better differentiation
of the tissues
(bone/tooth/metal)



Our Technical & Customer Services
Teams are growing rapidly.
We are never far away!



**FREE Equipment
Demonstration
in YOUR Surgery.
Call 0421 493
876 to book your
appointment.**

Upgrade to the BEST Operator Light on the Market!

- Pure Daylight - for accurate Tissue Analysis
- 25% brighter than halogen dental lights
- Feathered edges to reduce eye fatigue
- Radiant heat eliminated
- Upgrade your old A-dec halogen
- revolutionise your operatory



The NEW PSPIX: Smallest Phosphor Plate Scanner on the market!

- Smallest unit on the market
- Quickest scanner!
- Networks with up to 10 surgery rooms
- Integrates with all x-ray brands
- FREE Sopro Imaging software for Windows and MAC
- Integrates with most Practice Management softwares
- Large touch screen
- Automated functions for speedier operation



Is Patient Retention in Focus for Your Clinic? Increase your patient acceptance rates!



SOPROCARE

- Detect Plaque & Gingival Inflammation
- Detect Occlusal Caries
- Ideal communication tool for Dental Hygienists and Dentists

SOPROLIFE

- Detects Carious Lesions in Enamel Structure
- Surgical Guidance Tool showing Infected Tissue and Dentine
- Easily move between Diagnostic and Treatment Modes for Live Detection



implantmed

Safer, Simpler and more Flexible Implantology with the NEW Implantmed and Osstell ISQ Module!



Luke Williams
0421 493 876
NSW/ACT



James Wallace
0427 758 650
Greater Sydney Region

Protect Your Investment



55 Point Check:

- Chair
- Delivery System
- Operating Light
- Foot Control
- Spittoon
- Vacuum
- Assistant's Instrumentation
- Floor Box

Dental Chair Annual Service from \$678



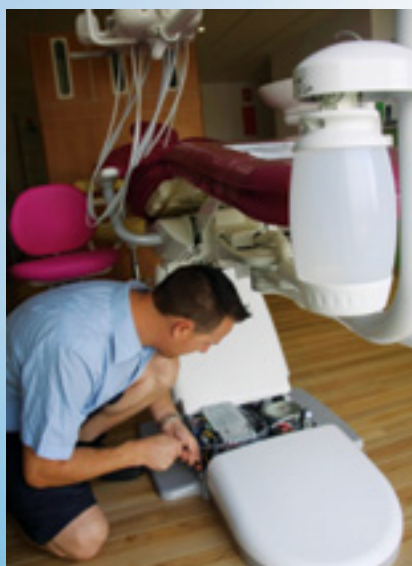
Just as your car benefits from an annual service, so will your chair!

A-dec Care is a 55 point check-up for your chair and includes replacement of listed serviceable components. Adhering to the 55 point list, one of our A-dec trained technicians will complete the full 55 point check in 2 hours.

Each day you will put your equipment to vigorous use providing treatment to your patients. Its many moving components will benefit from a regular preventative maintenance program, ensuring it continues to work when you want it to work.

With a view to maximising your equipment uptime, on completion the technician will provide a written report detailing any items deemed to require further attention.

For any Dentist that relies on equipment to perform at its best, all-day every day, a preventative maintenance and inspection plan is just as vital as regular dental check-ups on your teeth! Early detection of potential problems is key to minimising down-time.



Dear Doctor and Team,

In 2015 the national budget delivered good news for small business with a program for accelerated write-off of individual assets costing less than \$20,000 (excl GST).

Small business is defined as those with less than \$2,000,000 annual revenue. From July 1 2018 until June 30 2019, small businesses purchasing individual assets costing less than \$20,000 (excl GST) will qualify for an accelerated tax deductibility in the year in which they are purchased.

A \$19,999 spend would qualify for a \$5,699 tax reduction in the year of expenditure.

See below for a guide on accelerated depreciation amounts on some of our commonly sold equipment under the \$20,000 threshold - purchased on or after 1 July 2018, along with the net costs after tax in financial year 2018-19.

| Products under the \$20,000 threshold | GST Exclusive Price | GST Inclusive Price | Depreciation Amount FY18, Purchased after 1 July 2017 | Net Cost After Tax to Purchaser - 1 July 2018 |
|---|---------------------|---------------------|---|---|
| W&H Lisa VA 22L | \$13,631 | \$14,995 | \$3,748 | \$11,247 |
| W&H Implantmed Surgical Console | \$5,868 | \$6,455 | \$1,614 | \$4,841 |
| W&H Assistina TWIN | \$4,545 | \$5,000 | \$1,250 | \$3,750 |
| W&H Synea Fusion Handpiece Suite - 3x TG-98L and 3x WG-56LT | \$5,438 | \$5,982 | \$1,495 | \$4,487 |
| Miele Thermal disinfectant - PG8581 PD W | \$11,903 | \$13,093 | \$3,273 | \$9,820 |
| Biosonic Ultrasonic Cleaner - UC125-3.8L | \$1,624 | \$1,787 | \$447 | \$1,340 |
| SoproCARE or SoproLIFE Camera Handpiece | \$7,764 | \$8,540 | \$2,135 | \$6,405 |
| Acteon Direct USB Camera Dock | \$2,391 | \$2,630 | \$658 | \$1,972 |
| Acteon Chair-Integrated Mini-USB Dock | \$2,664 | \$2,930 | \$733 | \$2,197 |
| Acteon PSPIX | \$14,741 | \$16,215 | \$4,054 | \$12,161 |
| Acteon X-mind DC xray unit | \$8,736 | \$9,610 | \$2,402 | \$7,208 |
| Acteon X-mind Unity xray unit | \$8,736 | \$9,610 | \$2,402 | \$7,208 |
| Newtron Booster Benchtop Scaler unit | \$1,710 | \$1,881 | \$470 | \$1,411 |
| A-dec 521 Series Doctor's Stool | \$2,495 | \$2,745 | \$686 | \$2,059 |
| A-dec 200 chair with footswitch and Seamless upholstery | \$10,786 | \$11,865 | \$2,966 | \$8,899 |
| A-dec 300.B chair with footswitch and Seamless upholstery | \$12,023 | \$13,225 | \$3,306 | \$9,919 |
| A-dec 400 chair with footswitch and Seamless Upholstery | \$17,468 | \$19,215 | \$4,804 | \$14,411 |
| A-dec LED Light upgrade | \$4,292 | \$4,721 | \$1,180 | \$3,541 |
| A-dec 576L Ceiling Mount Light | \$8,355 | \$9,190 | \$2,298 | \$6,892 |
| A-dec 551 Assistant's Instrumentation | \$3,982 | \$4,380 | \$1,095 | \$3,285 |
| A-dec 542 Side-delivery (Wall mounted) | \$18,123 | \$19,935 | \$4,984 | \$14,951 |
| A-dec 545 Rear-mounted workbench and 12 o'clock suction | \$7,423 | \$8,165 | \$2,041 | \$6,124 |
| KAC-300 Cattani Compressor (3-4 surgeries) | \$8,497 | \$9,347 | \$2,336 | \$7,011 |
| MicroSMART Suction unit (1-2 surgeries) | \$6,788 | \$7,467 | \$1,867 | \$5,600 |
| TurboSMART A Suction unit (2-3 surgeries) | \$9,123 | \$10,036 | \$2,508 | \$7,528 |
| TurboSMART B Suction unit (3-4 surgeries) | \$10,296 | \$11,326 | \$2,831 | \$8,495 |

* Please speak with your accountant to see if the above applies to your specific circumstances.

If you would like to take advantage of the current small business tax benefits, please contact us on 1800 773 743 for a no-obligation quote. We can also arrange FREE product demonstrations on items such as handpieces, intra-oral cameras, operatory LED upgrades, PSPIX phosphorous plate scanner and the New Implantmed with integrated ISQ Osstell Module.



Warm regards,
Luke Williams, Sales & Marketing Manager

**Autoclave Validation
from \$391**



Ask us about XRAY
COMPLIANCE
TESTING!



**XRAY Compliance Testing
from \$408**



presidential

pres-essential

- ✓ Reduced Labour rates
- ✓ No callout fees
- ✓ Priority Service
- ✓ Streamline your cashflow with average costs charged monthly
- ✓ Ask us for more information!



Why Presidential?

- **Have you ever tallied up your yearly dental equipment maintenance bills?**
- **Is your equipment consistently running at optimal performance levels and always reliable?**
- **Do you currently have to deal with multiple service providers to maintain all the equipment in your clinic?**
- **Is your technician A-dec authorised/100% maintaining your A-dec warranties?**

Presidential offers you responsive and reliable service, with 10 technicians and 6 customer service staff, we are well positioned to service all of your dental equipment.

Our Sales and Customer Service team provide valuable insights and experience when it comes to sharing what works in dental clinics, and the common pitfalls that the buyer needs to navigate.

Presidential may not always offer the cheapest purchase price, but we will most definitely minimise the cost of ownership over a 5 year period – whilst some other cheaper suppliers cost you more after 5 years of maintenance costs.

Presidential is a trusted advisor to many doctors and clinics – ranging from single surgery operators to corporates listed on the Australian Stock Exchange that operate 7 days a week. We are equipped to grow with your business, and not only that, we will help you grow by providing insights to:

- **Minimise your operating costs**
- **Maximise your patient retention**
- **Streamline procedure efficiencies**
- **Reduce operator fatigue**
- **Keep abreast of regulatory changes and future proof your business**

The question really is, can you afford not to have Presidential looking after your business!

"Presidential has been supplying and maintaining our Dental Surgeries for over 25 years.

Throughout this time, we have invested in A-dec chairs and W & H Autoclaves. Our main priority in purchasing these items is reliability, and has proved a successful purchasing determiner over this extended period. Regular services is a must if unwanted downtime is to be avoided, for which Presidential has been instrumental in keeping our apparatuses operating to their maximum performance. Because of their service team being based nearby, it is reassuring that problems are often solved on site, and within a small timeframe.

As dentists, we are in the Care industry. Good equipment is paramount in delivering quality care. Our service is dependent on a good system, and having Presidential looking after our interests in terms of dental equipment, the delivery of good practice can be realised."

Dr Kent Driver, Dynamic Dental, Belmont



A-dec 200 & A-dec 300 Pedestal

A-dec 200[®]

FROM **\$22,879***

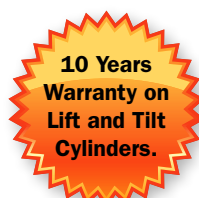


Earn Frequent Flyer points with this purchase*



Package Includes:

- Dental Chair
- Seamless Upholstery
- Delivery System
- Assistant's Instrumentation
- Halogen Light
- Support Centre With Cuspidor



Upgrade For Added Endodontic Capability

to an A-dec 300 delivery system with deluxe touchpad and integrate an electric motor.

TRADE-IN'S WELCOME

Financed from approximately \$14 per day or \$99 per week*

FREE PLANT EQUIPMENT CONSULTATION

NEW A-dec 300[®] Pedestal

FROM **\$30,619***



Earn Frequent Flyer points with this purchase*

Package* Includes:

- Dental Chair
- Seamless Upholstery
- Delivery System
- Assistant Instrumentation
- Support Centre
- Halogen

Buy an A-dec 300 Chair Package and receive a Bonus - check our website for the latest offers!



Financed from approximately \$16 per day or \$113 per week*

FREE PLANT EQUIPMENT CONSULTATION

† A-dec warrants A-dec dental chair cylinders for 10 years from the date of purchase of chair or cylinder, 5 years warranty on all other parts and labour.

*All repayments based on 5 year term with 20% residual.

~ Image used for illustration purposes only.

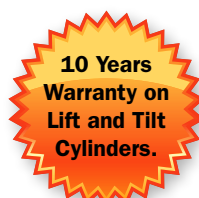


NEW A-dec 300 Radius®

FROM **\$31,649***



Earn Frequent Flyer points
with this purchase*



Package Includes:

- Dental Chair
- Seamless Upholstery
- Delivery System
- Assistant's Instrumentation
- Halogen Light



Financed from approximately
\$15 per day or \$105 per week*

FREE PLANT EQUIPMENT
CONSULTATION

Buy an
A-dec 300
Chair Package and
receive a Bonus -
check our website
for the latest
offers!

TRADE-IN'S
WELCOME

A-dec 400®

FROM **\$36,514***



Earn Frequent Flyer points
with this purchase*

- Thin backrest
- Lever headrest
- Your choice of delivery systems
- Endodontic feature

Package* Includes:

- Dental Chair
- Seamless Upholstery
- Delivery System
- Assistant Instrumentation
- Halogen Light

Buy an
A-dec 400
Chair Package and
receive a Bonus -
check our website
for the latest
offers!



Financed from approximately
\$16 per day or \$113 per week*

FREE PLANT EQUIPMENT
CONSULTATION

† A-dec warrants A-dec dental chair cylinders for 10 years from the date of purchase of chair or cylinder, 5 years warranty on all other parts and labour.

*All repayments based on 5 year term with 20% residual.

~ Image used for illustration purposes only.



A-dec 500[®]

FROM **\$38,338***



**Earn Frequent Flyer points
with this purchase***

**10 Years
Warranty on
Lift and Tilt
Cylinders.**

- **Most comfortable dental chair on the market**
- **Optimal access to the oral cavity**
- **Reduces pain and discomfort for the doctor**
- **Most adaptable chair available with 200+ configurations**
- **Ideal chair for Endodontics with large touchpad screen & micro-motor function presets.**

**Buy an
A-dec 500
Chair Package and
receive a Bonus -
check our website
for the latest
offers!**

Package Includes*:

- Dental Chair
- Seamless Upholstery
- Delivery System
- Assistant's Instrumentation
- Halogen Light



**Financed from approximately
\$26 per day or \$183 per week***

**FREE PLANT EQUIPMENT
CONSULTATION**

**TRADE-IN'S
WELCOME**

† A-dec warrants A-dec dental chair cylinders, both lift and tilt, for 10 years from the date of purchase of chair or cylinder, 5 years warranty. on all other parts and labour*All repayments based on 5 year term with 20% residual.

** Please quote PROMO-CHAIR-RESTAURANT-VOUCHER at the time of purchase to receive this offer.

~ Image used for illustration purposes only.



Delivery System Options

542 SIDE-DELIVERY

When patients enter a dental operatory with the A-dec 500 side delivery stowed out of sight, the dental chair becomes the focal point, not the “drills,” helping put patients at ease.

With Disc Pedal Control

\$19,935

542S/W

\$20,235

542L/W

Ask us
about Lever
Foot Control
options



Assistant Suction Options

12 O'CLOCK SUCTION WORKSTATION

With so many positioning options, assistants can adjust the A-dec 500 12 o'clock assistant's instrumentation to accommodate their individual needs with everything comfortably at their fingertips.

\$8,165

545/3/W

\$8,595

545/2/W



541 DUO

You and your assistant work completely in sync. Everything you need positioned exactly where you want it. Handpieces. Accessories. Supplies. Your patients feel at ease with instrumentation out of their direct view. It's all possible with the A-dec 500 12 o'clock duo delivery system.

\$20,235

541D/W

\$21,510

541D/2/W



A-dec LED Upgrades for Operator Light

Upgrade
your existing
chair-mounted,
ceiling-mounted
or track-mounted
halogen light

a-dec
reliablecreativesolutions™

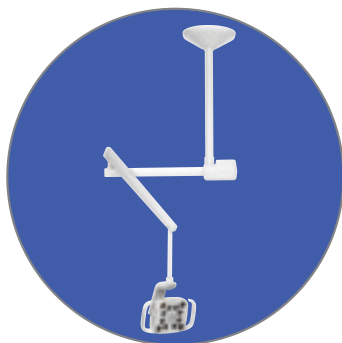
FREE
Product
Demonstrations
Available

- Light/vision access to the oral cavity, we've just made it a whole lot easier!
- With over 60% of fatigue due to visual accommodation and retinal adjustment, the LED Light upgrade combats fatigue with exceptional illumination, 'stadium effect' anti-shadowing technology, and light 'feathering' designed to almost entirely reduce retinal adjustment.
- High colour rendering index for accurate tissue analysis
- Cure-safe mode provides full illumination without premature curing.

A-dec LED Upgrade Price -
\$4,721 RRP \$5,555

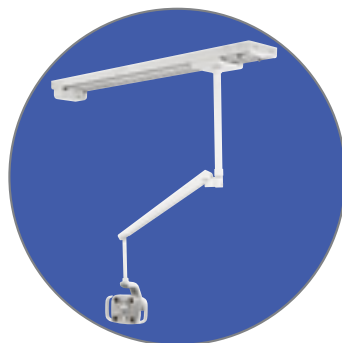
28-1924-00

Includes upgrades for existing A-dec Halogen light on a chair-mount, ceiling-mount, track mount, or Preference Cabinetry-mount.



Ceiling Mounted A-dec LED Light
576L

\$9,190



Track Mounted A-dec LED Light
577L

\$10,055



**Preference Cabinetry
Mounted A-dec LED Light** 574L

\$9,190

Call
1800 773 743
for a quote on your LED
upgrade, Stand-alone
LED Operator Light,
or chair-integrated LED
Light system today!

A-dec 371L LED Light

For A-dec 200 chair, manual adjustment on the light

- Improved vision
- Accurate tissue analysis
- Unparalleled ergonomics
- Sustained eye health
- Low heat, no noise
- Low cost of ownership

\$4,660

371L/200



A-dec 400 Stools

A-dec 421 Doctor's Stool Find the Right Height

To choose the right stool height, measure from hips to the feet.

Above 32" - Choose tall height

Under 32" - Choose standard height



**A-dec 421 Doctor's Stool
with upholstery**

\$1,740



**A-dec 422 Assistant's Stool
with upholstery**

\$2,185

| | A-dec 421 Doctor's Stool | A-dec 422 Assistant's Stool |
|---------------------------------|-----------------------------|--------------------------------|
| Contoured backrest | • | |
| Contoured seat | • | • |
| Ergonomic tilt | • | |
| Adjustable torso support | | • |
| Easy-to-reach adjustment levers | • | • |
| Height-adjustable foot ring | | • |

* A-dec 400 stools do not have the new dynamic seating system that is available in the 500 stool line.

**Save up
to 30% when
you purchase
stools with
a patient
chair**

A-dec 500 Stools



**A-dec 521 Doctor's
Stool with Optional
Swing-out Armrests**

\$3,605

**A-dec 521 Doctor's
Stool
(without armrests)**

\$2,745

**A-dec 521 Doctor's Stool
Find the Right Height**



**A-dec 522 Assistant's
Stool with Optional Foot
Pedestal and Backrest**

\$4,670

**A-dec 522 Assistant's
Stool (no backrest,
no pedestal)**

\$3,395

To choose the right stool height, measure from hips to the feet.

Above 34" - Choose tall height

Under 34" - Choose standard height

Hip to Feet



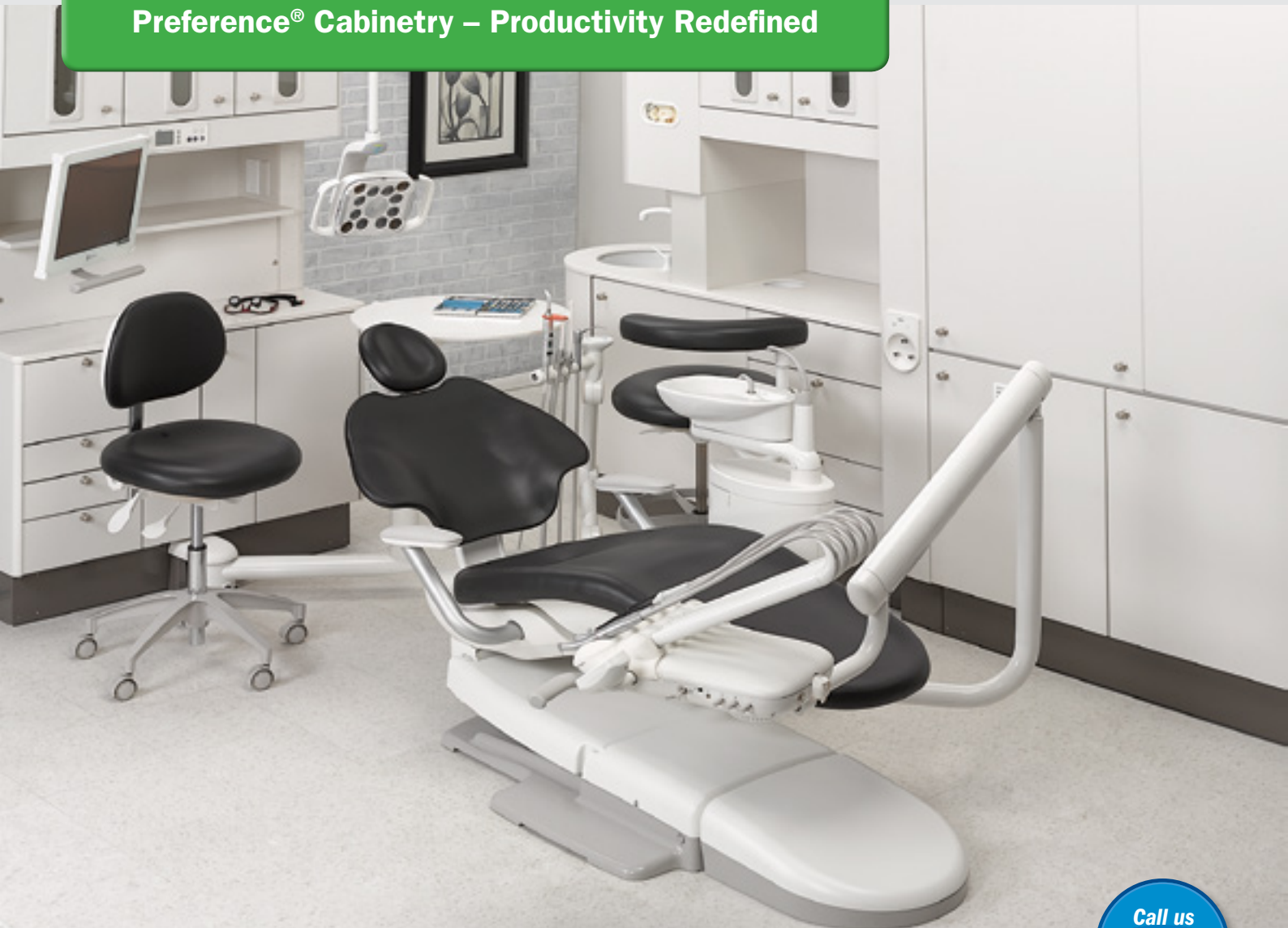
Optional Swing-out Armrests

Three adjustments—width, height and rotation –give you greater support and mobility.

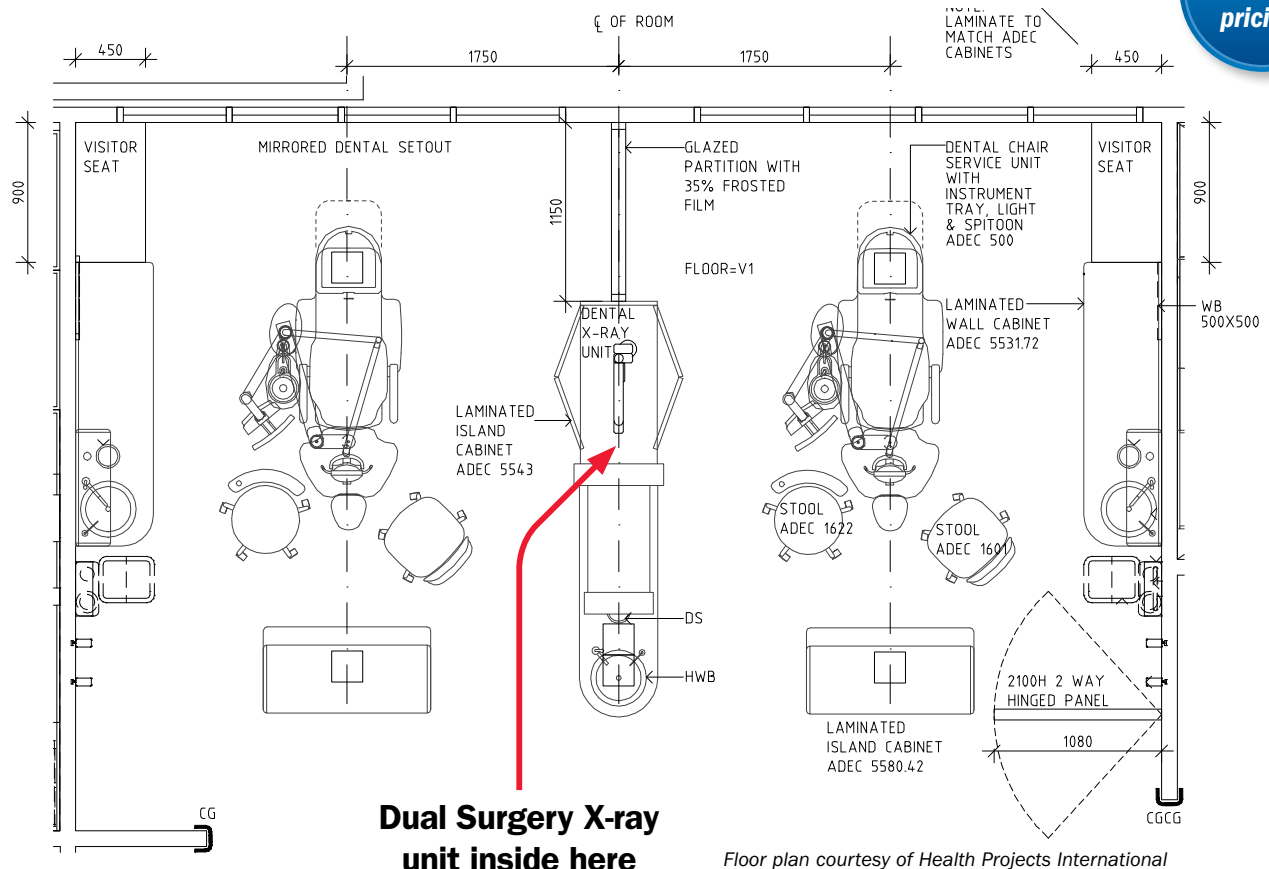
- Rest your arms while working in the oral cavity
- Slide armrests out of the way with ease
- Adjust armrest height



| | Doctor's Stool A-dec 521 | Assistant's Stool A-dec 522 |
|-----------------------------|-----------------------------|--------------------------------|
| Dynamic seating system | • | • |
| Contoured backrest | • | optional |
| Seat tilt adjustment | • | only with optional backrest |
| Swing-out armrests | optional | |
| Height-adjustable foot ring | | • |
| Foot pedestal | | optional |



Call us
for latest
pricing!



Treatment Consoles

Everything in its place and a place for everything. That's exactly what you get with the Preference Collection 5580 treatment console. With a redesigned midsection, we've streamlined the appearance and functionality. With the centre partition removed, we've opened up the usable space to accommodate a variety of larger ancillary devices. We've also increased the capacity of the wire chase making it easier to run cables or utilities through the cabinetry without cutting additional holes.

Think about how you work. What equipment do you use now, and what do you see yourself using in the future? Imagine yourself at your optimal performance. What does that look like? When creating a system that meets your specific needs, think about where you look for your equipment and what instinctively feels natural. With these considerations in mind, you'll be well on your way to creating a streamlined environment that works the way you do.



**Preference Collection
5580 treatment console
with soffit extension**



SWING-OUT SHELVES
Rotate toward the operator for
easy access to equipment.



ADJUSTABLE GLASS SHELVES
Accommodate different-sized
tubs, trays and cassettes.



Accessory Consoles

In a fixed or semi-walled floor plan, Preference Collection accessory consoles offer an abundance of storage, wash station, and delivery system options. Equipment and materials are well organised and easy to reach. The rounded and angled countertops allow clear access into the treatment room. Preference Collection upper storage and dispensing units keep cups, towels, and masks discreetly stored, creating a patient-friendly environment.



EQUIPMENT DRAWERS
Offer excellent access to
equipment and supplies.



**SOLID SURFACE SINK AND
WASTE DROP**
Add a professional look and
simplify cleaning.



**Preference Collection
5730 dispensing unit**

**Preference Slimline
5731 storage unit**



**Preference Collection
5531 accessory console**

Call us
for pricing on
showroom
cabinetry units on
1800 773 743

increase treatment acceptance

Camera + dock package
financed from as little
as \$3 per day



Footswitch for image
memory

SA-009002

\$358



USB2 footswitch for image
memory

SA-009009

\$555

Check our
website for the
latest offers!



\$1,575

NE-DR-17E

\$2,415

NE-DR-22E

DIRECT USB Mini-dock (NEW)

USB 2.0 - Plug n' Play dock allowing easy
use in one or multiple surgeries. Single
image memory plus unlimited image
storage with included Sopro Imaging Software.

SA-S7171600

\$2,630



OR

Integrated USB Mini-dock

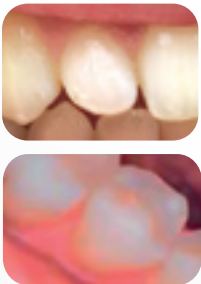
USB 2.0 - Clean integration into your dental chair
making your camera always ready to use. Single
image memory plus unlimited image storage with
included Sopro Imaging Software.

SA-S7171700

\$2,930



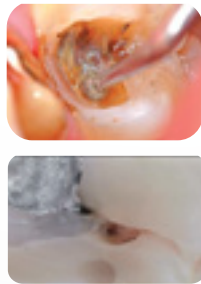
SOPRO 617



SA-S6170003

\$5,005

SOPRO 717



SA-S7170100

\$6,900

SOPRO LIFE



DIAGNOSTIC mode



TREATMENT mode



DAYLIGHT mode



SA-S9000001

\$8,540

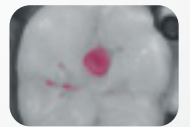
SOPRO CARE



PERIO mode



CARIO mode



DAYLIGHT mode



SA-S9500001

\$8,540



Sopro Camera
Sheaths - Pack
of 500

\$570

SA-403017



Sopro Camera
Tips - Set of 4

\$237

SA-990135

DON'T OWN AN A-DEC CHAIR?

Not a problem. Our camera range can be integrated into most
major brands of dental chairs in the market today including
Planmeca, Belmont, Sirona and Kavo.

**Call 1800 PRESIDENTAL (1800 773 743)
to find out more.**

PSPiX²

**PSPiX financed
from as little
as \$7 per day**

Check our
website for
the latest
offers!











reddot design award
winner 2015

**2 Years
Warranty**

RRP \$16,215*

Windows compatible: SA-S7020006
Mac compatible: SA-S7020010

Standard Imaging Plate

| PSPiX2 | | PSPiX 1 st generation | |
|--|-----------|---|----------|
|  | Size 0 |  | Size 0 |
|  | Size 1 |  | Size 1 |
|  | Size 2 |  | Size 2 |
|  | Size 3 |  | Size 3 |
| PSPiX2 | | Set of 2 | Set of 6 |
| Size 0 (22 x 35 mm) | SA-990215 | \$237.00 | \$980.00 |
| Size 1 (24 x 40 mm) | SA-990216 | \$237.00 | \$980.00 |
| Size 2 (31 x 41 mm) | SA-990217 | \$237.00 | \$980.00 |
| Size 3 (27 x 54 mm) | SA-990218 | \$237.00 | \$980.00 |

Protective Bag for Imaging Plate






Size 0

Size 1

Size 2

Size 3

PSPIX2

PSPIX 1st

set of 250

generation

set of 250

Size 0

SA-700342L

\$116.00

SA-700342L

\$116.00

Size 1

SA-700343L

\$116.00

SA-700343L

\$116.00

Size 2

SA-700344L

\$116.00

SA-700344L

\$116.00

Size 3

SA-700345L

\$116.00





SA-700345L

\$116.00

Size 4 Plate Kit

| | | |
|------------------|---|-----------------|
| SA-990252 | Size 4 Kit (includes the following:) | \$675.00 |
| SA-700644 | Bags for imaging plate size 4 | \$108.50 |
| SA-990248 | Imaging plate size 3 (3 SET) | \$590.00 |
| SA-990251 | Plastic Support Size 4 (1/pc) | \$41.00 |

Bag & Cover for Imaging Plate

| PSPiX2 | | PSPiX 1 st generation | |
|---|-----------|---|---------------------|
|  | Size 0 |  | Size 0 |
|  | Size 1 |  | Size 1 |
|  | Size 2 |  | Size 2 |
|  | Size 3 |  | Size 3 |
| PSPiX2 | | set of 300 | set of 250 |
| Size 0 | SA-700546 | \$226.00 | |
| Size 1 | SA-700547 | \$226.00 | SA-700339L \$168.50 |
| Size 2 | SA-700548 | \$226.00 | SA-700340L \$168.50 |
| Size 3 | SA-700549 | \$226.00 | SA-700341L \$168.50 |

X-MIND unity



Ask us about X-Mind unity Long Cone options



reddot design award winner 2013

X-Mind Unity & DC financed from as little as \$3 per day

2 Years Warranty

CALL US
1800 773 743
FOR LATEST PRICING



X-Mind Top Mount (80cm) SA-W0800009

X-MIND DC

Ask us for discounted pricing on 2 or more



X-Mind 80cm Top Mount Arm SA-F03840

Top Mount X-Mind™ unity (Standard Cone)

SA-W0800000 X-Mind™ unity with 40cm Top Mount Arm

SA-W0800001 X-Mind™ unity with 80cm Top Mount Arm **TOP SELLER!**

SA-W0800002 X-Mind™ unity with 110cm Top Mount Arm

Top Mount X-Mind™ DC (Standard Cone)

SA-F03840 X-mind™ unity DC with 80cm Top Mount Arm **TOP SELLER!**

SA-F03841 X-mind™ DC with 110cm Top Mount Arm

Bottom Mount X-Mind™ unity (Standard Cone)

SA-W0800009 X-Mind™ unity with 40cm Bottom Mount Arm

SA-W0800010 X-Mind™ unity with 80cm Bottom Mount Arm

SA-W0800011 X-Mind™ unity with 110cm Bottom Mount Arm

Bottom Mount X-Mind™ DC (Standard Cone)

SA-F03124 X-mind™ DC with 40cm Bottom Mount Arm

SA-F03125 X-mind™ DC with 80cm Bottom Mount Arm

SA-F03126 X-mind™ uDC with 110cm Bottom Mount Arm

X-Mind™ unity Parts



Remote exposure button upgrade kit - SA-W080021



Remote exposure button upgrade kit - SA-W080021

X-Mind™ DC Parts

Did you know we can also help you with X-ray EPA Compliance Testing from just \$408 per unit

SOPIX



Sopix Sensors

| | |
|--|-----------------|
| Standard Definition - Size 1 (Windows) - SA-S8023000 | \$8,645 |
| Standard Definition - Size 2 (Windows) - SA-S8023001 | \$12,350 |
| High Definition - Size 1 (Windows) - SA-S8020004 | \$13,495 |
| High Definition - Size 2 (Windows) - SA-S8020005 | \$18,770 |
| Standard Definition - Size 1 (Mac) - SA-S8024000 | \$8,645 |
| Standard Definition - Size 2 (Mac) - SA-S8024001 | \$12,350 |
| High Definition - Size 1 (Mac) - SA-S8022000 | \$13,495 |
| High Definition - Size 2 (Mac) - SA-S8022001 | \$18,770 |

Sopix Inside

| | |
|--|-----------------|
| Standard Definition - Size 1 (Windows) - SA-S8026000 | \$8,645 |
| Standard Definition - Size 2 (Windows) - SA-S8026001 | \$12,350 |
| High Definition - Size 1 (Windows) - SA-S8025000 | \$13,495 |
| High Definition - Size 2 (Windows) - SA-S8025001 | \$18,770 |
| Standard Definition - Size 1 (Mac) - SA-S8026002 | \$8,645 |
| Standard Definition - Size 2 (Mac) - SA-S8026003 | \$12,350 |
| High Definition - Size 1 (Mac) - SA-S8025002 | \$13,495 |
| High Definition - Size 2 (Mac) - SA-S8025003 | \$18,770 |

X-Mind™ Imaging Consumables



Sopro Tabs - Foam Adhesive
Tabs (pack of 500) - SA-700406 **\$68.50**



PSPIX 1st Generation Consumables



Starter kit, std imaging plate for
PSPIX® imaging - SA-700200
2 x size 0 (22 x 31 mm)
5 x size 2 (31 x 41 mm)
2 x size 1 (24 x 40 mm)
1 x size 3 (27 x 54 mm)

\$1,595



Starter kit of accessories for
PSPIX® imaging - SA-700201

\$680.00



Imaging plate storage box
(delivered without imaging
plates) - SA-S700482

\$252.50



«Medical device» power
supply
for PSPIX® - SA-703004

\$1,000

New PSPIX® 2 Consumables



Bag & cover for imaging plate
start up kit (set of 100 pieces of
size 1 and 100 pieces of
size 2) - SA-S_700550 **\$137.00**



Imaging plate storage box
(delivered without imaging
plates) - SA-990219 **\$121.00**



Stylus for PSPIX® 2 touchscreen
- SA-5132 **\$16.00**

**PSPIX X-RAY
SCANNER financed
from as little as
\$7 per day**

**SOPIX Digital
Sensor financed
from as little as
\$4 per day**

X-MIND trium

2 years
manufacturer's
warranty included
- optional extra
warranty

X-Mind Trium PAN
financed from as little
as \$28 per day

3D IMAGING SYSTEM

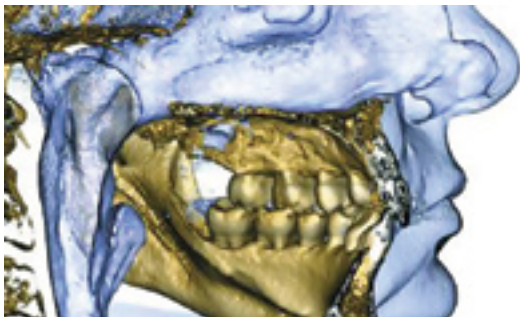
- Smallest voxel size – clearest image definition
- Pulsed exposure – lowest dosage of exposure
- Patented Ceph collimation – smallest footprint on the market
- Wide range of F.O.V. – minimizing radiation and exposure
- 2D upgradable model to 3D and CEPH models
- Implant library feature to assist with implant planning
- Automated implant reporting tool

X-Mind™ Trium Options

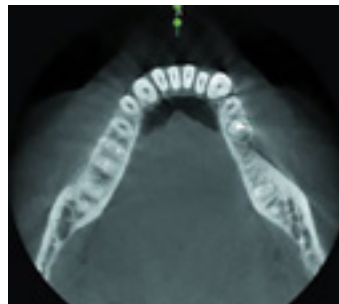
| | |
|---|-----------|
| X-Mind™ Trium Pan - SA-W0900001 | \$59,525 |
| X-Mind™ Trium Pan-Ceph (3D Upgradeable) Right/Left - Ceph sensor only - SA-W0900239/240 | \$73,980 |
| X-Mind™ Trium Pan-3D - SA-W0900004 | \$132,215 |
| X-Mind™ Trium Pan-Ceph-3d - SA-W0900006 | \$147,915 |



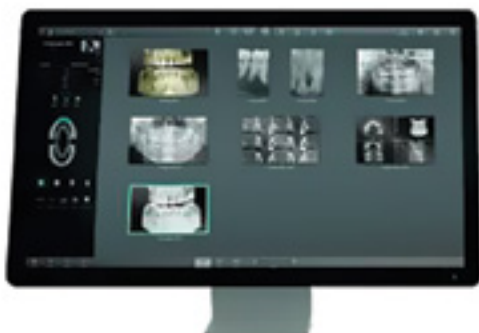
FINEST IMAGING QUALITY - 75 VOXELS



ARTIFACTS REDUCTION FILTER



AUTOMATED IMPLANT REPORTS VIA ACTEON IMAGING SUITE 3D



Ask us about
Showroom
X-Mind Trium
deals!

Mini LED Australia Curing Light



- Emits light in the most efficient part of the spectrum
- Only 6 to 12 seconds to polymerize 2mm of any composite
- Choice of three modes for optimal curing of all types of composite - Fast mode, Pulse mode and Ramping mode.

\$1,741

SA-F02621

Mini LED Black Curing Light



- Cures 3 mm of any composite in 10 seconds
- Multi-fibered glass light guide
- Anodized aluminum handpiece
- Very high-performance single L.E.D. built into a patented optic module

\$1,260

SA-F05400

Mini LED ScanWave

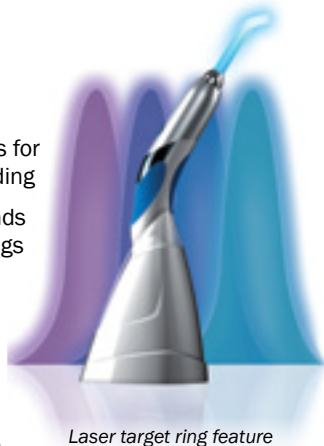
Polymerization Modes

Bonding Modes

1. A pulse cycle of 12x5 seconds for a complete arch or indirect bonding
2. A continuous cycle of 5 seconds for clear and translucent bondings

Mode Scan

1. Full Scan, continuous cycle of 9 seconds. Universal mode for all types of materials regardless of the photo-initiator
2. Soft Scan, cycle of 20 seconds. Soft start of 5 seconds, then full power during 10 seconds and a soft ending of 5 seconds to avoid any thermal choc.



Laser target ring feature

\$3,650

SA-F05450

Mini LED Supercharged



The most powerful curing LED & the widest spectrum

- High power: 3 seconds curing light
- Wide spectrum: cure all composites
- Hygiene: no cross contamination
- Safety - no risk of pulpal damage

\$2,762

SA-F05214

Softly Amalgamator by Acteon

- Universal high-speed mixer for pre-dosed dental materials in capsules (amalgams, glass ionomers)
- Precise, controlled and consistent mixing
- Ergonomic design, easy to use
- Oscillating range 25mm
- Mixing frequency 4000 vibrations/min
- Extremely quiet and easy to maintain



\$1,082

SA-F03190

SOPROCARE

- Accurate detection of plaque, gingival inflammation and occlusal caries.
- Easy communication and motivation of the patient
- Quick follow-up of the patient with photos/videos comparison

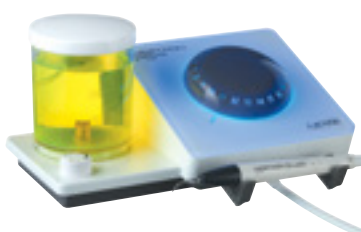


SoproCare
SA-S9500001

\$8,540

NEUTRON P5XS

- Highlights dental plaque perfectly for a guided clinical care
- Enhances treatment accuracy and avoids the overuse of instruments
- Improves clinical quality by fluorescent dental plaque revelation



Newtron Booster
SA-F60203

\$1,881

Pure Newtron P5 XS with B.LED
SA-F62105

\$4,780

AIR N GO EASY

AIR-N-GO easy completes the prophylaxis session by removal pathogenic bacteria in difficult to access areas and promotes the good balance of the oral flora and the patient's oral health.

- This deep cleaning with the wide range of AIR-N-GO powders will bring a refreshing experience to the patient.



AIR-N-GO easy
SA-F10102

\$2,373

Air N Go Easy Perio Kit
SA-F10120

\$918

SOPROCARE

SOPROCARE provides effective treatment planning by comparing images from past patient visits in order to allow assessment of patient oral health instructions. SOPROCARE is not only a diagnostic and control tool for the practitioner, but also an efficient education and motivation tool for patients.



The complete Fluorescence Effect financed from as little as \$6 per day

Oil Service in Record Time

Thorough, efficient, safe

BRAND NEW PRODUCT

assistina^{TWIN}



Perfect oil service in just 10 seconds

The new Assistina TWIN reprocesses your instruments quicker and more thoroughly than ever before. Thanks to the innovative oil nebulisation technology, the unit can process up to 360 instruments per hour. The ideal, practical solution for every practice.

PLEASE
REFER TO
PAGE 26 FOR
COUPLINGS

RRP \$5,000

WH-3031000



Ask us
about our
latest
offers!



Assistina TWIN Care Set



\$232.00

WH-07484000

assistina 3X3 **NEW**

Clean inside, clean outside

Perfect cleaning inside and outside

The fully automatic Assistina 3x3 takes over the time-consuming process of preparing straight and contra-angle handpieces and turbines for sterilisation.

YOUR ADVANTAGES AT A GLANCE:

- Automatic internal cleaning
- Automatic external cleaning (3x3 model only)
- Lubrication of the transmission parts
- Short cycle time
- Easy to use
- Optimum price performance ratio

3x3 **\$7,720***

WH-19923000

3x2 **\$6,225***

WH-19922000



Assistina 3x3 Consumables



W&H Activefluid, MC-1100:
1= \$47.50, 6=\$272.50



W&H Service Oil F1, MD-200:
1= \$59.50, 4=\$227.00

Assistina 301 Consumables



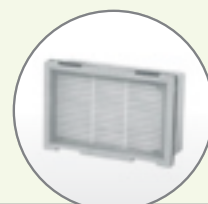
W&H Service Oil F1 500ml,
MD-500: \$126.50



W&H Cleaning Liquid 1L,
MC-1000: \$68.00



W&H Fleeces 20pk
WH-02694500: \$42.50



Exhaust Filter Pack
WH-02670500: \$105.00

Assistina 301 PLUS

Automatic instrument maintenance procedures provide distinct advantages for correct cleaning and lubrication as well as perfect function and long working life of dental instruments.

It is simple, safe and cost-reducing.

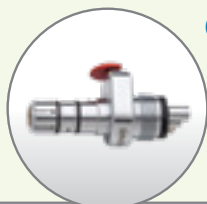


NOW **\$2,950***

WH-301P



Couplings



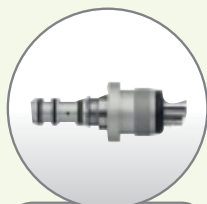
RM/ISO Adaptor for all slow speed
handpieces WH-06257600:
\$341.50



Rotoquick connection for all
W&H turbines WH-02690400:
\$283



KaVo Multiflex
WH-04713200:
\$157.00









Sirona
WH-02692000:
\$302.00

Vision Turbine Handpieces

| | | |
|--|---------|----------------|
|  | TK-100L | \$2,570 |
|  | TK-98L | \$2,570 |
|  | TK-97L | \$2,570 |
|  | TK-94L | \$2,360 |






Vision Contra-Angles & Straight Handpieces

| | | |
|--|---------|----------------|
|  | WK-99LT | \$2,700 |
|  | WK-93LT | \$2,700 |
|  | WK-56LT | \$1,830 |
|  | WK-66LT | \$2,005 |
|  | WK-86LT | \$2,190 |
|  | HK-43LT | \$1,780 |


Vision Contra-Angle Handpieces – Short Edition

| | | |
|--|-----------|----------------|
|  | WK-99LT S | \$2,700 |
|  | WK-93LT S | \$2,700 |
|  | WK-56LT S | \$1,830 |
|  | WK-66LT S | \$2,005 |

Roto Quick Couplings

| | | | |
|--|----------|--|-----------------|
|  | WH-RQ-24 | Standard 6-hole connection | \$510.00 |
|  | WH-RQ-34 | Standard 6-hole connection, adjustable spray | \$600.00 |
|  | WH-RQ-03 | Borden 2(3)-hole connection | \$308.00 |
|  | WH-RQ-04 | Standard 4-hole connection | \$308.00 |
|  | WH-RQ-14 | Standard 4-hole connection, adjustable spray | \$422.50 |

W&H Coupling with LED for KaVo Multiflex Connection

| | | | |
|--|--------------|--|----------------|
|  | WH-RM-34-LED | Standard 6-hole connection, adjustable spray | \$1,095 |
|--|--------------|--|----------------|

syneo VISION

Synea Vision Turbine handpieces

- 100% shadowless illumination of the treatment site with the ring LED
- Optimum cooling of the treatment site with 5-fold spray
- Four head sizes for every application case
- Scratch-resistant surfaces
- 24 months warranty


ALSO
AVAILABLE WITH
KAVO OR NSK
CONNECTIONS

Ask us
how to
save up
to 30%!



Synea Vision:
Lightest to hold,
Quietest, Perfect
Illumination,
Best Performing
handpieces! Ask
us for a trial!

Fusion Turbine Handpieces

| | | |
|--|--------|----------------|
|  | TG-98L | \$1,835 |
| | TG-98 | \$1,250 |
| | TG-97L | \$1,835 |
| | TG-97 | \$1,250 |

synea FUSION

Synea Fusion handpieces

- Largest illumination field with LED+
- Optimum access, best view and high power with perfect head size to performance ratio
- Safe cooling with Quattro Spray
- Ceramic ball bearings for quiet, vibration-free operation
- 12 months warranty

**ALSO
AVAILABLE WITH
KAVO OR NSK
CONNECTIONS**






**Ask us
how to
save up
to 40%!**



Fusion Contra-Angle and Straight Handpieces

| | | |
|--|----------|----------------|
|  | WG-99LT | \$1,950 |
| | WG-99A | \$1,455 |
| | WG-56 LT | \$1,355 |
| | WG-56 A | \$1,170 |
| | WG-66 LT | \$1,600 |
| | WG-66 A | \$1,285 |
|  | HG-43 A | \$970 |

Air Motors

| | | | |
|--|---------------|---|----------------|
|  | WH-AM-25 L RM | Standard 6-hole connection, for contra-angle and straight handpieces with light | \$1,940 |
|  | WH-AM-25 A RM | Standard 4-hole connection, for contra-angle and straight handpieces without light, with spray | \$1,270 |
|  | WH-AM-25 A BC | Borden 2(3)-hole fixed connection, for contra-angle and straight handpieces without light, with spray | \$1,520 |
|  | WH-AM-25 RM | Standard 4-hole, fixed connection for contra-angle and straight handpieces without light | \$840 |
|  | WH-AM-25 BC | Borden 2(3)-hole fixed connection for contra-angle and straight handpieces without light | \$840 |

**Air Motors
with E-System
also available,
External Sleeve
diameter or
20mm**

**Highest Selling
Air Motor model!**

Alegra Turbine Handpieces



TE-98 LQ **\$1,290**

TE-97 LQ **\$1,290**

Rotoquick couplings with generator for Alegra TE-97/98 LQ Turbine Handpieces



RQ-03 -
Bordern
2-hole” **\$308**



RQ-54 - Std
Std 4-hole **\$555**

Alegra Turbine Handpieces with Ceramic Ball Bearings and without Light



TE-98 **\$1,040**

TE-97 **\$1,040**

Alegra Contra-Angle and Straight Handpieces



WE-56 **\$565**

WE-57 **\$560**



WE-66 **\$625**

HE-43 **\$452**

Alegra Contra-Angle Handpieces with Generator



WE-99 LED G **\$2,265**

WE-66 LED G **\$1,815**

WE-56 LED G **\$1,665**

Alegra Contra-Angle and Straight Handpieces – Sleeve diameter 18mm



WE-56 T **\$472.50**

WE-57 T **\$472.50**



WE-66 T **\$595**

HE-43 T **\$430**

alegra

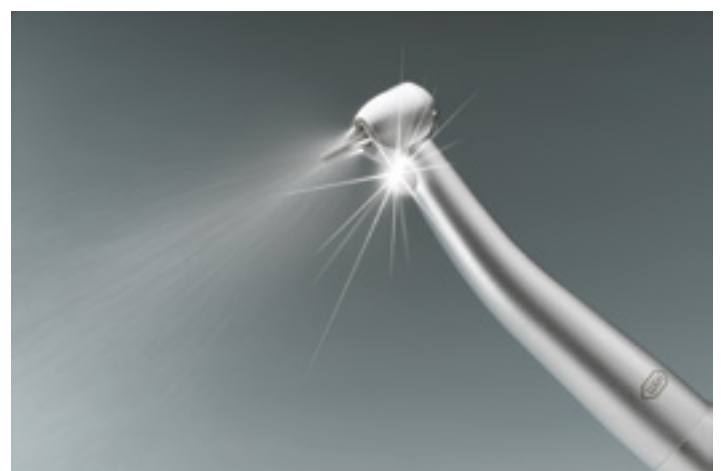
Synea Alegra handpieces

- Optimal view and illumination of the treatment site thanks to the generator technology in the coupling, optimal position of the LED and the turbine head
- Extremely quiet operation and long service life due to ceramic ball bearings
- Perfect spray function thanks to internal water filters
- Fast removal of tooth mass thanks to extremely high torque

**ALSO
AVAILABLE WITH
KAVO OR NSK
CONNECTIONS**



**Ask us
how to
save up
to 30%!**



Entran – Endo Cordless Set



EB-300

\$3,395

Endo Cordless Set consists of:

- Contra-Angle Head EB-16
- Drive Handpiece EB-3 H
- Charging Station
- Rechargeable Batter Li-Ion
- Mains cable and file overview

Endea Contra-Angle Handpieces



EB-75 16:1

\$1,265

EB-79 2:1

\$1,195

Endo NiTi Contra-Angle Handpieces



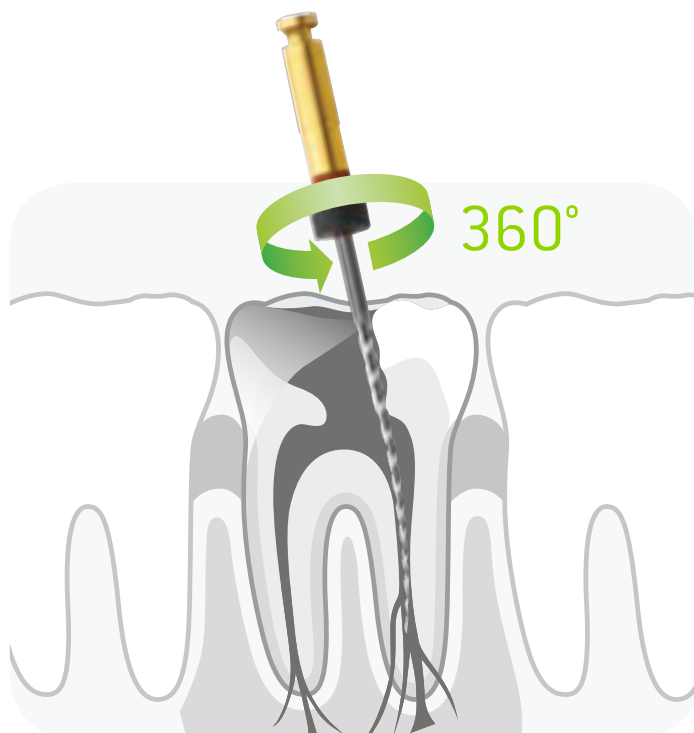
WD-73 M - 70:1

\$1,335

WD-74 M - 128:1

\$1,395

endea



Proxeo Contra-Angle for Screw-in cups and brushes



WP-64 MU 4:1

\$980

WP-64 M - 4:1

\$980

Proxeo Contra-Angle for Screw-in cups and brushes with 2.35mm shank



WP-66 M 4:1

\$980

Proxeo Straight Handpiece for disposable Contra-Angle Handpieces



HP-44 M 4:1

\$680

proxeo



Ask us
how to
save up
to 21%!

Ask us
for a
handpiece
trial or
demo!

Complete Digital Mobile System

Just
add Gas
Cylinders

Individual
parts also
available

Accutron Digital Ultra Complete System on Mobile Stand

Includes:

- 51975 Digital Ultra Flowmeter
- 43003 Clearview Scavenging Circuit*
- 33035 Clearview Adult Disposable Hoods 12*
- 33037 Clearview Peds Disposable Hoods 12*
- 2045 Mobile 3 Cylinder Stand
- 8063 Oxygen Connection Hose Set
- 8064 Nitrous Oxide Connection Hose Set
- Overall Height of System = 1090mm



\$7,920

AC.51975M

OPTIONAL

Set Regulators for Gas Cylinders:

- 1 x AC.OTR400S1 Medical Oxygen Regulator
- 1 x AC.OTR500S1 Medical N₂O Regulator

\$865

Complete Analog Mobile System

Complete Nitrous Oxide
Sedation System financed
from as little as \$3 per day

Accutron PC% Ultra Complete System on Mobile Stand

Includes:

- 31975 PC% Ultra Flowmeter
- 43003 Clearview Scavenging Circuit*
- 33035 Clearview Adult Disposable Hoods 12*
- 33037 Clearview Peds Disposable Hoods 12*
- 2045 Mobile 3 Cylinder Stand
- 8063 Oxygen Connection Hose Set
- 8064 Nitrous Oxide Connection Hose Set
- Overall Height of System = 1090mm



\$6,820

AC.3195M

SEE P.26 IN
CONSUMABLES
SECTION FOR
NITROUS OXIDE
SEDATION
CONSUMABLES

OPTIONAL

Set Regulators for Gas Cylinders:

- 1 x AC.OTR400S1 Medical Oxygen Regulator
- 1 x AC.OTR500S1 Medical N₂O Regulator

\$865

* Accutron Flowmeter system sets with included Scavenging Circuit can be supplied with PIP+ system with autoclavable hood in place of Clearview II Circuit with Single Use Double Hoods - please specify at time of order.

Implantmed SI-923

- Ideal for removing Wisdom Teeth and Implantology
- Automatic thread-cutter function!



**MORE
THAN 65%
OFF!**

NOW \$2,250*

WH-SI-923 (3028600)

NOW \$5,500*

KIT: WH-SI-923/k (90000161)

SEE P.25 IN
CONSUMABLES
SECTION FOR
SURGICAL
IMPLANT
CONSUMABLES

Elcomed

DOCTOR'S NO.1 CHOICE FOR
THE OPERATING THEATRE!

- Doctor's No.1 choice for the Operating Theatre!
- Shortest and lightest 50,000 rpm motor on the market
- Motor speed of 300 - 50,000 rpm
- Up to 80 Ncm on the rotary instrument
- Automatic thread cutter function



**FINANCE
AVAILABLE
ON SURGICAL
CONSOLES**
From \$1 per day
or \$7 per week.

WITHOUT DATA LOGGING

NOW \$8,750*

WH-SA-310 (15933102)
1.8m cable

NOW \$9,250*

SA-310-3.5 (15933103)
3.5m cable

WITH DATA LOGGING

NOW \$9,250*

SA-310-D (15933100)
1.8m cable

NOW \$9,750*

SA-310-D3.5 (15933101)
3.5m cable

Surgical Straight

S-11 1:1 RATIO



S-11 LG - \$2,250 (30057000)

**RRP S-11 (30056000)
\$1,350***

S-15 1:1 RATIO (LONG)



**RRP S-15 (30060000)
\$1,650***

Surgical Contra-angles

**S-12 1:2
TRANSMISSION**



**RRP S-12 (30061000)
\$2,150***

S-9 1:1 RATIO



S-9 LG - \$2,350 (30054000)

**RRP S-9 (30053000)
\$1,800***

WS-56 1:1



WS-56 LG - \$2,000 (30039000)

**RRP WS-56 (30038000)
\$1,650***

Surgical Contra Angle with 45° head

**WS-91 20:1
TRANSMISSION**



WS-91 LG - \$2,100 (30048000)

**RRP WS-91 (30047000)
\$1,675***

Implantology Handpiece

**WI-75 E/KM RATIO
20:1 IMPLANTOLOGY**



**RRP WI-75 E/KM (10207550)
\$1,400***

WS-92 1:2.7



WS-92 LG - \$2,100 (30042000)

**RRP WS-92 (30041000)
\$1,675***

**Ask us
about Nitrous
Oxide Sedation
Systems & RA
Units**

Implantmed SI-1023

W&H

- Assess implant stability
- Automatic thread-cutter function
- Glass Touchscreen
- Redesigned coolant pump for ease of use
- 6.2 Ncm motor torque & speeds of 200-40,000 rpm
- Shortest surgical motor on the market
- Wireless foot control
- Can be customised & retrofit added features

Cable Foot Control, No Light

NOW \$5,900*

WH-90000163 (90000163)

Cable Foot Control, With Light

NOW \$7,150*

WH-90000165 (90000165)

Wireless Foot Control, No Light

NOW \$6,750*

WH-90000164 (90000164)

Wireless Foot Control, With Light

NOW \$7,900*

WH-90000166 (90000166)

**NEW
REDUCED
PRICES!**



Surgical Straight

S-11 L 1:1 RATIO



30058000

RRP \$1,950*

Surgical Contra Angles

WS-75L 20:1



30033000

RRP \$2,000*

WS-56L 1:1



30040000

RRP \$1,850*

WS-92L 1:27



30043000

RRP \$2,000*

WS-91L 1:27



30049000

RRP \$2,000*

Electric Motors

EM-19 + 1.8m Cable



30185000

RRP \$2,500*

EM-19LC + 1.8m Cable



30281000

RRP \$3,500*

EM-19LC + 3.5m Cable



30281001

RRP \$3,750*

Osstell ISQ Module

Optional with Implantmed SI-1023

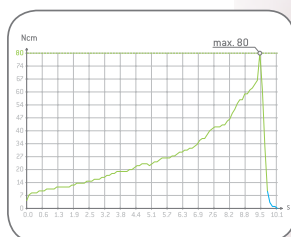
FOR A STABLE IMPLANT

NOW \$4,750*

WH-30210000 (30210000)



Stress-free healing



Secure placement



Measurable stability

Sterilisation: Ultrasonic Cleaners

Biosonic UC125 4.8L

- LCD Screen/Digital Timer
- Quiet operation
- Drains in 45 seconds
- 3.8L capacity
- Degas function
- 2 years warranty



\$1,787

UC125

**VALIDATE YOUR
ULTRASONIC CLEANER
DAILY:**

**Wash Monitor/Checks
(503865200)**

**Wash Monitor Holders
(503864800)**

Biosonic UC150 5.7L

- Glove-friendly touch screen display
- Data-logging capability – USB
- Fits multiple cassettes at once
- Heater function
- Quiet operation
- 5.7L capacity
- 2 years warranty



\$1,944

UC150

Biosonic UC300 11.4L

- Multiple basket arrangements
- Adjustable basket dividers for sorting instruments
- Racks to accommodate popular cassette systems
- Unique hinge action cover
- Quiet operation
- 11.4L capacity
- 2 years warranty



Call For Price

UC300

Soniclean 160TD 3.0L

- Selectable power levels
- Lid interlock enable/disable function
- Safety alarms
- Maximum efficiency independent of water levels
- 12 months warranty



\$1,307

160TD

Miele PG8581

Miele

MIELE PG8581 PD W

- **Miele PG8581** unit with white door
- **Front door dosage pump** (tablet dispenser)
- **approx. cycle time 42mins**
- **EcoDry** – door automatically opens when cycle finished

\$10,870

PG8581 PD W

FINANCE AVAILABLE
From \$3 per day
or \$26 per week.



PG8581 PD SS

- **Miele PG8581** unit with stainless steel door
- **Front door and rear integrated dosage pump** (for automatic dosage with bulk chemicals supply)
- **Approx cycle time 42mins**
- **EcoDry** – door automatically opens when cycle finished



\$14,344

PG8581 PD SS

MIELE PG8581 W STARTER PACK

- **PG8581 PD W** white, 60cm, door dispenser for powder detergent, 1 integrated liquid dispenser pump
- **A102 Upper Basket** for PG85XX series
- **A151 Lower Basket** for PG85XX series
- **E379** Half mesh tray
- **E337/1 2/5** Insert for instruments (upright)
- **E523** Half Insert for Hu-Friedy cassettes
- **Dual Check Valve**

\$13,995

PG8581 W Starter Pack

Miele PG8591

Miele



**FINANCE
AVAILABLE**
From \$6 per day
or \$45 per
week.

PG8591 PD SS

- **Miele PG8591** unit with stainless steel door
- **Front door and rear** integrated dosage pump (for automatic dosage with bulk chemicals supply)
- **Approx cycle time 40 mins**
- **DryPlus** – fan-forced drying of instruments at end of cycle



\$16,266

PG8591 PD SS

PG8591 PD SS STARTER PACK

- **PG8591 AD SS** stainless steel, 60cm, 1 integrated liquid dispenser pumps, demin water connection, integrated hot-air drying
- **A102 Upper Basket** for PG85XX series
- **A151 Lower Basket** for PG85XX series
- **E379** Half mesh tray
- **E337/1 2/5** Insert for instruments (upright)
- **E523** Half Insert for Hu-Friedy cassettes
- **Dual Check Valve**
- **Chemical Asepti MultiZyme, 5lt** Liquid

\$19,469

PG8591 PD SS Starter Pack

Water Filtration Systems

RO Tek Reverse Osmosis Unit



\$1,295*

OASIS-LAB-180

AquaClave® RO P5 Unit



\$1,685*

WP5007

W&H Reverse Osmosis



\$2,245*

WH-LISAOSMO

W&H Multidem



\$1,040*

WH-19723112

LISA VA Traceability

LisaSafe: No room for error

The traceability of your sterilisation protocol is becoming an ever-increasing requirement to ensure patient safety and to legally protect your practice. For this reason, W&H has innovated by developing LisaSafe, a comprehensive traceability concept that reduces unnecessary handling and avoids the risk of error.

Making the link

The aim of a traceability system is to link a medical device and a sterilisation cycle to the patient. To achieve this, sterilised loads need to be labelled with the following information:

- Steriliser serial number
- Cycle or number
- Sterilisation date
- Load expiry date

LisaSafe Consumables Kit

\$2,315*

WH-LISASAFE/VA/K
(includes 1 Consumables Kit)

\$170.50*

WH-A8105000



LISA VA Accessories

D-Link Dual Band USB Adaptor



\$215.50*

WH-DONGLE

Lisa Bag Sealer



\$1,395*

WH-19722101

Helix Test Kit 250 strips



\$238*

EU-242005

Lisa Auto 800 Cycle Consumable Kit



\$278*

WH-X050315X

Sprint Thermal Printer



\$1,215*

WH-19721108

NEW Lisa VA

The NEW Lisa VA Steriliser provides:

- fastest sterilisation cycle times
- easy to use with new touch screen and customisable menus
- ipad connectivity and secure traceability
- increased performance and robust reliability

Lisa VA 17L, WH-LISA17VA

RRP \$13,995*

Lisa VA 22L, WH-LISA22VA

RRP \$14,995*

*Not valid with any other discounts or offers



**LISA Sterilisers
financed from
as little as
\$6 per day**

**SEE P.22 IN
CONSUMABLES
SECTION FOR
MORE LISA
STERILISATION
CONSUMABLES**

Complete W&H Sterilisation Package

D-LINK Dual Band USB Adaptor
WH-DONGLE



LISA Traceability
WH-LISASAFE/VA/K



LISA Bag Sealer
WH-19722101



Helix Test
EU-242005



Multi Dem
C27: WH-19723112



LISA VA 17L Package Special:

RRP \$15,933

LISA VA 22L Package Special:

RRP \$16,783

*Trade-in offer not valid in conjunction with
FREE Lisasafe offer or any other offers.

AC 200 – Two Cylinder Compressor

Recommended for 2-3 surgeries



\$7,648

K-AC2000

AC 200 – with dryer pre filter for humid climates

Fitted with pre-filter moisture trap with auto-drain that removes a percentage of moisture prior to air reaching the drying column.

\$8,286

K-AC200E

AC 200Q – Quiet Two Cylinder Compressor

Recommended for 2-3 surgeries



\$10,678

K-AC200Q

AC 200Q – with dryer pre filter for humid climates

Fitted with pre-filter moisture trap with auto-drain that removes a percentage of moisture prior to air reaching the drying column.

\$11,146

K-AC200Q-E

AC 300 – Three Cylinder Compressor

Recommended for 3-4 surgeries



\$9,347

K-AC3000

AC 300 – with dryer pre filter for humid climates

Fitted with pre-filter moisture trap with auto-drain that removes a percentage of moisture prior to air reaching the drying column.

\$10,095

K-AC300E

AC 300Q – Quiet Three Cylinder Compressor

Recommended for 3-4 surgeries



\$12,164

K-AC300Q

AC 300Q – with dryer pre filter for humid climates

Fitted with pre-filter moisture trap with auto-drain that removes a percentage of moisture prior to air reaching the drying column.

\$12,632

K-AC300Q-E

Compressor+Suction Motor financed
from as little as \$6 per day

AC 310-CAD CAM – Three Cylinder Compressor

Recommended for 2-3 surgeries plus CAD CAM



\$10,560

K-AC310

AC 310Q-CAD CAM – Three Cylinder Compressor

Recommended for 2-3 surgeries plus CAD CAM



\$12,029

K-AC310Q

AC 400 – Tandom Two Cylinder Compressor

Recommended for 5-6 surgeries



\$14,004

K-AC4000/K-AC4001-P

AC 400 – with dryer pre filter for humid climates

Fitted with pre-filter moisture trap with auto-drain that removes a percentage of moisture prior to air reaching the drying column.

\$14,938

K-AC400E/K-AC4001-PE

AC 400Q – Quiet Tandom Two Cylinder Compressor

Recommended for 5-6 surgeries



\$18,672

K-AC400Q/K-AC400Q-1P

AC 400Q – with dryer pre filter for humid climates

Fitted with pre-filter moisture trap with auto-drain that removes a percentage of moisture prior to air reaching the drying column.

\$19,606

K-AC400Q-E/K-AC400Q-1PE

3 YEARS
WARRANTY

Micro SMART with ISO 18 Hydrocyclone

Recommended for 1-2 surgeries



\$7,467

CMH-0000

Turbo SMART A with ISO 18 Hydrocyclone

Recommended for 2 Surgeries



\$10,036

C-1A0000

Turbo SMART B with ISO 18 Hydrocyclone

Recommended for 4 Surgeries

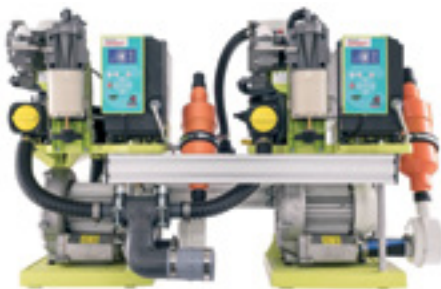


\$11,326

C-2A0000

Tandem Micro SMART with ISO 6 Hydrocyclone

Recommended for 4 Surgeries



\$16,830

C-MHTM00

Tandem Turbo SMART A with ISO 18 Hydrocyclone

Recommended for 5 Surgeries (can be upgraded to 2 x 4 surgery units. See accessories page for details.)



\$22,699

C-1ATM00

Password - Upgrade Turbo SMART A to Turbo SMART B

- Simply installed by entering via the unit's keypad
- Requirements for order:
Serial Number - found on I.D. label on chassis • ISO 11143 Compliant
Generated Code - found on label on control panel

\$2,217

C-P00000

MicroSMART Cube



\$8,255

C-4A0000



Micro SMART Cube with ISO 6 Hydrocyclone

Recommended for 1-2 Surgeries

Fitted with ISO 6 Hydrocyclone

Amalgam Retention:

- ISO 11143 Compliant
- Max Flow = 5.5 l/min
- Min Flow = 0.5 l/min

Inverter control

Max. flow: 916 l/min

Max. vacuum for continuous duty = 210 mBar

Sound: 52 dB(A)

Power: 5.8A, 0.9 kW

Dimensions: H470 x W420 x D360 mm

Net weight: 23 kg

Acoustic Housing

The clever housing is designed with a cooling system to allow maximum air flow around the unit.

- Simple design
- Noise reduction of over 19 dB
- Three easily removable panels for easy servicing & maintenance

TurboSMART Cube



Turbo SMART A Cube

\$9,919

C-1C000

Turbo SMART B Cube

\$11,204

C-2C000

Turbo SMART Cube with ISO 18 Hydrocyclone

Recommended for 2-3 Surgeries

Fitted with ISO 18 Hydrocyclone

Amalgam Retention:

- ISO 11143 Compliant
- Max Flow = 18 l/min
- Min Flow = 0.5 l/min

Inverter control

Max. flow: 1,600 l/min

Max. vacuum for continuous duty = 210 mBar

Sound: 58.4 dB(A)

Power: 4.8A, 1.1 kW

Dimensions: H650 x W500 x D370 mm

Net weight: 43 kg

A NEW ALL IN ONE waterproof glass keyboard – great for infection control

The new medical waterproof keyboard for all health professionals

- 3 modes of connectivity available – USB, RF and Bluetooth.
- Connect to PCs, tablets and smartphones.
- Keyboard supports Android, Windows and MAC OSX
- The numeric key pad can be switched to mouse pad mode.
- Keypad buttons have adjustable volume and vibration control
- Tempered glass surface is easily wiped over and cleaned

The Robert-Koch Institute states:

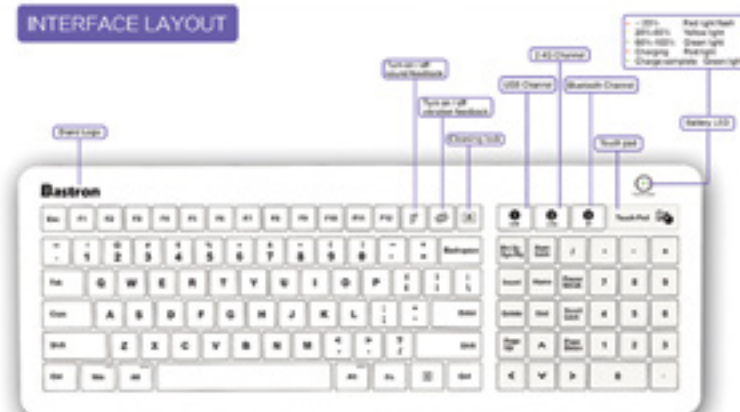
“Because of their mechanical construction, conventional keyboards cannot be disinfected.”

And recommends:

Keyboards with “smooth, liquid-proof and disinfectible surfaces” are recommended for hospitals and doctor’s offices.



INTERFACE LAYOUT



MULTI CONNECTION FUNCTION

With one MultiDevice connector USB, RF, Bluetooth



\$250

ICONA-KEYS



Perfecta 300

- Motor handpiece 5.5Ncm, 1,000 – 40,000 rpm
- Automatic: bistable mode
- Forward/Reverse mode
- Optional Table control, Knee Control or Foot Control

| | | |
|-------------------------------------|--------------|----------------|
| Foot Control Unit with E-Type motor | WH-LA-323 FE | \$2,265 |
| Foot Control Unit | WH-LA-323 F | \$2,995 |
| Knee Control Unit | WH-LA-323 K | \$3,460 |
| Table Control Unit | WH-LA-323 T | \$3,460 |

Perfecta 600

- Motor handpiece 7.5 Ncm, 1,000 – 50,000 rpm
- Automatic: bistable/speed control operation
- Forward/Reverse mode
- Optional Table control, Knee Control or Foot Control

| | | |
|----------------------------|--------------|----------------|
| Foot Control Unit | WH-LA-623 F | \$4,050 |
| Knee Control Unit | WH-LA-623 K | \$4,515 |
| Table Control Unit | WH-LA-623 T | \$4,515 |
| Knee Activated (with tank) | WH-LA-923 KT | \$5,180 |
| Knee Activated | WH-LA-923 K | \$5,180 |
| Table Control Unit | WH-LA-923 T | \$5,180 |
| Table Control (with tank) | WH-LA-923 TT | \$5,180 |

Perfecta Consumables & Accessories

| | | |
|--|-------------|-----------------|
| Motor Cable 1.8m for Motor H/P LA-66 | WH-05116500 | \$348.00 |
| Motor Cable 1.8m for Perfecta 300 | WH-05114900 | \$295.00 |
| Motor Cable 1.8m for LA-9 for High Speed Handpiece | WH-05117800 | \$482.00 |

Perfecta Consumables & Accessories



Handpiece Holder
WH-0321150



High Speed H/P LA-9
WH-LA-9



Foot Operated Starter LN-V
WH-05038100



Operating Controls LA-3D
WH-05127000



Wall Bracket for Operating Controls
WH-05138000



Motor E-type with Cable
WH-05138800



Motor H/P without Cable LA-66
WH-05201200



Operating Controls LA-9D
WH-05243400



Milling Device Adaptor
WH-06319400



Technical Handpiece 945
WH-14124500

Power Vibrator

- Designed for easy pouring of plaster
- Prevents blisters by minute vibration
- Easy detachability of rubber sheet vibration table
- Variable vibration control

12 Months Warranty

QUALITY KOREAN PRODUCT WITH 12 MONTH WARRANTY



FROM \$465

080030

Lathe

- Polish and grind metals and resins - dry or wet
- Safety switch to prevent accidental start-up after power failures, thus removing any risk of injury.
- 'Lever' type extractors for simpler brush-holder removal.
- Robust, heavy construction with wide base on non-slip rubber feet for maximum stability and steadiness.



FROM \$1,017

M-080162

Plaster Separator

- With sealed 4-chamber clarification system
- No unpleasant odours
- No spillage
- Easy to clean



12 Months Warranty

FROM \$470

080087

Sand Blaster

- Precise blasting with the special mixing chamber technology
- Can be extended to 2 tanks without the use of tools.
- Increased efficiency with tank selection switch inside the blasting chamber.



FROM \$2,556

080262

Model Trimmers

Powerful RH3 Model Trimmer with Diamond Wheel - RPM 3000



FROM \$2,551

M-080083

Powerful RH3 Model Trimmer with Silicon Carbide Wheel - RPM 3000



FROM \$1,690

M-080082

Micro-Etcher IIA



FROM \$675

DAN65-050

Erio Lab Desk – Sole 1 & Sole 2

Single-place and two-place workstations with height adjustment from a minimum of 86cm (from the floor to the worktop) to a maximum of 100cm.

They are supplied with two drawers with plastic trays for each workstation and with a service drawer unit with three drawers, one with lock.

The gas system, the air gun, the micromotor housing and four electric sockets (six on the two-place table) are always provided.

The worktop is made of plastic laminate. They can be supplied with accessories on request.



From \$5,445

SOLE1

Dimensions: 1100mm x 50mm x 600mm



From \$8,745

SOLE2

Dimensions: 1720mm x 50mm x 600mm



Thermoforming Units

The Machine III Vacuum Former

- 125mm x 125mm
- Square Dental Vacuum Thermoforming machine



125mm

From \$1,005

EQPF100

AI dente Dunaform

Dunaform is a no-nonsense, reliable pressure forming unit

- Programmable keypad
- Halogen Heating Element
- Ideal for laminating
- 0.1mm to 5mm thickness
- Pressure adjustable to 6 bar
- Made in Germany



120mm

Please call for latest pricing

Pro Form Machine III

- The world's #1 seller
- Precision vacuum former
- Free vacuum forming DVD on request
- Made in USA



127mm

Please call for latest pricing

Puts Dentistry into Focus!

- High Quality
- Clear Image
- Clarity
- Large Range
- Modern Design

New Models!



How to Choose Quality Loupes

The best method to evaluate loupes is to look at an object with straight black lines, as above Figure A. The most common signs of poor quality loupes are low resolution, chromatic aberration and spherical aberration.

Chromatic aberration refers to color distortion. Because each color has a different wavelength, uncorrected optics cause the various wavelengths to focus at different points in space. The first color that generally comes out of focus is blue; when looking at black lines on white paper, poor quality loupes will display a blue haze just to the side of the black lines, as depicted in Figure B. Spherical aberration is stated to be the flatness of the image.



When viewed through loupes, an object that exhibits spherical aberrations would appear to be curved or spherical, as depicted in Figure B. The lines would not be straight as they should be, as in the original (Fig. A) or as a Gritter loupe image example like Figure C.

A simple piece of graph paper, can best reveal the difference between mediocre and high quality loupes, better than complex objects like models. Other important considerations are light transmission, depth of field and field of view.

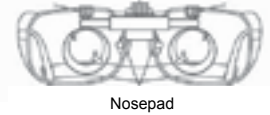
Light transmission is important not only for quality of the image, but also for the comfort and safety of your patients. Optimised light transmission means that you can work with less light, reducing your eyestrain while minimizing the exposure of your patient to bright light.

Depth of field is defined as the range that's in focus away from and towards you without moving your head. The ergonomic benefits, or how comfortable the loupes are to wear, of a large depth of field are clear because there is less need to move your back and neck to work effectively.

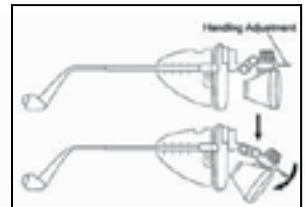
Field of view refers to the amount of the original object that you can see at one time. Different applications have different needs. A bigger field of view is not always the better choice; for instance, an endodontist might prefer to see only the area of focus, whereas a periodontist would like to see as much of the surrounding area as possible.

How to Adjust and Wear Loupes

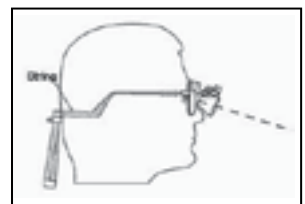
Interpupillary Adjustment



Interpupillary Adjustment. This adjustment is controlled by turning the interpupillary adjustment knob back and forth, until the image converges into a circle.






Adjust the hinge mechanism so that the optics are angled approximately 30 to 45 degrees below a horizontal line. This will allow for the user to look down into the optics while working, keeping an upright posture.





Most loupes have a preset working distance. Be sure to position yourself back and forth to find the optimal distance for your focusing. Adjust the head-band to wear them comfortably.

2.5x Galilean Loupes - Titanium Sports Frames

| | Code | Product | Features | List Price |
|--|-----------|---------------------|---|------------------------|
|  | TA.25P2-S | 2.5x Galilean 340mm | 2.5x Galilean Loupes - 380mm Working Distance - 60-80mm Depth of View - 120mm Field of View - Weight 50 grams <i>With titanium Sports frames .</i> | \$ 620+GST = \$ 682.00 |
|  | TA.25P2-M | 2.5x Galilean 420mm | 2.5x Galilean Loupes - 460mm Working Distance - 60-80mm Depth of View - 120mm Field of View - Weight 50 grams <i>With titanium Sports frames .</i> | \$ 620+GST = \$ 682.00 |
|  | TA.25P2-L | 2.5x Galilean 540mm | 2.5x Galilean Loupes - 550mm Working Distance - 60-80mm Depth of View - 120mm Field of View - Weight 50 grams <i>With titanium Sports frames .</i> | \$ 620+GST = \$ 682.00 |




3.0x Galilean Loupes - Titanium Sports Frames

| | Code | Product | Features | List Price |
|---|-----------|---------------------|--|------------------------|
|  | TA.30P2-S | 3.0x Galilean 340mm | 3.0x Galilean Loupes - 380mm Working Distance - 60-80mm Depth of View - 90mm Field of View - Weight 50 grams <i>With titanium Sports frames .</i> | \$ 620+GST = \$ 682.00 |
|  | TA.30P2-M | 3.0x Galilean 420mm | 3.0x Galilean Loupes - 460mm Working Distance - 60-80mm Depth of View - 90mm Field of View - Weight 50 grams <i>With titanium Sports frames .</i> | \$ 620+GST = \$ 682.00 |
|  | TA.30P2-L | 3.0x Galilean 540mm | 3.0x Galilean Loupes - 550mm Working Distance - 60-80mm Depth of View - 90mm Field of View - Weight 50 grams <i>With titanium Sports frames .</i> | \$ 620+GST = \$ 682.00 |





Need to Add your Prescription for the Frames to suit your personal needs ?

Simply add the TA.PFA Lens Addition to the Loupes, which can be taken to any Optometrist to add your Prescription Lens See page 51, Accessories



3.5x Galilean Loupes - Titanium Sports Frames

| | Code | Product | Features | List Price |
|---|-----------|---------------|--|------------------------|
|  | TA.25P2-S | 3.5x Galilean | 3.5x Galilean Loupes - 380mm Working Distance - 80mm Depth of View - 120mm Field of View - Weight 50 grams <i>With titanium Sports frames .</i> | \$ 620+GST = \$ 682.00 |
|  | TA.30P2-M | 3.5x Galilean | 3.5x Galilean Loupes - 460mm Working Distance - 80mm Depth of View - 90mm Field of View - Weight 50 grams <i>With titanium Sports frames .</i> | \$ 620+GST = \$ 682.00 |
|  | TA.35P2-L | 3.5x Galilean | 3.5x Galilean Loupes - 550mm Working Distance - 80mm Depth of View - 80mm Field of View - Weight 50 grams <i>With titanium Sports frames .</i> | \$ 630+GST = \$ 693.00 |



Galilean Loupes - Clip On

| | Code | Product | Features | List Price |
|--|------------|---------------------|--|------------------------|
|  | NG.250R/CL | 2.5x Galilean 420mm | 2.5x Galilean Loupes - 420mm Working Distance - 90mm Depth of View - 100mm Field of View - Weight 50 grams <i>With clip on attachment to fit existing full frame eyeglasses.</i> | \$ 440+GST = \$ 484.00 |
|  | NG.250L/CL | 2.5x Galilean 500mm | 2.5x Galilean Loupes - 500mm Working Distance - 100mm Depth of View - 110mm Field of View - Weight 50 grams <i>With clip on attachment to fit existing full frame eyeglasses.</i> | \$ 440+GST = \$ 484.00 |
|  | NG.300R/CL | 3.0x Galilean 420mm | 3.0x Galilean Loupes - 420mm Working Distance - 80mm Depth of View - 65mm Field of View - Weight 50 grams <i>With clip on attachment to fit existing full frame eyeglasses.</i> | \$ 440+GST = \$ 484.00 |
|  | NG.300L/CL | 3.0x Galilean 500mm | 3.0x Galilean Loupes - 500mm Working Distance - 90mm Depth of View - 70mm Field of View - Weight 50 grams <i>With clip on attachment to fit existing full frame eyeglasses.</i> | \$ 440+GST = \$ 484.00 |

N31 Long Work Distance - Titanium Sports Frames

| | Code | Product | Features | List Price |
|---|----------|-------------------|---|------------------------|
|  | TA.25N31 | 2.5x N31 Galilean | 2.5x N31 Loupes - 300-580mm Working Distance - Variable Depth of View - 125mm Field of View - Weight 40 grams <i>With titanium Sports frames .</i> | \$ 630+GST = \$ 693.00 |
|  | TA.33N31 | 3.3x N31 Galilean | 3.3x N31 Loupes - 300-580mm Working Distance - Variable Depth of View - 125mm Field of View - Weight 40 grams <i>With titanium Sports frames .</i> | \$ 630+GST = \$ 693.00 |


Z Series Adjustable Magnification - Titanium Sports Frames

| | Code | Product | Features | List Price |
|---|--------|----------------------|---|------------------------|
|  | TA.Z10 | 2.5x-3.0x Adjustable | 2.5x-3.0x Adjustable Loupes - 360-480mm Working Distance - 100mm Depth of View - 120mm Field of View - Weight 1000 grams <i>With titanium Sports frames .</i> | \$ 720+GST = \$ 793.00 |
|  | TA.Z11 | 3.0x-3.5x Adjustable | 3.0x-3.05x Adjustable Loupes - 270-500mm Working Distance - 100mm Depth of View - 120mm Field of View - Weight 1000 grams <i>With titanium Sports frames .</i> | \$ 720+GST = \$ 793.00 |


Need to Add your Prescription for the Frames to suit your personal needs ?

Simply add the TA.PFA Lens Addition to the Loupes, which can be taken to any Optometrist to add your Prescription Lens See page 51, Accessories

LED Headlight

| | Code | Product | Features | List Price |
|---|--------|---------------|--|------------------------|
|  | TA.LED | LED Headlight | <p><i>Designed for use with all Framed brand Galilean Loupes. Can also be adapted for use with other brand loupes.</i></p> <ul style="list-style-type: none"> - Light Spot size 50cm @ 150cm - Head Light Weight 10grams - Light Source 3.0w LED - Colour Temperature 6,400K - LED lifespan ~30,000 hours - Fully variable intensity 15,000-30,000 lux - Battery Type Li-Ion 7.4v - Battery run time At Maximum setting 3 hours - Battery weight 113grams <p>Two batteries Included</p> | \$ 900+GST = \$ 990.00 |

LED Headlight + Loupes Set

| | Code | Product | Features | List Price |
|--|------------|------------------------------------|--|----------------------------|
|  | TA.LED-G | LED Headlight +2.5 Galilean Loupes | <p>Combines the Sports Frame 2.5x Galilean Loupes with LED headlight set.</p> <p><i>Specify 340mm, 420mm or 500mm working distance</i></p> | \$ 1,350+GST = \$ 1,485.00 |
| | TA.LED-N31 | LED Headlight +N31 Galilean Loupes | <p>Combines the Sports Frame N31 Galilean Loupes with LED headlight set.</p> <p><i>Specify 2.5x or 3.3x Magnification</i></p> | \$ 1,350+GST = \$ 1,485.00 |

Accessories

| | Code | Product | Features | List Price |
|--|---------|----------------------------|--|------------------------|
| | TA.PFA | Prescription Lens Addition | Add on Lens Addition to the Loupes, which can be taken to any Optometrist to Prescription Lens | \$ 80+GST = \$ 88.00 |
| | TA.NSP | Standard Frames Ergonomic | <p>Replacement Standard Frames Ergonomic Design—Titanium Construction Recommended for use with Prescription lenses.</p> <p><i>Can be exchanged in place of Sports Frames on request.</i></p> | \$ 90+GST = \$ 99.00 |
| | TA.TR90 | Standard Frames Sports | Replacement Standard Frames Sports Design—Titanium Construction | \$ 90+GST = \$ 99.00 |
| | TA.BAND | Head Band | Replacement Elastic Head Band for Use with all Frame types | \$ 12+GST = \$ 13.20 |
| | TA.BATT | Replacement Battery | Replacement Battery for LED headlight Li-Ion 7.4v | \$ 260+GST = \$ 286.00 |